

What kind of inverter should I use outdoors





Overview

In fact, most grid-tied inverters are designed for outdoor use, although most off-grid inverters are not weatherproof and are generally mounted indoors, close to the battery bank. How to choose an outdoor solar inverter?

Outdoor solar inverters are exposed to various weather conditions, including rain, snow, hail, and extreme temperatures. Look for inverters with robust weatherproof enclosures and high IP (Ingress Protection) ratings to ensure durability and reliability in outdoor environments. 2. Ventilation and Cooling.

Can inverters be installed outside?

As a rule, inverters designed for outdoor use may be installed either outdoors or indoors, however indoor inverters can only be installed indoors. The great majority of grid-tied or string inverters available today are designed for outdoor installation.

Are solar inverters weatherproof?

They are generally weatherproof and built to withstand outdoor conditions. However, it is crucial to protect them from extreme weather and potential physical damage. Before we dive into the practicalities of installing a solar inverter outdoors, let's take a moment to understand this vital piece of hardware.

Why should you install an outdoor inverter?

Agricultural and Rural Settings: In agricultural or rural settings where outdoor space is abundant, outdoor installation offers a practical and cost-effective solution. Inverters can be mounted on poles, walls, or ground-mounted racks, optimizing space utilization and simplifying installation and maintenance.

Can a solar inverter be installed inside?

If you cannot install the solar inverter inside, we would look for an area close to the main switchboard that is not exposed to the elements.



Why should you install a solar inverter indoors?

By installing them indoors, they are kept away from the harsh outdoor environment, which includes freezing winters and scorching summers, particularly relevant in regions with significant seasonal variations. This controlled environment prevents weather-related wear and tear, thereby enhancing the inverter's longevity.



What kind of inverter should I use outdoors

APPLICATION SCENARIOS



[Can an inverter be installed outdoors?](#)

There are many inverters for PV systems that can be installed outdoors. In fact, most grid-tied inverters are designed for outdoor use, although most off-grid inverters are not weatherproof ...

[Product Information](#)

[Solar Inverters Can Be Installed in These Places Outdoors](#)

Outdoor solar inverters are exposed to various weather conditions, including rain, snow, hail, and extreme temperatures. Look for inverters with robust weatherproof enclosures ...

[Product Information](#)



[Does Your Travel Trailer Have an Inverter?](#)

An inverter is a critical piece of equipment for any travel trailer owner to have if they want to power appliances without using a generator or shore power station. Not every travel trailer comes ...

[Product Information](#)

Power inverter buying guide

Inverter/chargers designed for off-grid job sites and work trucks with limited access to shore power use batteries separate from a vehicle's main battery or outside the vehicle entirely.

[Product Information](#)



FLEXIBLE SETTING OF MULTIPLE WORKING MODES



What Size Inverter You Need (Calculations + Battery)

How To Calculate The Total Wattage Required To understand what size inverter you need, you need to know a few fundamental values. The first one is the total wattage of the ...

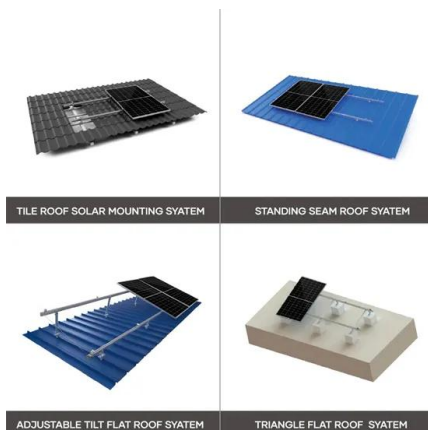
Product Information



Running LED TV on Inverter: What Power Inverter Do ...

By that, it is meant that you should not have too much trouble using this type of inverter for your TV set. The type of devices that would be ruined ...

Product Information



Can Solar Inverters be Installed Outside

In summary, solar inverters can be installed outside to maximize solar energy utilization, optimize space utilization, and provide good heat dissipation and ventilation conditions.

Product Information



[What Size Inverter Do I Need for Camping? \(Including ...](#)

Discover the perfect inverter size for your next camping adventure. Learn how to calculate your power needs, choose between pure and modified sine wave ...

[Product Information](#)



Find the Right Inverter Size: How Big An Inverter Do You need?

When it comes to powering your devices through an inverter, one of the most critical aspects to consider is size--how big an inverter do you need? Whether you're on an ...

[Product Information](#)

[What Makes a 1000 Watt Power Inverter the Perfect Power ...](#)

Explore why a 1000 watt power inverter is ideal for outdoor environments such as camping, mobile workstations, and off-grid setups. Learn how to choose the right model, what ...

[Product Information](#)



What Size Inverter Do I Need for Camping? (Including Examples)

Discover the perfect inverter size for your next camping adventure. Learn how to calculate your power needs, choose between pure and modified sine wave inverters, and explore practical ...

[Product Information](#)



Best Outdoor Rated Hybrid Inverter?

I'm looking for a NEMA3/IP65 or greater rated hybrid inverter, mounted outside to work with the EG4 LiFePower4 batteries. I do not want to backfeed the grid but still have the ...

[Product Information](#)



[Can my solar inverter be installed outside?](#)

Most inverters are rated at least IP56 which means they can technically be anywhere outside, and you will not usually void a the warranty of your solar inverter by installing it outside, totally ...

[Product Information](#)

Contact Us

For catalog requests, pricing, or partnerships, please visit:
<https://les-jardins-de-wasquehal.fr>