

What is the range of the communication base station inverter





Overview

Diversity techniques To improve the quality of the received signal, often two receiving antennas are used, placed at a distance equal to an odd multiple of a quarter of the corresponding wavelength. For 900 MHz, this wavelength is 33 cm. This technique, known as antenna diversity or space diversity, avoids interruption caused by path fading. The antennas can be spaced horizontally or vertically. Horizontal spacing requires more complex installation, but brings better results.



What is the range of the communication base station inverter



Detailed Analysis of Photovoltaic Inverter Communication ...

By analyzing the communication methods of various types of photovoltaic inverters, we can understand the characteristics of various inverters, which will help us when choosing ...

[Product Information](#)

Power Supply Solutions for Critical Communications , Samlex America

Samlex has the widest range of switching power supplies, power inverters, inverter/chargers and more to meet your critical communication application.

[Product Information](#)



Energy storage(KWh)

102.4kWh

Nominal voltage(Vdc)

512V

Outdoor All-in-one ESS cabinet



Base transceiver station

Diversity techniques To improve the quality of the received signal, often two receiving antennas are used, placed at a distance equal to an odd multiple of a quarter of the corresponding wavelength. For 900 MHz, this wavelength is 33 cm. This technique, known as antenna diversity or space diversity, avoids interruption caused by path fading. The antennas can be spaced horizontally or vertically. Horizontal spacing requires more complex installation, but brings better...

[Product Information](#)

[How Do Inverters Communicate -- EASUN POWER Official Store](#)

Inverters communicate through a variety of



methods to optimize energy management across different settings. This discussion explores the key communication ...

[Product Information](#)



[Choosing the Optimal Channels for Base Stations: A...](#)

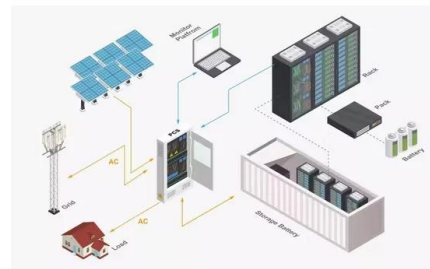
In the world of wireless communication, the choice of channels for base stations plays a critical role in ensuring reliable service, minimizing interference, and optimizing ...

[Product Information](#)

Communication base station solar energy 8kw specification ...

The main loads of those small base station are 48V with rated 500W power more or less, The new energy communication base station supply system is mainly used for those small base ...

[Product Information](#)



[Communication Base Station Inverter Application](#)

Base station type: Power requirements for small base stations typically range from a few hundred watts to several kilowatts. Larger base stations or those that support more ...

[Product Information](#)



solar power for Base station

The solar power for base station solution provides an economical and efficient energy solution for communication base stations, reducing operating costs, emissions, and improving energy ...

[Product Information](#)



Best CB Radio Base Station for 2024: Long-Range Solutions for ...

Discover the best CB radio base stations for 2024, featuring reliable long-range communication and advanced features for enthusiasts. Explore top models today!

[Product Information](#)



What is the range of a typical communication base ...

The surrounding environment, including urban or rural areas, can impact the range of a base station. The typical range of a base station can be from a few ...

[Product Information](#)



The Future of Hybrid Inverters in 5G Communication Base Stations

Conclusion: As 5G networks expand, hybrid inverters will play a pivotal role in powering next-gen base stations--providing stable, cost-effective, and green energy solutions ...

[Product Information](#)



What Is Base Station in Mobile Communication? - The Heart of ...

At the heart of this system lies the base station, a crucial component that enables seamless communication between mobile devices and the network. In this blog post, we will ...

[Product Information](#)



[What is the range of a typical communication base station](#)

The surrounding environment, including urban or rural areas, can impact the range of a base station. The typical range of a base station can be from a few hundred meters to several ...

[Product Information](#)



[Communication Base Station Energy Solutions](#)

For base stations located in deserts or other extreme environments, independent power supply is essential, as these areas are not only beyond the reach of power grids but also unsuitable for ...

[Product Information](#)



Telecommunication

This range varies greatly depending on the type of integrated energy sources and the AC loads. Therefore the determination of an optimum based on the overall energy requirement and the ...

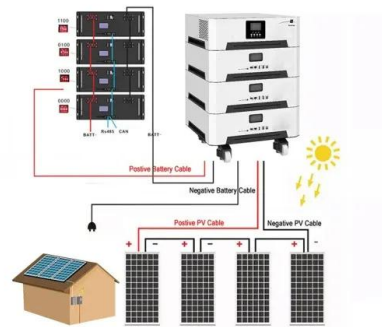
[Product Information](#)



[Communication Power Inverter Base Station Inverter](#)

These telecom-grade inverters provide pure ac sine-wave power for all critical network needs. we offer a wide range of inverters and converters in different capacities to integrate with DC ...

[Product Information](#)



The Future of Hybrid Inverters in 5G Communication Base Stations

Modern hybrid inverter systems support remote diagnostics and real-time energy monitoring, aligning perfectly with the needs of decentralized telecom networks. This means ...

[Product Information](#)

[Communication Base Station Smart Hybrid PV Power Supply ...](#)

The system is mainly used for the Grid-PV Hybrid solution in telecom base stations and machine rooms, as well as off-grid PV base stations, Wind-PV hybrid power base stations and Diesel ...

[Product Information](#)



Power Base Station

Base station power refers to the output power level of base stations, which is defined by specific maximum limits (24 dBm for Local Area base stations and 20 dBm for Home base stations) ...

[Product Information](#)



Contact Us

For catalog requests, pricing, or partnerships, please visit:
<https://les-jardins-de-wasquehal.fr>