

What is the proportion of base station communication equipment





Overview

How do base stations work?

Base stations use antennas mounted on cell towers to send and receive radio signals to and from mobile devices within their coverage area. This communication enables users to make voice calls, send texts, and access data services, connecting them to the wider world. Network Management and Optimization.

What is a base station in telecommunications?

In telecommunications, a base station is a fixed transceiver that is the main communication point for one or more wireless mobile client devices. A base station serves as a central connection point for a wireless device to communicate.

What is a signal transmission & reception base station?

Signal Transmission and Reception Base stations use antennas mounted on cell towers to send and receive radio signals to and from mobile devices within their coverage area. This communication enables users to make voice calls, send texts, and access data services, connecting them to the wider world.

How does a base station communicate with a client device?

Generally, if client devices wanted to communicate to each other, they would communicate both directly with the base station and do so by routing all traffic through it for transmission to another device. Base stations in cellular telephone networks are more commonly referred to as cell towers.

Is a base station a transmitter or broadcast point?

Base stations are generally a transceiver, capable of sending and receiving wireless signals; otherwise, if they only transmitted signals out, they would be considered a transmitter or broadcast point. A base station will have one or



more radio frequency (RF) antennas to transmit and receive RF signals to other devices.

What is a mobile communication base station?

Mobile communication base station is a form of radio station, which refers to a radio transceiver station that transmits information between mobile phone terminals through a mobile communication exchange center in a certain radio coverage area.



What is the proportion of base station communication equipment



What Is the Role of a Base Station in Wireless Communication?

Introduction to Base Stations in Wireless Communication Base stations are critical components in wireless communication networks, serving as the intermediary between mobile ...

[Product Information](#)

[The Base Station in Wireless Communications: The Key to ...](#)

A typical base station has three sectors, which allows for signal coverage of the area around the station. Several dozen or several hundred base stations are connected to the ...

[Product Information](#)



[Mobile Phone Base Stations EMF / Health Fact Pack](#)

Mobile phones When a mobile phone is switched on, it responds to specific control signals from nearby base stations. When it has found the nearest base station in the network to which it ...

[Product Information](#)

[How to Use WhatsApp Web: The Ultimate Guide](#)

WhatsApp Web allows you to read and respond to WhatsApp messages directly from your computer through a browser. This guide will explain how to make the most out of ...

[Product Information](#)



Guide to Base Station Communications Equipment , Office of ...

The guide then describes basic equipment needed in a base station: a transceiver (transmitter and receiver), a control device, microphone and speaker, a transmission line, and an antenna.

[Product Information](#)

[How to Use WhatsApp on Your Computer \(and Web\)](#)

While there's no standalone WhatsApp client, you can use WhatsApp's web app and desktop client to send messages via your smartphone. Here's how to use WhatsApp on ...

[Product Information](#)



[Wireless Communication Base Station Location Selection ...](#)

1. Introduction Recently, with the rapid development of wireless communication technology, the enhancement of wireless network performance is concerned with meeting the ...

[Product Information](#)





Types and Applications of Mobile Communication Base Stations

Mobile communication base station is a form of radio station, which refers to a radio transceiver station that transmits information between mobile phone terminals through a ...

[Product Information](#)



Base Stations and Cell Towers: The Pillars of Mobile Connectivity

Base stations use antennas mounted on cell towers to send and receive radio signals to and from mobile devices within their coverage area. This communication enables ...

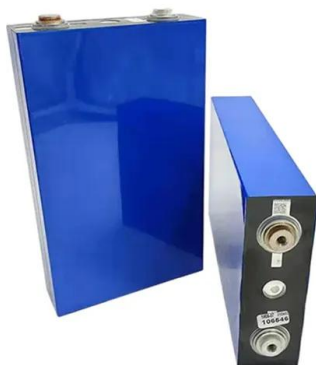
[Product Information](#)



5g Base Station Market Size & Share Analysis

The market is witnessing significant developments in base station technology and deployment strategies. By September 2023, China had built 3.189 million 5G base stations, ...

[Product Information](#)



How to Use WhatsApp Web and WhatsApp on Your Computer

You can easily access your WhatsApp messages on a computer by using WhatsApp Web or the desktop client. You'll just need to connect your account by scanning a ...

[Product Information](#)



[VHF Base Stations for Long-Range Communication](#)

What Is a VHF Base Station? A VHF (Very High Frequency) base station is a fixed communication device that operates within the 30 MHz to 300 MHz frequency range. Known ...

[Product Information](#)



[How to Use WhatsApp Web: A Step-by-Step Guide](#)

WhatsApp Web is a browser-based version of the WhatsApp mobile application. It mirrors your phone's WhatsApp account, syncing all messages, contacts, and media files to ...

[Product Information](#)

[How to use WhatsApp Web on the computer](#)

To use WhatsApp Web, open a browser and go to [web.whatsapp](https://web.whatsapp.com) . You'll need to log in and synchronize WhatsApp Web with WhatsApp on your mobile device by scanning a ...

[Product Information](#)



Contact Us

For catalog requests, pricing, or partnerships, please visit:
<https://les-jardins-de-wasquehal.fr>