

# **What energy components are used to power base stations**





## Overview

---

Since base stations are major consumers of cellular networks energy with significant contribution to operational expenditures, powering base stations sites using the energy of wind, sun, fuel cells or a combination gain mobile operators' attention. How do base stations use energy?

Since base stations are major consumers of cellular networks energy with significant contribution to operational expenditures, powering base stations sites using the energy of wind, sun, fuel cells or a combination gain mobile operators' attention.

What are the components of a base station?

**Power Supply:** The power source provides the electrical energy to base station elements. It often features auxiliary power supply mechanisms that guarantee operation in case of lost or interrupted electricity, during blackouts. **Baseband Processor:** The baseband processor is responsible for the processing of the digital signals.

How much power does a cellular base station use?

This problem exists particularly among the mobile telephony towers in rural areas, that lack quality grid power supply. A cellular base station can use anywhere from 1 to 5 kW power per hour depending upon the number of transceivers attached to the base station, the age of cell towers, and energy needed for air conditioning.

Can solar energy be used in cellular base stations?

One obstacle of entry of solar energy to cellular base stations is an intensive power requirement of the current base stations. As a result, the electronic industry is exploring new methods to reduce the power requirements for the electronic equipment used in the base stations.

What are the properties of a base station?



Here are some essential properties: Capacity: Capacity of a base station is its capability to handle a given number of simultaneous connections or users.

Coverage Area: The coverage area is a base station is that geographical area within which mobile devices can maintain a stable connection with the base station.

How does a base station work?

It usually connects the device to other networks or devices through a dedicated high bandwidth wire of fiber optic connection. Base stations typically have a transceiver, capable of sending and receiving wireless signals; Otherwise if they only send the trailer it will be considered a transmitter or broadcast point only.



## What energy components are used to power base stations

---



### What equipment does the base station energy storage cabinet ...

The equipment utilized in the base station energy storage cabinet comprises multiple essential components, which include: batteries, inverters, energy management ...

[Product Information](#)

### [Generating electricity - WJEC Power stations](#)

Nuclear power stations and coal-fired power stations usually produce the minimum level of electricity required by the National Grid over a period of 24 hours. This is called base load ...

[Product Information](#)

### FLEXIBLE SETTING OF MULTIPLE WORKING MODES



### [Macrocell base station components The consumed ...](#)

Download scientific diagram , Macrocell base station components The consumed power,, by a base station BS (macro or small cell) is given by the following ...

[Product Information](#)

### Telecommunication base station system working principle and ...

When the output mains power is cut off, the rectifier module stops working, and the solar energy cannot supply power normally. The system output load is powered by the battery ...



## [Product Information](#)



### **The Role of Hybrid Energy Systems in Powering Telecom Base Stations**

Discover how hybrid energy systems, combining solar, wind, and battery storage, are transforming telecom base station power, reducing costs, and boosting sustainability.

## [Product Information](#)



## [Power consumption of the base station components ...](#)

In this paper, the energy efficiency of a femtocell base station is investigated and compared for various bit rates and for three different wireless technologies ...

## [Product Information](#)



Support any customization

Inkjet

Color label

LOGO



## [Fundamentals of Modern Electrical Substations](#)

Part 1 of this course series is concentrated on demonstrating how modern power systems are arranged to accomplish all these goals; what place electrical substations have in the overall ...

## [Product Information](#)



## **What is a base station energy storage power station , NenPower**

A base station energy storage power station refers to a facility designed to store energy generated from various renewable sources and supply it efficiently to power base ...

[Product Information](#)



## **Power Base Station**

Base station power refers to the output power level of base stations, which is defined by specific maximum limits (24 dBm for Local Area base stations and 20 dBm for Home base stations) ...

[Product Information](#)



## **[Renewable Energy Sources for Power Supply of Base ...](#)**

Since base stations are major consumers of cellular networks energy with significant contribution to operational expenditures, powering base stations sites using the energy of wind, sun, fuel ...

[Product Information](#)



## **Components of a Power System (With Diagram) , Electrical Engineering**

Major components of a power system are- synchronous generators, synchronising equipment, circuit breakers, isolators, earthing switches, bus-bars, transformers, transmission lines, ...

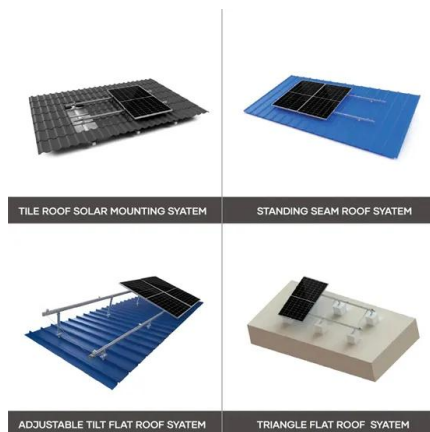
[Product Information](#)



## Mobile Base Station Energy Storage Principle: How It Keeps You

Think of a base station's energy storage system as a three-layer cake: 1. The Energy Sponge (Storage Devices) 2. The Shape-Shifter (Power Conversion System) This ...

### [Product Information](#)



## Renewable Energy Sources for Power Supply of Base Station Sites

Since base stations are major consumers of cellular networks energy with significant contribution to operational expenditures, powering base stations sites using the energy of ...

### [Product Information](#)

## [Strategy for Power Consumption Management at](#) [...](#)

As power consumption is becoming a key issue in cellular network and base transceiver station is the heart of cellular network. Because of less expensive ...

### [Product Information](#)



## [What are base station energy storage batteries used for?](#)

Energy storage batteries can be seamlessly integrated with renewable energy sources, enhancing the resilience and sustainability of telecommunications infrastructure. ...

### [Product Information](#)

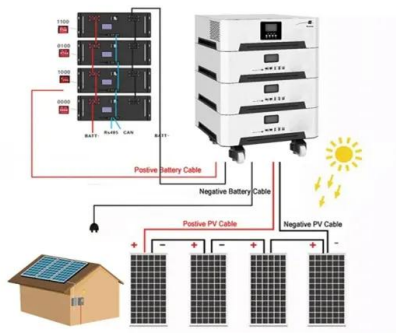




### Machine Learning and Analytical Power Consumption ...

Abstract--The energy consumption of the fifth generation (5G) of mobile networks is one of the major concerns of the telecom industry. However, there is not currently an accurate and ...

### Product Information



### Communication Base Station Energy Solutions

During the day, the solar system powers the base station while storing excess energy in the battery. At night, the energy storage system discharges to supply power to the base station, ...

### Product Information

## Contact Us

For catalog requests, pricing, or partnerships, please visit:  
<https://les-jardins-de-wasquehal.fr>