

# What does outdoor power direct supply mean





## Overview

---

What is an external power supply?

Sign up for email updates on regulations for this and other products As defined in the Code of Federal Regulations (CFR), "external power supply" means an external power supply circuit that is used to convert household electric current into DC current or lower-voltage AC current to operate a consumer product.

Is a permanent power outlet necessary?

For lighting, lawn tools used on a regular basis, or power needs for outbuildings, you need a permanent power solution for safety. This can involve an outdoor outlet addition to your home's main structure, or wiring run remotely to an outbuilding.

How do I choose an outdoor outlet?

When choosing an outdoor outlet, be sure to select an outdoor-rated and weatherproof model with built-in, high-sensitivity GFCI\ . All exterior outlets should have spring-loaded covers to protect them from weather, pests, and most importantly, moisture.

What are the rules for outdoor receptacle outlets?

Many of the rules applying to outdoor receptacle outlets are aimed at reducing the likelihood of shock, which is a notable risk anytime a user is in direct contact with the earth. 1 The principal rules for outdoor receptacles include: GFCI (ground-fault circuit-interrupter) protection is required for all outdoor receptacles.

How do I install an outdoor outlet?

To install an outdoor outlet, find a conveniently located indoor outlet to connect to with the wiring. Drill a hole through the house wall and feed the wiring in close to the indoor outlet. Then, fit the mounting box for the outdoor



outlet over that hole.

What are the rules for outdoor cable & conduit?

The applicable rules for outdoor cables and conduits include: Exposed or buried wiring/cable must be listed for its application. Type UF cable is the most commonly used nonmetallic cable for residential outdoor wiring runs. UF cable can be direct-buried (without conduit) with a minimum of 24 inches of earth cover.



## What does outdoor power direct supply mean

---



### [What is an outdoor power supply and what are its ...](#)

The outdoor power supply is actually an outdoor emergency power supply that converts direct current into alternating current, and is composed of chargers, ...

### [Product Information](#)

### [National Electrical Code \(NEC\) Rules for Outdoor Wiring](#)

The National Electrical Code (NEC) includes many specific requirements for installation of outdoor circuits and equipment. With outdoor wiring, the primary safety concerns ...

### [Product Information](#)



### [What is an outdoor power supply and what are its working](#)

The outdoor power supply is actually an outdoor emergency power supply that converts direct current into alternating current, and is composed of chargers, inverters, batteries, isolation ...

### [Product Information](#)



### [How to choose an outdoor power supply?](#)

How to choose an outdoor power supply? The only purpose of this article is to save your time with the data I have compiled and to provide you with a comprehensive ...

### [Product Information](#)



### [What's the Difference Between Local and Remote Power...](#)

It tends to be that power requirements and specs can be a tedious and confusing part of purchasing new lighting. We thought we'd take some of the pressure off by showing you the ...

### [Product Information](#)

### [Outdoor Power System Design and Cost Considerations](#)

A professionally designed and manufactured outdoor power system will resolve power quality issues while reducing maintenance costs and downtime. These systems can be ...

### [Product Information](#)



### [Power Supply Basics: Function and Operation Explained](#)

What Is a Power Supply? Do not confuse a power supply with a power source. The source is the origin of incoming electricity. The electricity source is usually an outlet, battery, or generator. ...

### [Product Information](#)





### [Understanding outdoor power distribution units](#)

What is an outdoor power distribution unit?  
Outdoor power distribution units are permanently installed in locations such as a public park, pedestrianised street or visitor attraction

#### [Product Information](#)



### **External Power Supplies**

As defined in the Code of Federal Regulations (CFR), "external power supply" means an external power supply circuit that is used to convert household electric current into DC current or lower ...

#### [Product Information](#)

### **The Best Ways To Run Power Outside**

Learn how to safely direct power outside with these outdoor electrical tips. For short-term power supply needs, opt for extension cords. Outdoor extension cords have the ability to ...

#### [Product Information](#)



### [Understanding Direct Power: What Consumers Need to Know](#)

What is Direct Power? Direct power refers to an energy supply model where consumers purchase electricity directly from a generator or supplier instead of through a ...

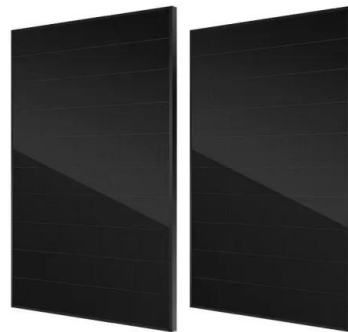
#### [Product Information](#)



## Understanding Power Supplies

This is a work in progress .. Power Supplies: Understanding them and which ones to use The typical guitar pedal uses a 9 volt, DC, center negative power supply. Well, what does that ...

[Product Information](#)



[What's the Best Way to Run Power Outside? , Mr. Electric](#)

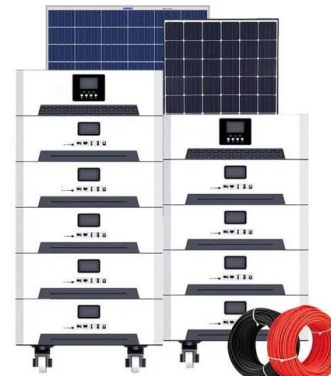
For lighting, lawn tools used on the regular, or outbuilding power needs, you need a permanent power solution for safety, whether that involve an outdoor outlet addition to your ...

[Product Information](#)

[UF-B Wire \(Direct Burial\) , WireAndCableYourWay](#)

UF-B Wire (Direct Burial) Want to see all more direct burial options? Shop our entire selection of Direct Burial Cable. Underground feeder cables are designed to bring power from indoor to ...

[Product Information](#)



[Complete Guide: Choosing Outdoor-Rated Cables](#)

Outdoor-rated cables typically carry specific labeling such as "UV-resistant," "direct burial," or "outdoor-rated." Certification marks like UL can also indicate adherence to ...

[Product Information](#)



### [Understanding outdoor power distribution units](#)

What is an outdoor power distribution unit?  
Outdoor power distribution units are permanently installed in locations such as a public park, pedestrianised street or visitor ...

### [Product Information](#)



## Contact Us

---

For catalog requests, pricing, or partnerships, please visit:  
<https://les-jardins-de-wasquehal.fr>