

# **What does inverter AC priority mean**





## Overview

---

When should a solar inverter be used?

The only time solar is used is when there is no Utility power available. I did some tests and set the voltage on the battery in the inverter to not go below 26.5V so the SbU mode works and then if the battery goes below 26.5V Utility power kicks in to charge it and serve the current load.

Does a solar inverter work if the battery goes below 26.5v?

I did some tests and set the voltage on the battery in the inverter to not go below 26.5V so the SbU mode works and then if the battery goes below 26.5V Utility power kicks in to charge it and serve the current load. During the day the battery and load are both served from the Solar power.

Is it hard to maximize PV usage with a must inverter?

The next day, when solar power is available, it will continue powering the loads from the grid, until battery has reached setting #21. So in short, I find it hard to maximize PV usage with the MUST inverters. On 2024/05/16 at 5:20 AM, meetyg said: There are a few things to address here: 1.

Should you charge a battery with a mains or off-grid inverter?

If you choose to charge the battery with the mains, you should notice that the efficiency will be reduced because the mains will charge the battery and then discharge it, resulting in a certain amount of power loss. Usually, off-grid inverter charging is used in such scenarios.

Can a solar inverter charge a battery with UTI mode?

Using Uti mode: This works fine. I have configured the inverter to charge the batteries with solar however, if there is excess solar the inverter still uses utility to power the load. The only time solar is used is when there is no Utility power available.



Why does my inverter not charge a battery?

if the battery cables are very thin or long it can also cause a voltage drop, so then the battery isn't really at full voltage and the inverter thinks it is, once it stops charging the voltage settles and it sees the battery isn't full and thus starts charging again



## What does inverter AC priority mean

---



### [How to Choose the Operating Mode of Solar Inverter?](#)

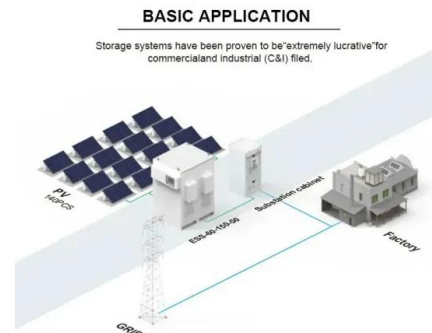
When the solar inverter battery is fully charged, the load will be powered by the battery even if the mains is normal. When the battery is at low voltage and the mains is stable, ...

### [Product Information](#)

### [Hybrid Inverter Output Priority . DIY Solar Power Forum](#)

The power limit then is the inverter's output capacity + the grid supply capacity. An off grid inverter with an AC input from the grid puts the inverter in series between the grid ...

### [Product Information](#)



### [What Is Inverter Air Conditioning Technology?](#)

Remember those sweltering summer days when your air conditioner would cycle on and off, creating loud noises and inconsistent temperatures? That's because older AC units ...

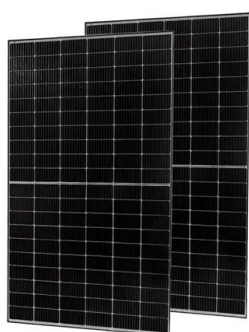
### [Product Information](#)

### [How to choose the working modes of solar inverter?](#)

Usually solar inverters have three working modes, PV (battery) priority, mains priority and ECO mode. Which working mode can maximize the utilization of photovoltaic ...



## [Product Information](#)



## **Inverter AC Battery Priority Question , DIY Solar Power Forum**

I would like to have it switch to battery if the batteries are at 90% charge, but if the batteries get low to 10% I want it to switch back to AC priority. I want full control over the ...

## [Product Information](#)

## **Demystifying Solar Inverter Jargon: A Clear Guide For Consumers**

Conclusion Understanding terms like split-phase AC output, low-frequency design, pure sine wave conversion, MPPT charge controller, and operation modes (DC priority, AC priority, intelligent ...

## [Product Information](#)



## [How to Choose the Working Mode of The Off Grid Inverter](#)

Mains priority charging: The mains power is prioritized for charging the battery. Photovoltaic power charges the battery only when there is no mains power. It is suitable for ...

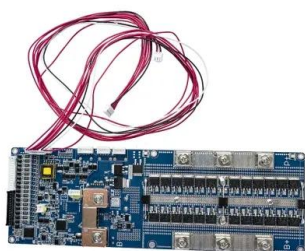
## [Product Information](#)



### [How to prioritize solar in a DC-coupled system](#)

Out of the box, a Multi or Quattro inverter/charger will always have its charger enabled. So when the batteries need a charge during the day, it will be charging them together ...

### [Product Information](#)



### **How to Set Priority as 1st:Solar 2nd:Utility/Grid and 3rd:Battery**

The problem would be how to let the inverter/charger know about that decision. You could not just disconnect the grid AC from the inverter charger because then you would ...

### [Product Information](#)

## **4. Configuration**

4.3.2. Grid metering Select External meter if an external meter such as an EM540 is installed, otherwise leave the setting as Inverter/Charger. All loads and (optional) grid-tie inverters must ...

### [Product Information](#)



### [Understanding Inverter Input And Output: What Is The ...](#)

Inverters are devices that play an important role in modern, green, and clean electrical systems. They work by converting the power obtained from the DC ...

### [Product Information](#)



## Configuration for a MUST Inverter

My interpretation of the SUB setting description is that it'll draw as much solar as it can, if the loads is more than what solar can give, it'll draw from the grid, and if the grid is not ...

[Product Information](#)



## [Why inverter need Inverter battery priority unattended?](#)

By prioritizing the battery bank, the inverter can ensure a steady and reliable source of power even when the external source is unavailable. In addition, an inverter with battery priority can ...

[Product Information](#)



## [Choosing Grid or Generator Priority on my XW inverter](#)

Using the SCP or Combox, go to your inverter's Advanced Settings > AC Settings > AC Priority & choose desired AC input priority. Released for: Schneider Electric USA

[Product Information](#)



- ☒ 100KWH/215KWH
- ☒ LIQUID/AIR COOLING
- ☒ IP54/IP55
- ☒ BATTERY 6000 CYCLES

## How Does The Air Conditioner Inverter Work? Unlocking The Magic

The air conditioner inverter is a vital part of the AC unit, and it's responsible for a lot of the unit's cooling power. Here's a look at how the inverter works to keep your home cool. ...

[Product Information](#)





## What are the different system modes that can be selected from ...

In Priority Backup mode, the inverter prioritizes keeping batteries charged and ready for grid interruption using solar or grid power. If the battery is not fully charged, all available solar ...

[Product Information](#)



## [AC / Battery Priority Mode Switch - Sineer Power](#)

In AC priority mode, when AC input is present, the battery will be charged first, and the inverter will transfer the input AC to power the load. Only when the AC input is stable for a ...

[Product Information](#)



## Contact Us

---

For catalog requests, pricing, or partnerships, please visit:  
<https://les-jardins-de-wasquehal.fr>