

What are the communication equipment in the base station room





Overview

A BTS is usually composed of: Transceiver (TRX) Provides transmission and reception of signals. It also does sending and reception of signals to and from higher network entities (like the base station controller in mobile telephony). This can be separated into a dedicated device known as a Remote radio head (RRH). Power amplifier (PA) Amplifies the signal from TRX for transmission through antenna; may be in.

Communication equipment is the main part of a base station. These parts send and receive signals for wireless communication. Important items include antennas, transceivers, and routers. Antennas send and pick up signals from phones. Transceivers turn signals into data. What is a base station in telecommunications?

In telecommunications, a base station is a fixed transceiver that is the main communication point for one or more wireless mobile client devices. A base station serves as a central connection point for a wireless device to communicate.

How does a base station communicate with a client device?

Generally, if client devices wanted to communicate to each other, they would communicate both directly with the base station and do so by routing all traffic through it for transmission to another device. Base stations in cellular telephone networks are more commonly referred to as cell towers.

What is a mobile base station?

Base Station generally refers to the “public mobile communication base station”, (abbr.: BS), the base station is used to provide signals to mobile phones. It usually consists of the following four parts: Antenna-Feeder System Responsible for signal transmission and reception, including antennas and feeders.

What are the functions of a base station?

2. Antenna: The base station has one or more antennas to transmit and receive signals. Antennas are responsible for radiating the signals into the air



and capturing the signals from the air. 3. Baseband processing unit: It is responsible for processing the signals received from the transceiver.

Is a base station a transmitter or broadcast point?

Base stations are generally a transceiver, capable of sending and receiving wireless signals; otherwise, if they only transmitted signals out, they would be considered a transmitter or broadcast point. A base station will have one or more radio frequency (RF) antennas to transmit and receive RF signals to other devices.

Why are base stations important for modern telecommunications?

In summary, base stations are critical for modern telecommunications as they serve as the link between mobile devices and the extensive network infrastructure that spans the globe. The strategic deployment and ongoing improvement of these stations are essential for maintaining global connectivity.



What are the communication equipment in the base station room



[Optimal configuration of 5G base station energy storage ...](#)

The high-energy consumption and high construction density of 5G base stations have greatly increased the demand for backup energy storage batteries. To maximize overall ...

[Product Information](#)

What is a Base Station Cabinet

Communication equipment is the main part of a base station. These parts send and receive signals for wireless communication. Important items include antennas, transceivers, ...

[Product Information](#)



[Introduction of base station and Remote Radio Unit](#)

Generally speaking, a base station contains three antennas, each of which transmits signals in a 120-degree direction around the periphery, together by which can ...

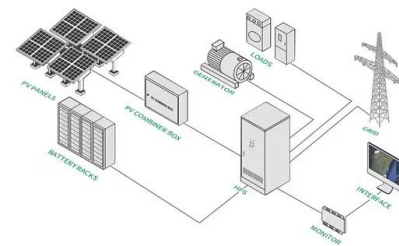
[Product Information](#)

Base transceiver station

Provides transmission and reception of signals. It also does sending and reception of signals to and from higher network entities (like the base station controller in mobile telephony). This can ...



Product Information



Base transceiver station

A BTS is usually composed of: Transceiver (TRX) Provides transmission and reception of signals. It also does sending and reception of signals to and from higher network entities (like the base station controller in mobile telephony). This can be separated into a dedicated device known as a Remote radio head (RRH). Power amplifier (PA) Amplifies the signal from TRX for transmission through antenna; may be in...

Product Information

Base Station System Structure

2 Base Station Background The intent of this section is to explore the role of base stations in communications systems, and to develop a reference model that can be used to describe and ...



Product Information



5G Communication Base Stations Participating in Demand ...

The literature [10] sorts out the key technologies necessary for 5G base stations to participate in demand response, foresees the application scenarios for 5G base stations to ...

Product Information



[How does a TETRA base station work? - Wray Castle](#)

The base station can also be integrated with other communication systems, such as dispatch consoles and control room equipment, to facilitate coordination and decision ...

[Product Information](#)



[The Base Station in Wireless Communications: The Key to ...](#)

Equipped with an electromagnetic wave antenna, often placed on a tall mast, the base station enables communication between mobile terminals (such as mobile phones or ...

[Product Information](#)

[What is Telecommunication Base Station , China Hop](#)

Generally speaking, a base station consists of three antennas, each transmitting signals in a 120 degree direction towards the surrounding area, which together provide seamless coverage of ...

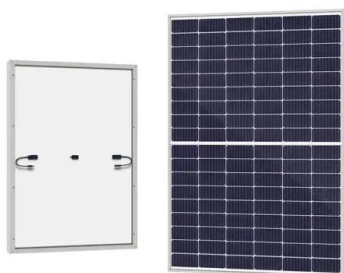
[Product Information](#)



[Guide to Base Station Communications Equipment , Office of ...](#)

The guide then describes basic equipment needed in a base station: a transceiver (transmitter and receiver), a control device, microphone and speaker, a transmission line, and an antenna.

[Product Information](#)





[What is Telecommunication Base Station , China Hop](#)

Generally speaking, a base station consists of three antennas, each transmitting signals in a 120 degree direction towards the surrounding area, which together ...

[Product Information](#)



[FREQUENTLY ASKED QUESTIONS ON HEALTH AND...](#)

A base station (commonly known as a mast) is a transmission and reception station in a fixed location, consisting of one or more receive/transmit antenna and microwave dish mounted on ...

[Product Information](#)

5g base station architecture

5G (fifth generation) base station architecture is designed to provide high-speed, low-latency, and massive connectivity to a wide range of devices. The architecture is more ...

[Product Information](#)



[5G Base Station Prototyping: Architectures Overview](#)

The implementation of 5G technologies is associated with a number of difficulties, including the cost of upgrading the infrastructure of mobile operators. Therefore the introduction of different ...

[Product Information](#)



Contact Us

For catalog requests, pricing, or partnerships, please visit:
<https://les-jardins-de-wasquehal.fr>