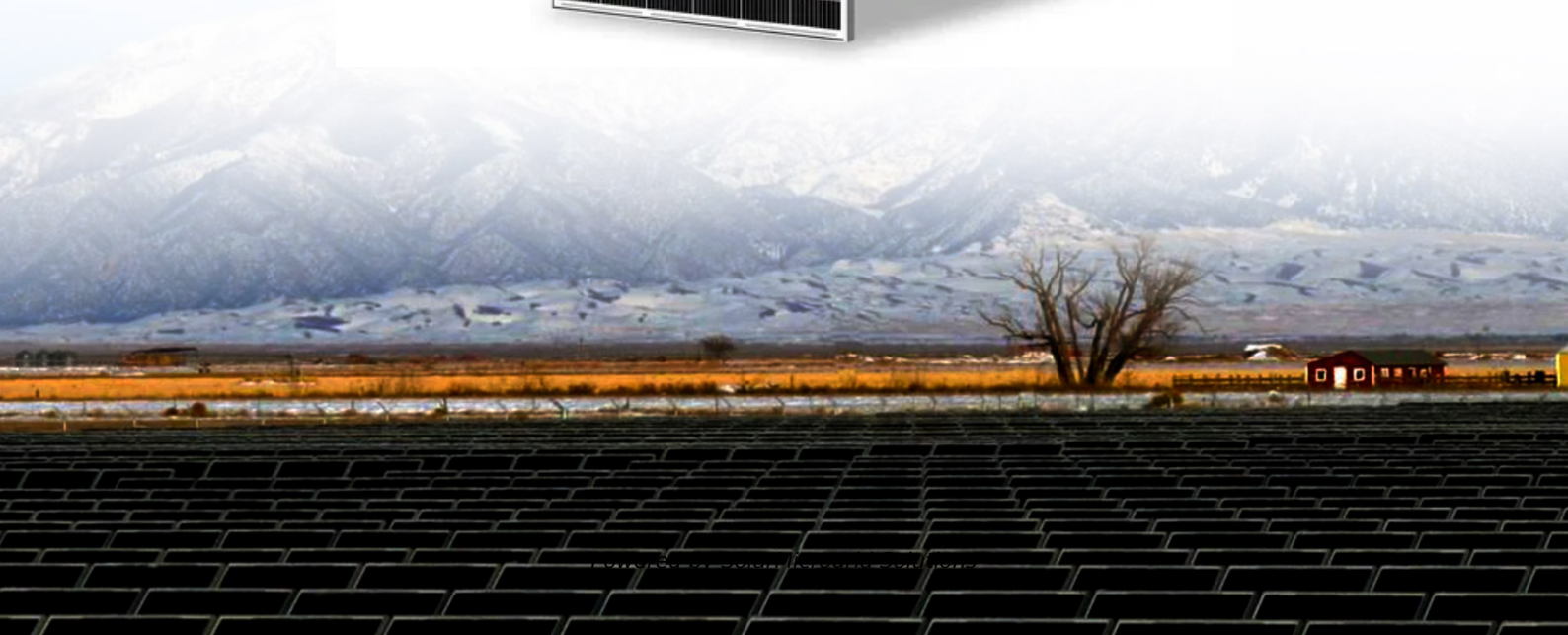
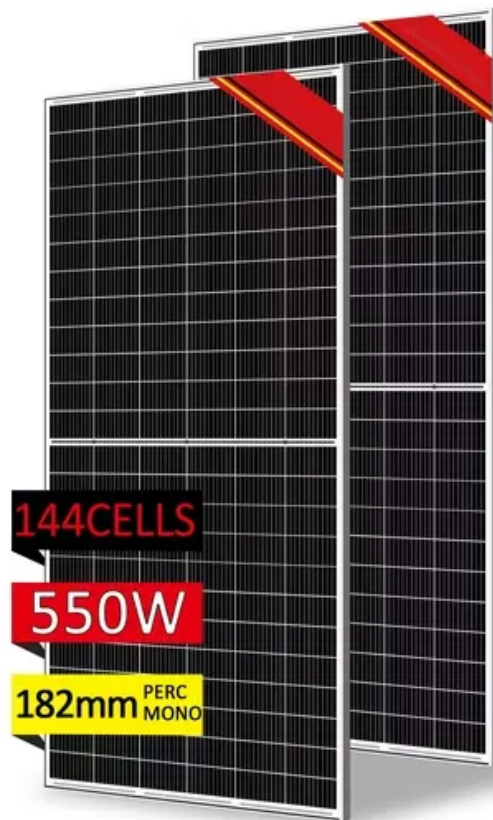


# The solar panel is fully charged at 30 watts





## Overview

---

Note: If you already have a solar panel and want to know how long it will take to charge your battery, use our solar battery charge time calculator.

How many watts a solar panel to charge a battery?

You need around 360 watts of solar panels to charge a 12V 100ah Lithium (LiFePO4) battery from 100% depth of discharge in 4 peak sun hours with an MPPT charge controller. What Size Solar Panel To Charge 50Ah Battery?

.

How many watts a solar panel to charge 130ah battery?

You need around 380 watts of solar panels to charge a 12V 130ah Lithium (LiFePO4) battery from 100% depth in 5 peak sun hours with an MPPT charge controller. What Size Solar Panel To Charge 140Ah Battery?

.

How long does a 300W solar panel charge a 12V 50Ah battery?

Here you have it: A single 300W solar panel will fully charge a 12V 50Ah battery in 10 hours and 40 minutes. You can use this 3-step method to calculate the charging time for any battery. Let's look at how we can further simplify this process with the use of a solar panel charge time calculator:.

How long does a solar panel take to charge a battery?

Now divide the battery capacity after DoD by the solar panel output (after taking into account the losses). Turns out, 100 watt solar panel will take about 9 peak sun hours to fully charge a 12v 100ah lead acid battery from 50% depth of discharge. how fast should you charge your battery?

.

How many solar panels do I need to charge a 50Ah battery?



You need around 180 watts of solar panels to charge a 12V 50ah Lithium (LiFePO4) battery from 100% depth of discharge in 4 peak sun hours with an MPPT charge controller. Related Post: [How Long Will A 50Ah Battery Last?](#)

.

Can a 300 watt solar panel charge a 24 volt battery?

Instead of three 100-watt solar panels, you may use one 300 watts solar panel. It will save money and help the installation procedure go more smoothly. Furthermore, it is lightweight and portable for outdoor use. To charge a 24-volt battery with a 300-watt solar panel, you'll need 3.4 hours of direct sunshine.



## The solar panel is fully charged at 30 watts

---



### [How Many Solar Panels to Charge 4 Batteries?](#)

If the batteries are only 50% discharged, the charge time is reduced to half. Four 12V 100ah batteries at 50% DOD is 2400 watts. With 4 x 300 watt solar panels the charge time will be 2 ...

### [Product Information](#)

### [How Many Solar Panels Will You Need to charge an EV?](#)

The typical home solar panel cranks out around 300-400 watts per panel. The average EV requires about 30 kilowatt-hours (kWh) to fully charge. So, you'll need to do some quick math: ...

### [Product Information](#)



### **How Many Solar Panels Do I Need to Charge a 48V 100Ah Battery?**

How many solar panels do I need to charge a 48V 100Ah battery efficiently? Typically, you need between 4 to 6 solar panels rated 250-300W each, totaling about 1,200 to ...

### [Product Information](#)

### **How Many Watts Solar to Charge a 12V Battery: The Best Setup ...**

To charge a 12V battery with a 100 amp hour capacity in about five hours, you need a solar panel that produces at least 240 watts (20 amps x 12 volts). For better efficiency, ...



## [Product Information](#)



### [What Size Solar Panel Do I Need to Charge a 12v ...](#)

Discover the right solar panel size to efficiently charge your 12V battery. Learn how to calculate wattage, consider battery capacity, and optimize your solar ...

### [Product Information](#)



### **Solar Panel Charge Time Calculator: Accurately Estimate How ...**

Estimating how much time it will take to fully charge a battery using solar panels is not always simple. There are many different variables that will affect the ultimate result, such ...

### [Product Information](#)



### **How to charge 30w solar , NenPower**

Generally, while under peak sun conditions, a 30-watt solar panel can produce about 8-12 amp-hours in a full day. For instance, charging a 20Ah battery with a 30-watt panel ...

### [Product Information](#)



## The 30 Watt Solar Panel: What Can This Small Panel Do For You?

To do this we need to do a little math (don't worry, we'll keep things as simple as possible!). The first thing we need to figure out is how much electric current the 30 watt panel will produce. To ...

[Product Information](#)



## Everything You Need to Know About Solar Chargers , BatteryStuff

Assume you take a discharged 100-amp hour battery and charge it with a 30-watt solar panel under ideal summertime light conditions. After a full week, the battery will be just ...

[Product Information](#)

## Solar Panel Charge Time Calculator For 12V Batteries ...

To be able to determine how long it takes for a solar panel to charge this battery, we have to calculate the total charge this battery can hold. This is measured in ...

[Product Information](#)



## How Many Solar Panels to Charge 2 12 Volt Batteries for Off-Grid ...

Wondering how many solar panels you need to charge two 12-volt batteries? This comprehensive guide explores factors like battery capacity, charging efficiency, and solar ...

[Product Information](#)



### [How Long Will a 200W Solar Panel Take to Charge a Battery?](#)

The formula is: Battery capacity (in watt hours) / solar panel power (in watts) = battery charge time In less than ideal conditions, double the charge time. In ideal situations, a 200W solar panel ...

[Product Information](#)



### [The 30 Watt Solar Panel: What Can This Small Panel...](#)

To do this we need to do a little math (don't worry, we'll keep things as simple as possible!). The first thing we need to figure out is how much electric current ...

[Product Information](#)

### [Solar Battery Charge Time Calculator](#)

With a 120Ah battery and a 250W solar panel, Alex uses the calculator to determine the charge time. With 4.5 hours of daily sunlight, the charge time is estimated at ...

[Product Information](#)



### **Solar Panel Charge Time Calculator For 12V Batteries (100W-500W Panels)**

To be able to determine how long it takes for a solar panel to charge this battery, we have to calculate the total charge this battery can hold. This is measured in Wh or watt-hours. Here is ...

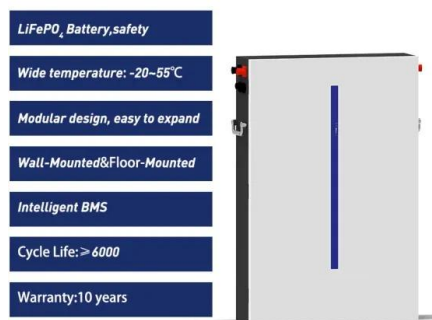
[Product Information](#)



## How Many Watts of Solar Panel Do You Need to Charge a Deep ...

To charge a deep cycle battery efficiently, you need a solar panel with sufficient wattage based on the battery's capacity and energy consumption. A typical 12V 100Ah deep ...

[Product Information](#)



## Solar Panel Size Calculator

Use our solar panel size calculator to find out the ideal solar panel size to charge your lead acid or lithium battery of any capacity and voltage. For example, 50ah, 100ah, ...

[Product Information](#)

## Contact Us

For catalog requests, pricing, or partnerships, please visit:  
<https://les-jardins-de-wasquehal.fr>