

Standardization requirements for power supply rooms of communication base stations





Overview

How many power systems does a telecommunication room use?

The new- generation telecommunication room energy solution uses only one power system to provide power supply, backup and distribution for CT and IT devices. No independent AC power system or AC cable tray is required. Figure 3 shows the recommended power supply architecture of the access telecommunication room.

How to design a solar-powered base station?

In order to design and implement a solar-powered base station, PVSYST simulation software has been used in various countries including India, Nigeria, Morocco, and Sweden. This software allows for estimation of the number of PV panels, batteries, inverters, and cost of production of energy considering the geographical and other design parameters.

How can the electronic industry reduce power requirements for base stations?

As a result, the electronic industry is exploring new methods to reduce the power requirements for the electronic equipment used in the base stations. The first approach is to make the base stations more tolerant to heat which will then require less power for air conditioning.

Should telecommunication rooms be expanded?

Nearly 50% of conventional telecommunication rooms have insufficient power room space and load-bearing capacity. Therefore, the power room needs to be expanded. The expansion of the power supply room involves site survey, negotiation, approval, civil engineering, construction, and decoration.

How much power does a cellular base station use?

This problem exists particularly among the mobile telephony towers in rural areas, that lack quality grid power supply. A cellular base station can use anywhere from 1 to 5 kW power per hour depending upon the number of



transceivers attached to the base station, the age of cell towers, and energy needed for air conditioning.

How much power does a power station need?

a) Power station requirement: power density 7.2 kW/U (including power distribution), the minimum power provided by the power station should be 24 kW (450 A), possibility to expand in a simple way at higher power, e.g., 36 kW. U represents a unit rack height corresponding to 44.45 mm (1 3/4 inch) – a typical frame has height 19 inches.



Standardization requirements for power supply rooms of communica



[Selecting the Right Supplies for Powering 5G Base Stations](#)

These tools simplify the task of selecting the right power management solutions for these devices and, thereby, provide an optimal power solution for 5G base stations components.

[Product Information](#)

Hybrid Power Supply System for Telecommunication Base Station

This research paper presents the results of the implementation of solar hybrid power supply system at telecommunication base tower to reduce the fuel consumption at rural area. An ...

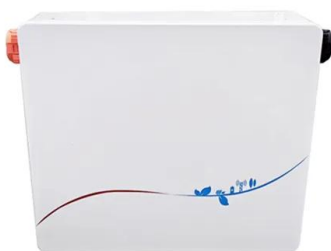
[Product Information](#)



Towards Efficient, Reliable, and Cost-Effective Power Supply ...

Power supplies requirements in 5G telecom base stations The requirements mentioned above for 5G infrastructure translate into some key features required for AC-DC ...

[Product Information](#)



[Communication base station-solar power supply ...](#)

Communication base stations located in remote areas can generally only draw electricity from rural power grids, with poor grid stability, long transmission ...



[Product Information](#)



[The power supply design considerations for 5G base stations](#)

For their PSU suppliers, a key design challenge is minimizing the power consumption during this quiescent period. The PSU must also be ready to immediately power up, so the ...

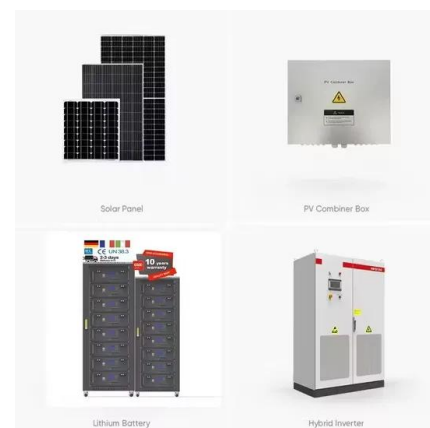
[Product Information](#)



Design of mobile base station communication power supply system

Abstract: According to the power grid and environmental conditions of mobile base stations, a solution for the reliability, maintainability and availability of the mobile base station ...

[Product Information](#)



Communication base station

Communication base stationCommunication base station Status Analysis: In the communication room, switching power supply and UPS have become indispensable devices in the computer ...

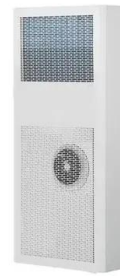
[Product Information](#)



Post-earthquake functional state assessment of communication base

There is a lack of models that can fully evaluate the post-earthquake functional states of base stations with the consideration of the dependencies between different ...

[Product Information](#)



[Communications System Power Supply Designs](#)

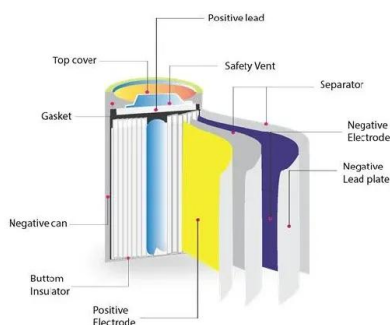
Voice-over-Internet-Protocol (VoIP), Digital Subscriber Line (DSL), and Third-generation (3G) base stations all necessitate varying degrees of complexity in power supply design. We ...

[Product Information](#)

2022 NFPA 72 Code.ai

24.10.2.2: The communications system shall be capable of monitoring additional power supplies for communications equipment vital to the transmission of off-premises signals. 24.10.3*: The ...

[Product Information](#)



[Significant Substation Communication Standardization ...](#)

This paper describes the intent and expected results of ongoing communication standardization efforts as well as the current state of affairs. The key to standardization is ...

[Product Information](#)



Understanding International Standards for Communication Power Supplies

International standards play a vital role in ensuring the safety, reliability, and market readiness of communication power supplies. These standards provide clear ...

[Product Information](#)



[Telecommunication Room \(TR\) Requirements & Standards ...](#)

Assume we use 2x power supply per 48-port switch, and each power supply would have 1000W or 3412 BTU/hr so 2x 48-port switches would be 2x 3412 BTU/hr Example: if a Comm Room ...

[Product Information](#)

A Guide to United States Electrical and Electronic Equipment ...

Effective March 10, 2020, the DOE adopted a new energy conservation standard for uninterruptible power supplies, a class of battery chargers. Compliance with the new standard ...

[Product Information](#)



(PDF) Dispatching strategy of base station backup power supply

With the mass construction of 5G base stations, the backup batteries of base stations remain idle for most of the time. It is necessary to explore these massive 5G base ...

[Product Information](#)



Power supply solutions and trends analysis for Small Cell mobile

Power supply solutions and trends analysis for Small Cell mobile communication base station
With the rapid growth in the number of small cells, new requirements such as zero footprint ...

[Product Information](#)



[STANDARDIZATION/INDIGENIZATION OF ELECTRICAL...](#)

Need for standardization comes in as the world over, variant technologies are being used for the MRTS/LRT/High speed rails all of whom are equally reliable and meet required safety ...

[Product Information](#)

[UNSW Communications Services Design & Installation...](#)

Communications rooms are to be a minimum of 3.5 metres deep and as long as required to fit the number of communications cabinets to be installed and any other wall mounted ...

[Product Information](#)



Contact Us

For catalog requests, pricing, or partnerships, please visit:
<https://les-jardins-de-wasquehal.fr>