

Specifications of photovoltaic panels installed on roofs





Overview

The Renewable Energy Ready Home (RERH) specifications were developed by the U.S. Environmental Protection Agency (EPA) to assist builders in designing and constructing homes equipped with a set of features that make the installation of solar energy systems after the completion of the home's construction.

These specifications were created with certain assumptions about the house and the proposed solar energy system. They are designed for builders.

EPA has developed the following RERH specification as an educational resource for interested builders. EPA does not conduct third-party verification of the.

Builders should use EPA's online RERH SSAT to demonstrate that each proposed system site location meets a minimum solar resource potential. EPA has.

The builder should install a 1" metal conduit from the designated inverter location to the main service panel where the system is intended to be tied into the home's.

How many solar panels can be installed on a roof?

Roof planes must be able to accommodate a minimum of two panels to be considered in your final design. The slope of your roof can affect your solar energy output. The ideal roof slope is 15-45 degrees. Anything beyond 45 degrees makes installation difficult and limits your solar energy production.

How do I know if my roof is suitable for solar panels?

Assess your roof's load-bearing capacity to support the weight of the solar panel system. Identify any obstructions or shading that could impact the efficiency of your solar panels. Ensure your roof's ventilation system is compatible with solar panel installations. The roof is key when installing solar panels.

Does a roof support solar photovoltaic panels or modules?



The structure of a roof that supports solar photovoltaic panels or modules shall be designed to accommodate the full solar photovoltaic panels or modules and ballast dead load, including concentrated loads from support frames in combination with the loads from Section CS507.1.1.1 (IBC 1607.13.5.1) and other applicable loads.

Can solar panels be installed on a roof?

Ensure your roof's ventilation system is compatible with solar panel installations. The roof is key when installing solar panels. Their orientation, pitch, and materials affect how much solar energy panels can capture. Knowing these details is crucial for homeowners thinking about solar panels.

What are the structural requirements for solar panels?

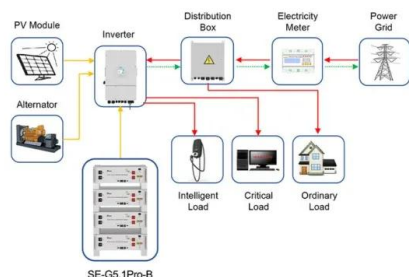
Structural requirements for solar panels are crucial to ensure their durability, safety, and efficient performance. These requirements vary depending on the type of installation, such as rooftop or ground-mounted systems, as well as the specific location and environmental factors.

What is a good roof pitch for solar panels?

The ideal roof pitch for solar panels is between 15 and 40 degrees. This angle ensures the panels get the most sun. Homeowners should check their roof's orientation and pitch. A well-angled roof boosts solar panel efficiency. A bad angle can reduce energy output, making solar panels less worthwhile.



Specifications of photovoltaic panels installed on roofs



Application scenarios of energy storage battery products

Roofing Requirements for Solar Panel Installation: ...

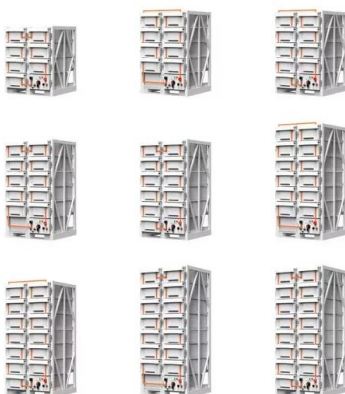
They will consider various factors such as your location, local climate, shading, and the type of solar panel system to be installed to determine the most ...

Product Information

Roofing Requirements for Solar Panel Installation: Everything ...

They will consider various factors such as your location, local climate, shading, and the type of solar panel system to be installed to determine the most suitable system for your roof.

Product Information



Structural Requirements for Solar Panels -- Exactus ...

This comprehensive guide outlines the structural requirements for solar panels and provides an overview on the inner workings of the installation ...

Product Information

Structural Requirements for Solar Panels -- Exactus Energy

This comprehensive guide outlines the structural requirements for solar panels and provides an overview on the inner workings of the installation process.



[Product Information](#)



[Roofing Requirements for Solar Panel Installation: ...](#)

Workers fixing solar panels onto mounting brackets on a tile roof Roof Pitch: The pitch, or angle, of your roof is another important consideration. Solar panels ...

[Product Information](#)

[Standards and Requirements for Solar Equipment: ...](#)

The roof be structurally capable of supporting the load of the modules and racking; The modules and racking be non-combustible; and Roof or wall penetrations (such as to attach the racking ...



[Product Information](#)



Guidelines on Rooftop Solar PV Installation for Solar Service ...

This provides information for the installation of solar PV system including PV modules, inverters, and corresponding electrical system on roof of an existing structure.

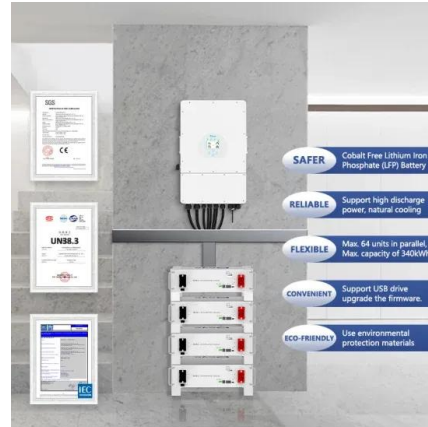
[Product Information](#)



[Solar Photovoltaic: SPECIFICATION, CHECKLIST AND GUIDE](#)

The RERH specifications and checklists take a builder and a project design team through the steps of assessing a home's solar resource potential and defining the minimum structural and ...

[Product Information](#)



[Home Solar Panels and Systems , Tesla](#)

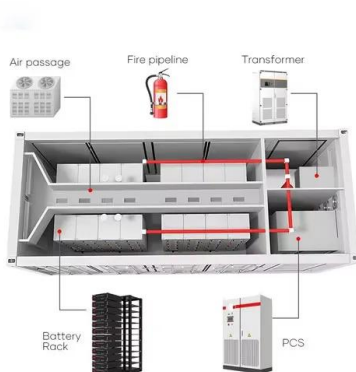
Tesla uses solar panels that offer a sleek and modern take on traditional panels. With our proprietary mounting hardware, panels can be installed close to your roof without the need for ...

[Product Information](#)

CHAPTER 5 CS PHOTOVOLTAIC SYSTEMS

Class A, B and C roof assemblies and roof coverings required to be listed by this section shall be tested in accordance with ASTM E108 or UL 790. In addition, fire-retardant-treated wood roof ...

[Product Information](#)



[Solar Panel Roof Requirements: What You Need to Know](#)

Discover essential roof requirements for solar panels. Learn about pitch, load capacity, and materials to ensure your home is ready for a solar energy system.

[Product Information](#)



[Solar Panel Datasheet Specifications Explained](#)

The article covers the key specifications of solar panels, including power output, efficiency, voltage, current, and temperature coefficient, as presented in solar ...

[Product Information](#)



Installation of Solar PV Systems

3.1.4 The main application of solar PV in Abu Dhabi is grid-connected; the PV system would typically be installed on the roof of Premises and would connect to the Premises' LV Main ...

[Product Information](#)

Solar Panel Sizing and Design

Roof planes must be able to accommodate a minimum of two panels to be considered in your final design. The slope of your roof can affect your solar energy output. The ideal roof slope is 15 ...

[Product Information](#)



Contact Us

For catalog requests, pricing, or partnerships, please visit:
<https://les-jardins-de-wasquehal.fr>