

Portuguese Split Phase Sine Wave Inverter





Overview

What is a pure sine wave inverter?

A pure sine wave inverter is a type of power inverter that converts DC (direct current) power from batteries or other DC sources into AC power that can be used to power a wide range of electronic devices and appliances, including sensitive equipment such as laptops, refrigerators, air conditioners, and more.

What is a split phase inverter?

In this comprehensive guide, we will delve into the intricacies of split phase inverters, explaining their working principles and shedding light on their diverse uses. A split phase inverter is a type of power inverter that transforms direct current (DC) into alternating current (AC) with a split phase output.

What is a modified sine wave inverter?

Modified sine wave inverters and pure sine wave inverters are two types of power inverters. The main difference between them lies in the quality and characteristics of the AC waveform they produce.

Is a pure sine wave inverter better than a modified sine wave?

In summary, pure sine wave inverters are generally considered to be more suitable for powering sensitive electronic devices and appliances, while modified sine wave inverters may be a more cost-effective option for basic power needs. When Do You Need a Pure Sine Wave Inverter?

.

Why do you need a sine wave inverter?

Most appliances in your home use AC power, so you need it to convert the DC power that solar panels produce to AC power. It also brings up the voltage to the grid level. A pure sine wave inverter also saves you money, as it's much



more efficient than the older, jagged wave inverters.

Do you need a sine wave inverter for solar panels?

You need a pure sine wave inverter if you plan to install solar panels on your roof or RV. Most appliances in your home use AC power, so you need it to convert the DC power that solar panels produce to AC power. It also brings up the voltage to the grid level.



Portuguese Split Phase Sine Wave Inverter



[6.5KW Single Phase Split Phase Pure Sine Wave ...](#)

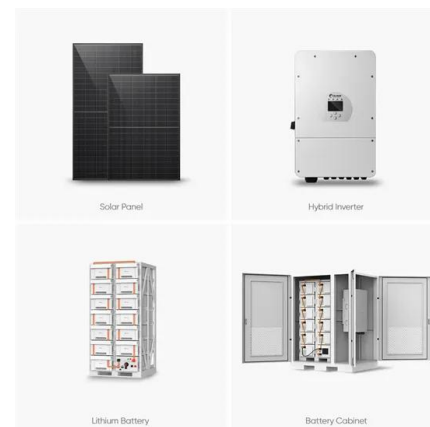
SPI series is a solar hybrid inverter integrating solar energy storage, mains charging energy storage, and AC sine wave output. It adopts DSP control and ...

[Product Information](#)

[Pure Sine Wave Inverter: All You Need to Know](#)

In this blog post, we will explore the fundamentals of pure sine wave inverters, including what they are, how they work, the differences between modified and pure sine wave ...

[Product Information](#)



Understanding The Benefits Of Split-Phase Pure Sine Wave ...

One specific type of pure sine wave inverter that offers even more benefits is the split-phase pure sine wave inverter. This type of inverter provides two separate 120V AC outputs, with a 240V ...

[Product Information](#)

[5KW 48V 110/240Vac Split Phase Low Frequency Inverter](#)

5000W Pure Sine Wave Inverter The POW-RELAB-SPLIT series solar inverter-charger integrated machines offer a seamless integration of solar energy storage and means charging energy ...



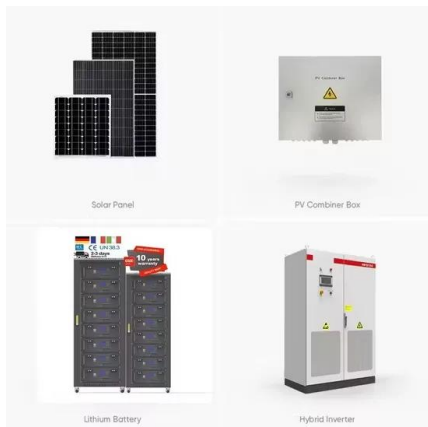
[Product Information](#)



Understanding Split Phase Inverters: A Comprehensive Guide for

A split phase inverter is a type of power inverter that transforms direct current (DC) into alternating current (AC) with a split phase output. This output consists of two 120-volt AC waveforms, ...

[Product Information](#)



[Split Phase Pure Sine Wave Solar Inverter SPI Series ...](#)

SPI series is a solar hybrid inverter integrating solar energy storage, mains charging energy storage, and AC sine wave output. It adopts DSP control and ...

[Product Information](#)



Understanding The Benefits Of Split-Phase Pure Sine Wave Inverters

One specific type of pure sine wave inverter that offers even more benefits is the split-phase pure sine wave inverter. This type of inverter provides two separate 120V AC outputs, with a 240V ...

[Product Information](#)





[Everything You Need to Know About the Split Phase Inverter](#)

A split phase inverter refers to a power conversion device capable of converting a single-phase or direct current (DC) input into multiple-phase outputs, typically two or more ...

[Product Information](#)



10kW Hybrid Solar Inverter with Split Phase Output, IP65 & Wifi

10kW pure sine wave inverter: 110V/220V dual voltage, IP65 protection, 99.9% efficiency. Supports grid-tied energy resale and universal 48V battery compatibility. Reliable power ...

[Product Information](#)



[AIMS Power 6000 -Watt Power Inverter Lowes](#)

The AIMS Power low frequency 6000 Watt 48-volt, split phase 120/240 Vax power inverter charger is not your average every-day power inverter. This is a top-of ...

[Product Information](#)



[Split Phase Pure Sine Wave Solar Inverter SPI Series](#)

SPI series is a solar hybrid inverter integrating solar energy storage, mains charging energy storage, and AC sine wave output. It adopts DSP control and state-of-art control algorithm, ...

[Product Information](#)



[5000W 48Vdc 110Vac All In One Inverter Supports Up ...](#)

5kW Hybrid Inverter Charger with Li-ion Battery Activation This 5000W pure sine wave inverter can activate Li-ion battery remains dormant with either the ...

[Product Information](#)



7000W Split-Phase Pure Sine Wave Solar Inverter Portugal , Ubuy

With a robust 7000W capacity, this inverter efficiently converts solar energy into reliable AC power, making it suitable for heavy-duty applications and off-grid power solutions.

[Product Information](#)

6.5KW Single Phase Split Phase Pure Sine Wave Solar Inverter

6.5KW SPI series solar inverters feature advanced MPPT technology with up to 99.9% efficiency. A maximum PV input current of 18+18A is perfect for high power modules.

[Product Information](#)



Contact Us

For catalog requests, pricing, or partnerships, please visit:
<https://les-jardins-de-wasquehal.fr>