

Photovoltaic power station power generation inspection





Overview

Why do solar photovoltaic plants need verification & inspection services?

For this reason, verification and inspection services in solar photovoltaic plants are essential to ensure the quality of the modules and check their performance. This is especially relevant during the construction and development phases of the project, as well as in the subsequent operation.

What services are provided at a photovoltaic plant?

Inspection of container loading. Services on site at photovoltaic plants (Post-shipment): these services are carried out after transport from origin to where the client requires it, whether at the plant, destination port or any other location. The following tests are included at the client's request:.

Why are photovoltaic panels not a good quality?

Due to the high number of photovoltaic panels required for the construction of new solar plants, cases have been observed where the final quality of the product is not as expected. This may be due to manufacturing defects, transport or handling problems, incorrect installation or inadequate maintenance.

How many photovoltaic modules can a laboratory test per day?

This laboratory can test more than 200 photovoltaic modules per day with an uncertainty of less than 3%. Due to its characteristics, it is capable of testing modules of up to 1400 x 2700 mm of different types (high efficiency crystalline modules, bifacial modules, thin film modules and PERC or HJT solar cells).

How to check the voltage of PV modules connected in series?

For checking the voltage of PV modules connected in series. Check the operation and installation of control devices such as relay switches and circuit breakers. Test the insulation resistance to ensure electrical safety. All



Category 1 tests must be completed and passed before moving on to the additional Category 2 tests.

How do I know if a PV module is faulty?

By knowing the deviation of the temperature, problems like the bypass diode in the PV arrays can be detected. Additional inspections are also available for inspections outside Category 1 and Category 2. Measure the resistivity according to the technical documentation provided by PV module manufacturer.



Photovoltaic power station power generation inspection



[Solar Photovoltaic: SPECIFICATION, CHECKLIST AND GUIDE](#)

Assumptions of the RERH Solar Photovoltaic Specification These specifications were created with certain assumptions about the house and the proposed solar energy system. They are ...

[Product Information](#)

Application Scenarios of Fiberglass Reinforced Plastic Grating for

Photovoltaic power station inspection channel: FRP grating can be used as the inspection channel of photovoltaic power station, providing safe and convenient passage conditions for the staff.

[Product Information](#)



Drone Intelligent Inspection Technology Empowers Upgrades in

11 hours ago · 2025-09-12 12:07 Drone Intelligent Inspection Technology Empowers Upgrades in Photovoltaic Industry Operations and Maintenance With the rapid development of the ...

LPR Series 19'
Rack Mounted



Inspection and condition monitoring of large-scale photovoltaic power

The massive growth of PV farms, both in number and size, has motivated new approaches in inspection system design and monitoring. This paper presents ...

[Product Information](#)



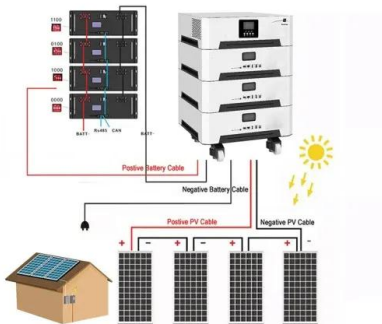
[Product Information](#)



Module defect detection and diagnosis for intelligent maintenance ...

The energy production efficiency of photovoltaic (PV) systems can be degraded due to the complicated operating environment. Given the huge installed capacity of large-scale ...

[Product Information](#)



In-Service Inspection of Photovoltaic Power Plants , TÜV SÜD

TÜV SÜD conducts inspections in line with the detailed test procedures and to-do lists provided in the directives for regular solar PV maintenance. Our evaluation takes into consideration your ...

[Product Information](#)



Photovoltaic Power Plant

Drones can precisely identify and locate defects in solar farms by utilizing high-definition visible light and thermal imaging. This facilitates early fault detection and preventive maintenance, ...

[Product Information](#)

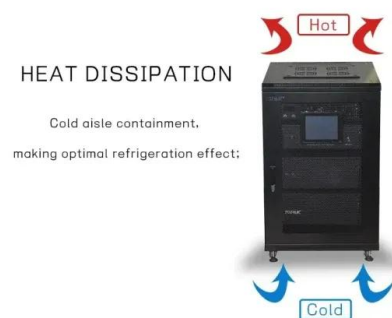




Guidelines for Operation and Maintenance of PVPS ...

Guaranteed (plant) availability (GAV) of the PV plant (percentage, %) is the second most common guarantee used in the O&M contracts for solar power plants. When discussing the varia- ...

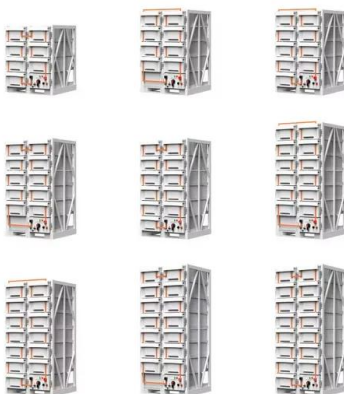
Product Information



Quality Inspection for PV Plants , SGS USA

Our quality inspection services for PV plants ensure that the installation of your photovoltaic power plant is carried out to the exact specifications and meets all existing standards and ...

Product Information



PV Power Plant Inspection Service

PV Power Plant Inspection Service is useful for owners of solar plants to uncover the causes of under-performance and to maximize the power generation for better investment returns.

Product Information



Testing and inspection of photovoltaic plants

For this reason, verification and inspection services in solar photovoltaic plants are essential to ensure the quality of the modules and check their performance. This is especially relevant ...

Product Information



Full Life Cycle Inspection of Photovoltaic Power Station-NOA ...

Through online monitoring of the operation of photovoltaic power station equipment, timely analyze and handle the fault symptoms, determine the cause and location of the equipment ...

[Product Information](#)



Maintenance of solar PV systems according to the IEC 62446-1 ...

The international standard for testing, documenting, and maintaining grid-connected PV systems is IEC 62446-1. Using the right measuring tools is important for keeping the system running ...

[Product Information](#)

Photovoltaic Power Station Inspection and Assessment Technical ...

Our goal is to ensure the reliability and safety of photovoltaic power systems through stringent quality controls and preventive maintenance measures.

[Product Information](#)

LiFePO ₄ Battery,safety
Wide temperature: -20~55℃
Modular design, easy to expand
The heating function is optional
Intelligent BMS
Cycle Life:≥ 6000
Warranty:10 years



 LFP 48V 100Ah

Power Generation Plant Inspection royalty-free images

Find Power Generation Plant Inspection stock images in HD and millions of other royalty-free stock photos, illustrations and vectors in the Shutterstock ...

[Product Information](#)



[Inspection Services for Solar Power Plants . Insperla](#)

Solar (Photovoltaic) power plant inspections review the entire plant design to ensure functionality and reduce risks, by reviewing standards and contracts, based on extensive experience.

[Product Information](#)



Outdoor Cabinet BESS
50 kWh/500 kWh Battery Storage System
Industrial and Commercial Energy Storage



- All in One**
Integrating battery packs
- High-capacity**
50~500kWh
- Degree of Protection**
IP54
- Operating Temperature Range**
-20~60°C (Derating above 50 °C)
- Intelligent Integration**
Integrated photovoltaic storage cabinet
- Rated AC Power**
50~100kW
- Altitude**
3000m(>3000m derating)

Solar PV Guidebook Philippines

The economic incentive of commercial users to source their power directly from an IPP based on the generation of power from renewable energies is low as long as the average generation ...

[Product Information](#)

Solar PV Post-Evaluation Checklist

Field Inspection - PV Modules and Array PV modules are physically installed per plans (number and layout) Array is optimized for performance without sacrificing aesthetics Trees and plants ...

[Product Information](#)



Contact Us

For catalog requests, pricing, or partnerships, please visit:
<https://les-jardins-de-wasquehal.fr>