

Lithium iron phosphate battery pack output voltage





Overview

LiFePO₄ batteries exhibit a very flat voltage curve during discharge. This means the voltage remains relatively constant for most of the discharge cycle, providing a stable power output.

Download the LiFePO₄ voltage chart here(right-click -> save image as).
Manufacturers are required to ship the batteries at a 30%.

Some charge controllers do not have dedicated Lithium charging parameters. Therefore, you must adjust the lead-acid parameters to match.

The best way to check the remaining battery capacity of a LiFePO₄ battery is to use a battery monitor. A battery monitor is a device that.

LiFePO₄ batteries, known for their stability and safety, have unique voltage characteristics that set them apart from other types like lead-acid batteries. 1. LiFePO₄ batteries.

Renowned for stability, safety, and long cycle life, LiFePO₄ batteries offer a nominal voltage of 3.2 volts per cell. This differs from traditional lithium-ion batteries, which typically have a nominal value of around 3.6 to 3.7 volts per cell.



Lithium iron phosphate battery pack output voltage



[LiFePO4 Voltage Charts \(1 Cell, 12V, 24V, 48V\)](#)

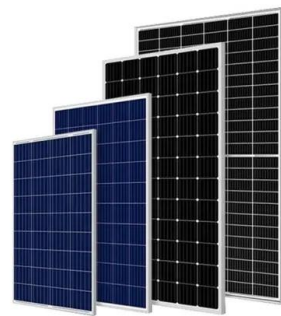
LiFePO4 batteries exhibit a very flat voltage curve during discharge. This means the voltage remains relatively constant for most of the discharge cycle, providing a stable power ...

[Product Information](#)

Lithium LiFePO4 Battery Voltage Charts For 12V, 24V, 48V, 3.2V

To help you out, we have prepared these 4 lithium voltage charts: 12V Lithium Battery Voltage Chart (1st Chart). Here we see that the 12V LiFePO4 battery state of charge ranges between ...

[Product Information](#)



Lithium Ion Battery Voltage Explained: Everything You Need to ...

A LiFePO4 (Lithium Iron Phosphate) battery has a significantly different voltage curve than other batteries. In fact, the LiFePO4 cell voltage is flat for most of its discharge ...

[Product Information](#)

[LiFePO4 Battery Voltage Chart: Your Ultimate Guide](#)

This voltage chart overviews the voltage ranges corresponding to different charge states in LiFePO4 battery pack configurations. However, referring to the manufacturer's ...



[Product Information](#)



Applications



[A Comprehensive Guide to LiFePO4 Voltage Chart](#)

This comprehensive guide will demystify the LiFePO4 voltage chart, explaining how to interpret voltage levels, maximize battery life, and optimize your energy ...

[Product Information](#)

24V 7Ah LiFePO4 Rechargeable Battery LF8011, 25.6V 179.2Wh ...

About this item Long cycle life, more than 2000 cycles.LF8011 24V Li-FePO4 battery pack consists of Li-FePO4 battery cells. 25.6V 7000mAh 179.2Wh Output voltage: ...

[Product Information](#)



[All Guide to LiFePO4 Voltage Chart 12V/48V/24V](#)

LiFePO4 (Lithium Iron Phosphate) batteries have a distinct voltage range that differentiates them from other lithium-ion batteries. The voltage of a LiFePO4 battery is a ...

[Product Information](#)





LiFePO4 Battery Voltage Chart

LiFePO4 battery voltage varies depending on charge level, temperature, and load conditions. Understanding its voltage chart is crucial for maintaining efficiency, safety, and ...

[Product Information](#)



Support any customization

Inkjet

Color label

LOGO



[Guide to LiFePO4 Voltage Chart , EcoFlow US](#)

Renowned for stability, safety, and long cycle life, LiFePO4 batteries offer a nominal voltage of 3.2 volts per cell. This differs from traditional lithium-ion ...

[Product Information](#)

[Guide to LiFePO4 Voltage Chart , EcoFlow US](#)

Renowned for stability, safety, and long cycle life, LiFePO4 batteries offer a nominal voltage of 3.2 volts per cell. This differs from traditional lithium-ion batteries, which typically have a nominal ...



[Product Information](#)



[A Comprehensive Guide to LiFePO4 Voltage Chart , Renogy US](#)

This comprehensive guide will demystify the LiFePO4 voltage chart, explaining how to interpret voltage levels, maximize battery life, and optimize your energy storage system's performance.

[Product Information](#)



The Ultimate Guide to LiFePO4 Lithium Battery Voltage Charts

Renowned for their stability, safety, and extended cycle life, LiFePO4 batteries typically have a nominal cell voltage of 3.2 volts. In comparison, conventional lithium-ion batteries generally ...

[Product Information](#)



[Understanding Lithium Battery Voltage](#)

Understanding lithium battery voltage is crucial for selecting the ideal power source for your devices. Lithium battery voltage influences its energy capacity, charging ...

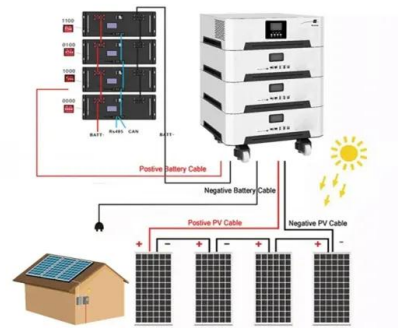
[Product Information](#)



[The Ultimate Guide to LiFePO4 Lithium Battery ...](#)

Renowned for their stability, safety, and extended cycle life, LiFePO4 batteries typically have a nominal cell voltage of 3.2 volts. In comparison, conventional ...

[Product Information](#)



The Definitive Guide to LiFePO4 Lithium Battery Voltage Charts

In this in-depth guide, we'll explore the details of LiFePO4 lithium battery voltage, giving you a clear insight into how to read and effectively use a LiFePO4 lithium battery ...

[Product Information](#)



[Lithium LiFePO4 Battery Voltage Charts For 12V.](#)

...

To help you out, we have prepared these 4 lithium voltage charts: 12V Lithium Battery Voltage Chart (1st Chart). Here we see that the 12V LiFePO4 battery ...

[Product Information](#)



12.8V 200Ah



[Understanding the Voltage of LiFePO4 Battery: A](#)

...

As a lithium iron phosphate battery expert, I will guide you through everything about LiFePO4 battery voltage characteristics. We'll explore the fundamentals ...

[Product Information](#)

Contact Us

For catalog requests, pricing, or partnerships, please visit:
<https://les-jardins-de-wasquehal.fr>