

# **Lithium battery cell number**





## Overview

---

Taller cells are assigned five-digit numbers, where the first two digits are the diameter in millimeters, followed by the last three digits indicating the height in tenths of millimeters. All these lithium cells are rated nominally 3 volts (on-load), with open-circuit voltage about 3.6 volts. Overview This is a list of the sizes, shapes, and general characteristics of some common primary and secondary in.

Coin-shaped cells are thin compared to their diameter. is usually stamped on the metal casing. The IEC prefix "CR" denotes lithium manganese dioxide chemistry. Since LiMnO<sub>2</sub> cel.

are generally not interchangeable with using a different chemistry, due to their higher voltage. Many are also available with that can increase th.

• • • • •

- IEC 60086-1: Primary batteries – Part 1: General
- IEC 60086-2: Primary batteries – Part 2: Physical and electrical specifications
- IEC 60086-3: Primary batteries – Part 3: Watch batteries.

How to calculate lithium cell count in a battery pack?

To calculate lithium cell count in a battery pack, use the formula: Total Voltage = Number of Cells x Nominal Voltage of Each Cell. 1. Understanding nominal voltage of lithium cells. 2. Identifying required total voltage for the application. 3. Considering parallel connections for capacity. 4.

What do the numbers on a lithium battery mean?

The numbers on a lithium battery provide important information about the battery's dimensions or capacity. For Cylindrical Batteries (e.g., 18650): The numbers refer to the battery's physical size. In "18650": 18 = Diameter of the battery in millimeters (18mm). 65 = Length of the battery in millimeters (65mm). 0 = Cylindrical shape.

How many cells are in a lithium ion battery?



Lithium batteries use multiple cells. For example, a lithium-ion battery has 3 cells for 11.1 volts, 4 cells for 14.8 volts, or 10 cells for 37 volts. Cells can be arranged in series to increase voltage or in parallel to boost capacity measured in amp-hours (Ah). This setup meets different energy storage needs.

How many volts is a lithium cell rated?

Taller cells are assigned five-digit numbers, where the first two digits are the diameter in millimeters, followed by the last three digits indicating the height in tenths of millimeters. All these lithium cells are rated nominally 3 volts (on-load), with open-circuit voltage about 3.6 volts.

How many cells in a 3.7V lithium ion battery?

The number of cells in a 3.7V lithium-ion battery can vary depending on the manufacturer and the specific battery model. However, most 3.7V lithium-ion batteries have between four and eight cells. So, Why Does the Number of Cells Matter?

Well, the more cells a battery has, the longer it will typically last before needing to be recharged.

What is a 12V lithium battery pack?

Most commonly, a 12V lithium battery pack is made up of four lithium-ion cells, each with a nominal voltage of 3.7V. This configuration allows the pack to reach a total nominal voltage of approximately 14.8V when fully charged and around 12V when discharged.



## Lithium battery cell number

---



### [How Many Cells Does a Battery Have \(Number of Cells Matter?\)](#)

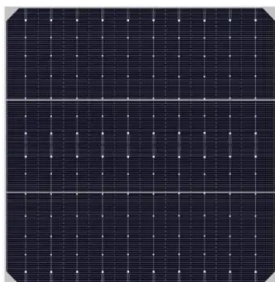
For example, a lead-acid battery has six cells, while a lithium-ion battery has four. The number of cells also determines the voltage of the battery - more cells mean more voltage.

### [Product Information](#)

### **How Many Cells in a Lithium Battery Pack? A Complete Guide to ...**

Most commonly, a 12V lithium battery pack is made up of four lithium-ion cells, each with a nominal voltage of 3.7V. This configuration allows the pack to reach a total ...

### [Product Information](#)



### **Lithium Battery Shipping Overview**

Lithium Battery Shipping Overview (also see 49CFR173.185) Lithium batteries are used in many electronic devices such as cameras, cell phones, laptop computers, medical equipment and ...

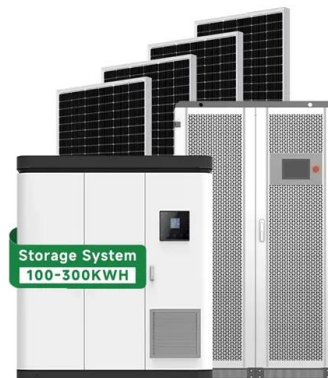
### [Product Information](#)

### [How to tell the letter and number shown on lithium-ion ...](#)

IEC61960 specifies the rules for cylindrical and square batteries as follows: Cylindrical lithium battery, 3 letters followed by 5 numbers. 3 letters, I ...



## [Product Information](#)



## [How Many Cells Are in a Lithium-Ion Energy Storage Battery?](#)

Learn how to calculate the number of cells in lithium-ion energy storage batteries, with practical examples and expert insights into configurations and applications.

## [Product Information](#)

## Battery nomenclature

The letters and numbers in the code indicate the number of cells, cell chemistry, shape, dimensions, the number of parallel paths in the assembled battery and any modifying letters ...

## [Product Information](#)



## FOREWORD

This Battery Information Factsheet (BIF) is intended to provide information for the safe handling, storage and transport of lithium batteries by professionals. It offers Good Practice Guidance ...

## [Product Information](#)



## What is the difference between 3 cells, 4 cells and 6 cells battery

The number of cells by itself does not have a lot of meaning, unless you are comparing cells with similar characteristics - in which case more cells means a heavier battery ...

[Product Information](#)



## [How many cells in a 48V lithium battery?](#)

To achieve 48V for specialized applications like electric vehicles or renewable energy systems, multiple cells must be connected in series. Want OEM lithium forklift batteries ...

[Product Information](#)



## [Meaning of Codes on Lithium Batteries](#)

The numbers on a lithium battery provide important information about the battery's dimensions or capacity. For Cylindrical Batteries (e.g., 18650): The numbers refer to the battery's physical size.

[Product Information](#)



## [How To Read A Lithium-Ion Battery Data Plate?](#)

Reading a lithium-ion battery data plate involves decoding key metrics like nominal voltage (e.g., 48V), capacity (Ah or Wh), and charge/discharge rates (C-rates).

[Product Information](#)



## How to tell the letter and number shown on lithium-ion battery cells?

IEC61960 specifies the rules for cylindrical and square batteries as follows: Cylindrical lithium battery, 3 letters followed by 5 numbers. 3 letters, I means built-in lithium ...

### [Product Information](#)



### [Understanding Battery Labeling: What the Letters on ...](#)

Battery labels encode chemistry (e.g., "CR" for lithium), size (like "2032" indicating 20mm diameter x 3.2mm height), voltage, capacity, and ...

### [Product Information](#)

## Lithium-ion batteries explained

Lithium-ion batteries - also called Li-ion batteries - are used by millions of people every day. This article looks at what lithium-ion batteries are, gives an evaluation of their ...

### [Product Information](#)

### Lithium battery parameters

Product capacity: 100Ah

Product size: 135\*197\*35mm

Product weight: 1.82kg

Product voltage: 3.2V

internal resistance: within 0.5



## LITHIUM BATTERIES 101

Introduction A brief history and overview of advanced battery chemistry: The first lithium-ion battery prototype Popular lithium (ion) cell types: What are batteries made of? What are lead ...

### [Product Information](#)

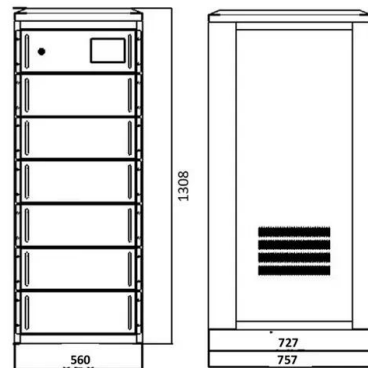




### [How to Calculate the Number of Cells in a Battery](#)

The number of cells in a 12V battery pack can vary depending on the manufacturer and the intended use of the battery. A typical 12V lithium-ion battery pack may contain ...

[Product Information](#)



### List of battery sizes

Taller cells are assigned five-digit numbers, where the first two digits are the diameter in millimeters, followed by the last three digits indicating the height in tenths of millimeters. All ...

[Product Information](#)

## Contact Us

For catalog requests, pricing, or partnerships, please visit:  
<https://les-jardins-de-wasquehal.fr>