

# **Is there a limit to the inverter connected to photovoltaic panels**





## Overview

---

Can I connect more solar panels to an inverter?

It's not a good idea to connect more solar panels to an inverter than it's rated for. But if the total power output of the solar panels matches or is within the maximum rated capacity of the inverter, then it's safe and efficient.

How many solar panels can an inverter handle?

To effectively determine the number of solar panels an inverter can handle, you must first assess the size of your solar panel array. The overall capacity of your solar installation is defined by the wattage and number of panels. You can expect that the inverter should match or slightly exceed the combined wattage produced by the solar panels.

What happens if a solar inverter connects too many solar panels?

A: Connecting too many solar panels to a single inverter can lead to overloading, which can damage the inverter and result in decreased efficiency. Overloading occurs when the total output of the solar panels exceeds the inverter's rated capacity, leading to overheating, shutdowns, and potential long-term failures.

What is the maximum input voltage of a solar panel inverter?

The maximum input voltage of a solar panel inverter determines how you should set up your solar panels. Here's an example: If an inverter has a maximum input voltage of 600V and each panel produces 40V, you could connect up to 15 panels in series ( $15 \times 40V = 600V$ ).

Do solar inverters have a rated capacity?

Ratings on solar inverters often give the false impression that you can connect as many panels as you like, as long as you're under the stated power output. This leads to a misconception that exceeding the rated capacity is acceptable if you distribute loads wisely.



How many solar panels can a string inverter hold?

Most string inverters have 3 inputs that can hold 8 panels each for 24 in total. The specifications will vary so make sure to check the inverter before connecting any solar panel. Generally, an inverter can handle up to 30% more power than its rating. Given that solar panels do not always produce at peak power, this should not be an issue.



## Is there a limit to the inverter connected to photovoltaic panels

---



### Size your solar system

In most areas there are limits on the size of the rooftop solar system inverter that can be connected to the grid and/or the amount of electricity that can be exported to the grid from ...

[Product Information](#)

### DEYE INVERTER HELP DESK PH , Hello! Is there a way to set ...

Hello! Is there a way to set the charging limit from PV for batteries connected to a Deye 50kw inverter to less than 100% (for example, 95%)? We are using SWA HV batteries, and we've ...

[Product Information](#)



### [How many V should solar panels be connected in series?](#)

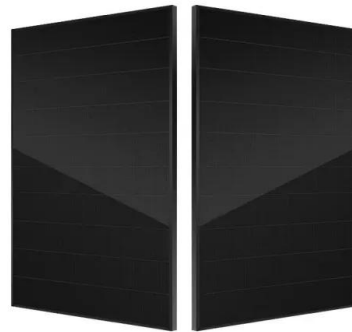
While it may be theoretically possible to string together numerous panels, the practical limit is defined by safety considerations and operational effectiveness. Typically, ...

[Product Information](#)

### [How many solar panels can an inverter handle](#)

A: Yes, there are different types of inverters, and they do affect the number of solar panels you can connect. The most common types are string inverters, microinverters, ...

[Product Information](#)



### Grid power limitation

Here you can decide whether you have a grid limitation, and specify its value. The limitation may be defined: either at the inverter level: the inverter power is limited to the rated value, and the ...

[Product Information](#)

### [How Many Solar Panels Can I Connect to My Inverter?](#)

Adding solar panels is an obvious solution, but how many of these PV modules can your inverter handle? A solar array can be up to 130% of the inverter capacity.

[Product Information](#)



### What Happens If You Connect Too Many Solar Panels To An Inverter?

Connecting too many solar panels to an inverter can lead to inefficiencies, reduced system lifespan, or even damage. This article explores what happens when an inverter is ...

[Product Information](#)

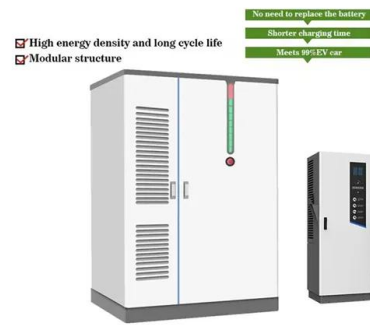




## Can you add more panels to an already maxed out inverter? : r

Voltage is the only thing that can break your inverter. Secondary constraints are the number of Mppt strings your inverter has and the max current of the strings. If the panels current exceeds ...

[Product Information](#)



## [Is it Safe to Have Too Many Solar Panels on an Inverter?](#)

It's not a good idea to connect more solar panels to an inverter than it's rated for. But if the total power output of the solar panels matches or is within the maximum rated ...

[Product Information](#)

## [How many solar panels can I use with a particular inverter?](#)

To determine the maximum number of solar panels you can use with an inverter, take the inverter's maximum input voltage and divide by your solar panel's Open Circuit ...

[Product Information](#)



## [Grid-Tie Inverter Theory and Operation Confusion](#)

Each GTI has limits as to what can be connected to it in terms of input. There is a Voltage and Amperage range for inputs. Let's say the inverter has 2 inputs rated at 360v ...

[Product Information](#)



## I've been told my maximum solar system size is 5kW. Is that ...

The system size limit is almost always based on the rated inverter 'AC output'. So you can usually add 6.6kW of panels to a 5kW inverter and still respect the 5kW system size limit.

[Product Information](#)



## [Parallel Connected Solar Panels For Increased Current](#)

How to Connect Solar Panels in Parallel  
Photovoltaic solar panels generate a current when exposed to sunlight (irradiance) and we can increase the current ...

[Product Information](#)



## [How Many Solar Panels Can I Connect to an Inverter?](#)

What happens if I connect too many solar panels to an inverter? If you exceed the inverter's capacity, it "clips" or limits extra power, which reduces efficiency during peak sunlight.

[Product Information](#)



## [Power Factor and Grid-Connected Photovoltaics](#)

Power Factor and Grid Connected PV Systems  
Most grid connected PV inverters are only set up to inject power at unity power factor, meaning they only produce active power. In effect this ...

[Product Information](#)





### [Inverter Topologies for Grid Connected Photovoltaic ...](#)

Abstract - The increase in power demand and rapid depletion of fossil fuels photovoltaic (PV) becoming more prominent source of energy. Inverter is fundamental component in grid ...

#### [Product Information](#)



- ☒ IP65/IP55 OUTDOOR CABINET
- ☒ OUTDOOR CABINET WITH AIR CONDITIONER
- ☒ OUTDOOR ENERGY STORAGE CABINET
- ☒ 19 INCH



### [How Many Solar Panels Can I Connect to an Inverter? A...](#)

This guide will discuss the factors that determine how many solar panels can be connected to an inverter, such as inverter specifications, wiring configurations, and the use of charge controllers.

#### [Product Information](#)

### [Can you limit the PV power that enters on to the inverter?](#)

After that is it because you have different amounts of panels on the inverters and they can't share properly and just double check your current sharing cables make sure they ...

#### [Product Information](#)



## Contact Us

For catalog requests, pricing, or partnerships, please visit:  
<https://les-jardins-de-wasquehal.fr>