

# Is the battery inverter safe





## Overview

---

Are power inverters safe to use in cars?

While power inverters are generally safe to use, there are certain risks associated with using them in cars that you should be aware of. One of the potential risks of using power inverters in cars is that they can drain the car battery if used for an extended period.

Can you use a power inverter while a car is off?

However, using a power inverter while the car is turned off can quickly drain the battery and cause it to discharge beyond 12 volts, which is considered dead and requires jump-starting. Therefore, it is important to choose a power inverter that is appropriate for the car's battery capacity and to use it responsibly. What is a Power Inverter?

.

Can a power inverter damage a car?

Another risk of using power inverters in cars is that they can overload the car's electrical system. This can happen if the inverter is used to power devices that require more power than the car's electrical system can handle. In extreme cases, this can cause damage to the car's electrical system and even start a fire.

Can a car inverter drain a battery?

Use the inverter with the car running: To avoid draining your car's battery, it's important to use the inverter while the car is running. Do not use the inverter when the car is turned off. Do not exceed the inverter's wattage rating: Make sure you do not exceed the inverter's wattage rating.

Can you use an inverter for a car battery?

Let's say you have a standard 12V car battery rated at 70Ah. That means it



can, in theory, deliver 70 amps for one hour—or 7 amps for 10 hours. But using an inverter for car changes the math a bit due to energy conversion losses (typically 10–15%). Let's do a quick example:.

Do you need a deep cycle battery for a car power inverter?

Many RVers and off-grid travelers install a separate deep-cycle battery specifically for their car power inverters. These batteries are designed to be discharged and recharged repeatedly without damage. There are compact battery monitors that let you keep tabs on your charge level in real-time.



## Is the battery inverter safe

---



### Can a Power Inverter Drain Your Car Battery? Risks, Damage, ...

A power inverter can drain a car battery if left on with the engine off. The inverter uses power from the battery to run the electrical system. If it runs while the car is parked, it can ...

[Product Information](#)

### Solar Panel Inverter Distance: How Far Can They Be from Your ...

This makes them perfect for setups where the inverter and battery are far from the main electrical panel, such as a guest house 100 feet away. With two Victron Quattro inverters, your system ...

[Product Information](#)



### Applications



### "Low Battery Charge" HELP

The battery monitoring system on the car uses a sensor (shunt) connected to the battery negative terminal to monitor current charged or drawn from the battery. This is ...

[Product Information](#)

### Are Power Inverters Bad For Your Car? Here's What You Need ...

While power inverters are generally safe to use, there are certain risks associated with using them in cars that you should be aware of. One of the potential risks of using power ...



## [Product Information](#)



### [Can a Car Inverter Damage My Car Battery?](#)

Yes, a car inverter can damage your car battery --but only if it's used incorrectly or beyond the battery's capacity. When used properly and matched to the right power demands, ...

#### [Product Information](#)



### **Can a Car Inverter Damage My Car Battery? Risks, Safety Tips, ...**

No, using a car inverter does not typically damage your car battery if used properly. Car inverters convert the vehicle's DC (direct current) power into AC (alternating ...



#### [Product Information](#)



### **Can a Power Inverter Ruin Your Car Battery? Risks, Damage, ...**

A power inverter can impact your car battery. While in use, it draws excess power without harm. However, when the car is off, the inverter can drain the battery's energy reserve. ...

#### [Product Information](#)



## Inverter for Car: Everything You Need to Know Before You Plug In

Is it safe to use a 2000 watt car inverter? 10. Can I leave an inverter plugged in all the time? When you're on the road and need a way to power your laptop, charge your phone, ...

[Product Information](#)



[Inverters: Friend Or Foe To Your Car? , ShunAuto](#)

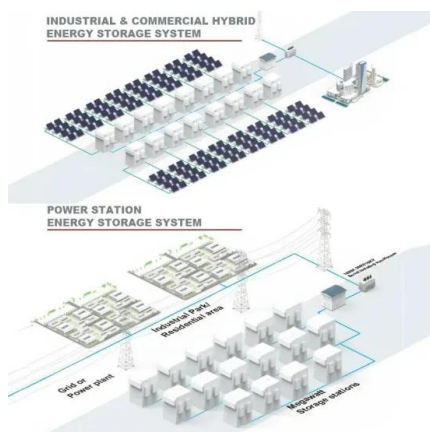
2 days ago · Car inverters are devices that convert DC power from a car battery to AC power, allowing you to power devices such as laptops, phones, and even TVs from your car. They are ...

[Product Information](#)

[Frequently Asked Questions About Power Inverters , DonRowe](#)

Frequently Asked Questions about Power Inverters. Get answers to all of you power inverter questions including what a power inverter is and what it can be used for, how to size and ...

[Product Information](#)



## Battery Recycling for Businesses

Battery Recycling for Businesses Use the chart below to determine how to handle used batteries generated by your business. Batteries that are considered hazardous must be recycled or ...

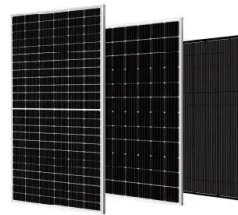
[Product Information](#)



## Low battery charge Power save mode

My 2011 s60 Volvo has shown Low Battery since I purchased the car in August 2023. I have a new battery in the car since September,2024. The car starts up okay at this ...

[Product Information](#)



[Safe Enclosure recommendations? , DIY Solar Power Forum](#)

I have seen a couple of completely burned homes in this forum caused by the battery/inverter/etc I can't help but wonder if anyone out there has fire-proofed the crap out ...

[Product Information](#)

[Will a Power Inverter Drain My Battery? Here's the Answer!](#)

Inverters rated under 400W are generally safe for short-term use on a standard car battery. For higher wattage or extended use, consider a deep-cycle battery or keep the engine ...

[Product Information](#)



## Can an Inverter Damage a Battery? Risks, Safety Concerns, and

Yes, an inverter can damage a battery. The potential for damage primarily stems from improper usage or incompatible specifications. Inverters convert direct current (DC) from ...

[Product Information](#)





### [Will a Power Inverter Drain My Battery? Here's the Answer!](#)

This post shows if a power inverter will drain your car battery, how to prevent it, and recommends the best inverter, Topbull, to offer the best protection!

#### [Product Information](#)



### [Low battery charge error . Volvo V40 Forums](#)

Hello everyone, I just bought my first car, a 2014 Volvo V40 T3, and a warning appears on the dashboard that says 'low battery charge.' The car is recently purchased and is ...

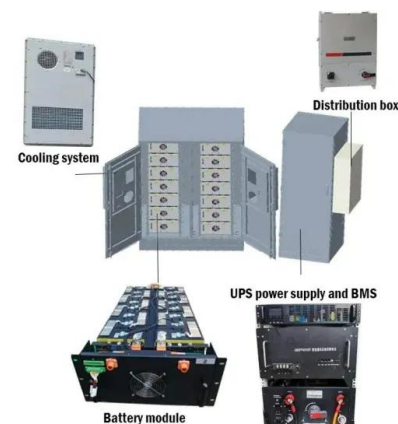
#### [Product Information](#)



### **Household Battery Recycling**

Household battery recycling locations Lead-acid batteries, or "automotive type batteries," are banned from disposal. Consumers may bring lead-acid batteries to any Wisconsin retailer that ...

#### [Product Information](#)



### [Will a Power Inverter Damage My Car? - leaptrend](#)

When used correctly, car power inverters are safe. Most modern inverters (like those from trusted brands such as Leaptrend) include built-in protections: Overload protection: ...

#### [Product Information](#)





### [Will a Car Power Inverter Drain the Battery?](#)

While the inverter does draw power from the battery, understanding how inverters work, the loading power of devices, and the condition of your car battery can help mitigate the ...

### [Product Information](#)



## Contact Us

---

For catalog requests, pricing, or partnerships, please visit:  
<https://les-jardins-de-wasquehal.fr>