

# **Huawei inverter grid-connected power limit**





## Overview

---

If a single inverter is connected to the power grid, a Smart Dongle must be used for networking. On the home screen, choose Power adjustment > Feed-in at limited current. The default value is Disable. If this parameter is set to Disable, feed-in at limited current will be unavailable. Can the inverter be extended with the Huawei battery?

Thanks to the integrated 800V high-voltage battery connection, the inverter can be extended with the HUAWEI Battery. The optional HUAWEI Smart Meter is connected via the integrated RS485 interface and provides information about house consumption and grid feed-in.

What is a Huawei inverter?

Huawei inverters are becoming a benchmark for solar energy in residential and commercial applications. Huawei is a well-known brand in the solar energy sector.

How to set a grid connection with limited power (kW)?

Set grid connection with limited power (kW) parameters and click Submit. Set this parameter to Grid connection with limited power (kW). Set this parameter to Smart meter. Otherwise, the function will not take effect. When the inverter has no output power, set this parameter to Positive if the active power reading of the power meter is positive.

How to enable grid connection with limited power parameters?

To enable this function, you need to set power meter, inverter, and grid connection with limited power parameters. This section describes how to set grid connection with limited power parameters. Before setting the parameters, ensure that a power meter has been connected to the SmartLogger.

How do I export rated power to the power grid?

The inverter can export its rated power to the power grid. Set this parameter



to SDongle/SmartLogger when the SmartLogger1000A is connected. If multiple inverters are cascaded, set this parameter to SDongle/SmartLogger. If there is only one inverter, set this parameter to Inverter.

What if the inverter has no output power?

When the inverter has no output power, set this parameter to Positive if the active power reading of the power meter is positive. Otherwise, set this parameter to Reverse. Total power: controls the total power at the grid-tied point to limit the power fed to the power grid.



## Huawei inverter grid-connected power limit

---



### Detailed explanation of Huawei photovoltaic inverter parameters

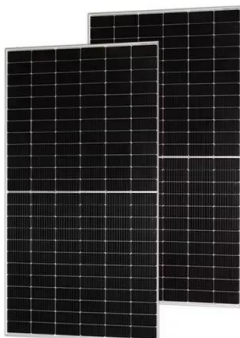
This document provides information about the ModBus protocol used in Huawei inverters, and can be used to regulate and restrict follow-up third-party integration R&D and customizations.

[Product Information](#)

### Grid-tied Point Control

Many regions impose a limit on the feed-in power of a power generation system. Therefore, a power meter is required to measure the power at the grid-tied point to control the output of the ...

[Product Information](#)



### The SUN2000-40KTL displays power limit for grid-tied inverters

According to onsite feedback, the inverter AC and DC input voltage is normal, but the output power of the same PV array is less than 1 kW and the status is On-grid: Power limit.

[Product Information](#)

### [\(Optional\) Setting Limited Feed-in Parameters](#)

**Function Description** If surplus PV energy is fed to the grid, the limited feed-in parameters can be set to ensure that the feed-in power is within the range specified by the grid company.

[Product Information](#)



### SmartLogger1000 User Manual

Scenario with a circuit breaker: When the countercurrent feeding into the power grid cannot be eliminated by sending a command from the SmartLogger to lower the inverter output power, ...

[Product Information](#)



### [Huawei - Smart-Meter Integration, Zero-Feed-In Control](#)

This Frankensolar Tech Tip shows how the Huawei CCS Smartmeter can be connected to the Huawei single phase inverters. Some installations require the inverter to limit ...

[Product Information](#)



### Setting Feed-in at Limited Current

After the user changes the maximum feed-in current, the inverter will adjust the current to a value within the range limit. If the grid supply current exceeds the specified value by 2%, the inverter ...

[Product Information](#)





### [Setting the Mode for the Grid-tied ESS](#)

For example, when the PV system generates 8 kW of power, the 5KTL inverter feeds the maximum output power of 5.5 kW to the grid and charges the ESS at 2.5 kW. When the ...

### [Product Information](#)



### **Case Study on the SUN2000 Not Automatically Connects to the Grid ...**

According to parameters, the voltage of the power grid in this area is lower than the lower limit of the inverter power grid reconnection voltage. As a result, the device fails to ...

### [Product Information](#)

### [Grid Connection with Limited Power \(kW\)](#)

This section describes how to set grid connection with limited power parameters. Before setting the parameters, ensure that a power meter has been connected to the ...

### [Product Information](#)



### **The SUN2000-40KTL displays power limit for grid-tied inverters**

According to onsite feedback, the inverter AC and DC input voltage is normal, but the output power of the same PV array is less than 1 kW and the status is On-grid: Power limit.

### [Product Information](#)



## Grid-tied Point Control

Many regions impose a limit on the feed-in power of a power generation system. Therefore, the power at the grid-tied point should be measured to control the output of the inverter in real ...

[Product Information](#)



[Huawei photovoltaic grid-connected inverter efficiency](#)

Huawei SUN2000-100KTL-M2 three-phase PV string inverter of the Smart PV Controller series with 10 strings and 2 MPPT, 100,000W nominal power, max efficiency 98.6%, for grid ...

[Product Information](#)



## Huawei Photovoltaic Grid-Connected Inverter Parameters: The ...

As global energy prices fluctuate, Huawei's grid-tied inverters have become the go-to solution for commercial installations, particularly after their Q1 2025 firmware update addressing dynamic ...

[Product Information](#)



## Quick Setting APP

Connect the server of the management system. Set router parameters and after confirm switch the phone This step is for installer who have registered the management system. Set the grid ...

[Product Information](#)



## Contact Us

---

For catalog requests, pricing, or partnerships, please visit:  
<https://les-jardins-de-wasquehal.fr>