

How to prevent communication base station flow batteries





Overview

Why do cellular base stations have backup batteries?

[.] Cellular base stations (BSs) are equipped with backup batteries to obtain the uninterruptible power supply (UPS) and maintain the power supply reliability. While maintaining the reliability, the backup batteries of 5G BSs have some spare capacity over time due to the traffic-sensitive characteristic of 5G BS electricity load.

Which battery is best for telecom base station backup power?

Among various battery technologies, Lithium Iron Phosphate (LiFePO₄) batteries stand out as the ideal choice for telecom base station backup power due to their high safety, long lifespan, and excellent thermal stability.

What makes a telecom battery pack compatible with a base station?

Compatibility and Installation Voltage Compatibility: 48V is the standard voltage for telecom base stations, so the battery pack's output voltage must align with base station equipment requirements. Modular Design: A modular structure simplifies installation, maintenance, and scalability.

How do you protect a telecom base station?

Backup power systems in telecom base stations often operate for extended periods, making thermal management critical. Key suggestions include:
Cooling System: Install fans or heat sinks inside the battery pack to ensure efficient heat dissipation.

Why is backup power important in a 5G base station?

With the rapid expansion of 5G networks and the continuous upgrade of global communication infrastructure, the reliability and stability of telecom base stations have become critical. As the core nodes of communication networks, the performance of a base station's backup power system directly impacts network continuity and service quality.

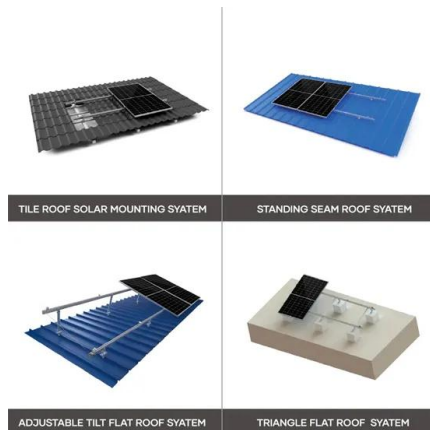


Does a standby battery responding grid scheduling strategy perform better than constant battery capacity?

In addition, the model of a base station standby battery responding grid scheduling is established. The simulation results show that the standby battery scheduling strategy can perform better than the constant battery capacity. Content may be subject to copyright.



How to prevent communication base station flow batteries



Selection and maintenance of batteries for communication base stations

Focused on the engineering applications of batteries in the communication stations, this paper introduces the selections, installations and maintenances of batteries for communication ...

[Product Information](#)

What Are the Key Considerations for Telecom Batteries in Base ...

Telecom batteries for base stations are backup power systems that ensure uninterrupted connectivity during grid outages. Typically using valve-regulated lead-acid ...

[Product Information](#)



[How To Extend Service Life Of Battery In Telecom ...](#)

The battery compartment places the battery in a small environment with high cleanliness and no pollution (some base stations use fresh air systems to ...

[Product Information](#)

Understanding the Base Station Subsystem: A Comprehensive ...

In the world of mobile telecommunications, understanding the Base Station Subsystem (BSS) is paramount for grasping how our everyday communications function ...





[Product Information](#)



(PDF) Dispatching strategy of base station backup power supply

Overall, this study provides a clear approach to assess the environmental impact of the 5G base station and will promote the green development of mobile communication facilities.

[Product Information](#)

Selection and maintenance of batteries for communication base ...

Focused on the engineering applications of batteries in the communication stations, this paper introduces the selections, installations and maintenances of batteries for communication ...

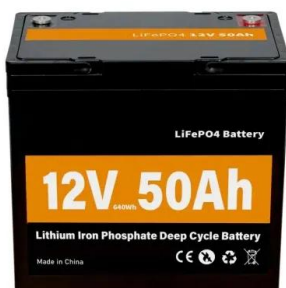
[Product Information](#)



Communication base station lithium batteries , Huijue Group E-Site

Communication Base Station Lithium Battery As 5G deployment accelerates globally, have you considered why communication base station lithium batteries now consume 23% of operators' ...

[Product Information](#)





[Preventing theft and vandalism on the mobile base station](#)

As the expertised manufacturers of enclosures, it's important for us to improve safety of the base station and to protect critical equipment like batteries, copper cables, and diesel. Here are five ...

[Product Information](#)



Communication base station backup batteries(Liechtenstein) ...

Communication base station backup batteries are used in telecommunications to ensure uninterrupted power supply to base stations. They are critical for maintaining signal strength ...

[Product Information](#)

[Communication base station emergency energy supply ...](#)

A technology for energy supply and communication base stations, applied in the field of communication base stations, can solve problems such as affecting work efficiency, ...

[Product Information](#)



[Optimization of Communication Base Station Battery ...](#)

In the communication power supply field, base station interruptions may occur due to sudden natural disasters or unstable power supplies. This work studies the optimization of ...

[Product Information](#)



WHAT FACTORS AFFECT COMMUNICATION COVERAGE OF A BASE STATION

What is the traditional configuration method of a base station battery? The traditional configuration method of a base station battery comprehensively considers the importance of the 5G base ...

[Product Information](#)



[Communication Base Station Power Backup Units](#)

When typhoons knock out power grids or extreme temperatures strain energy systems, communication base station power backup units become the last line of defense for connectivity.

[Product Information](#)

What Are the Critical Aspects of Telecom Base Station Backup Batteries?

Telecom base station backup batteries are essential for ensuring uninterrupted communication by providing reliable, long-lasting power during outages. Critical aspects ...

[Product Information](#)



Communication base station

Through the use of tower storage batteries, communication base stations can effectively reduce the additional costs caused by grid fluctuations, power outages or electricity bill spikes.

[Product Information](#)



How Do Telecom Batteries Support Critical Infrastructure During ...

Telecom batteries are essential for supporting critical infrastructure during power outages by providing immediate, reliable backup power that ensures uninterrupted ...

[Product Information](#)



Cell tower Battery thefts: a global problem with a proven solution

Network operators and service providers have tried a variety of methods like increasing security cameras, hiring guards, installing battery safes, and even using heavier ...

[Product Information](#)



Understanding Backup Battery Requirements for Telecom Base Stations

Telecom base stations require reliable backup power to ensure uninterrupted communication services. Selecting the right backup battery is crucial for network stability and ...

[Product Information](#)



Communication Base Station Energy Storage , Huijue Group E-Site

Decoding the Energy Storage Paradox
Fundamentally, the base station energy storage challenge stems from conflicting operational requirements. Lithium-ion batteries - while efficient - struggle ...

[Product Information](#)





How Are Telecom Batteries Revolutionizing Grid-Independent Communication?

Telecom batteries enable reliable power for communication networks in off-grid or unstable grid areas. Lithium-ion batteries, with high energy density and longevity, are replacing ...

[Product Information](#)



Standard 20ft containers



Standard 40ft containers

Contact Us

For catalog requests, pricing, or partnerships, please visit:
<https://les-jardins-de-wasquehal.fr>