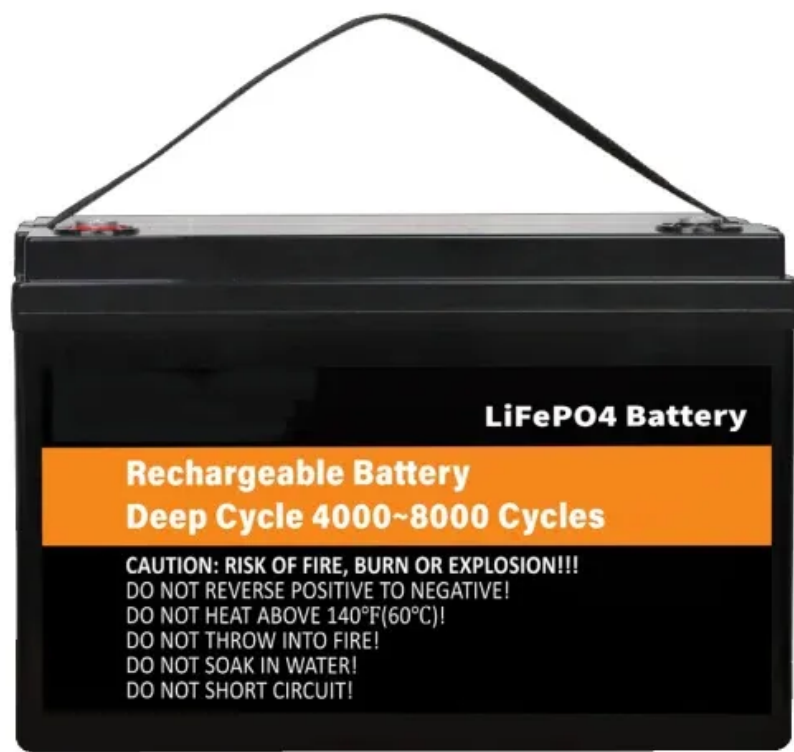


How to operate the battery replacement at a communication base station





Overview

How do you replace a battery in a base station?

To replace batteries in a SimpliSafe base station, rotate the base counterclockwise (CCW) to remove it, then remove the batteries and replace them while ensuring the (-) and (+) orientation. When disposing of NiMH batteries, they should be recycled.

How many batteries does the base station take?

The Base Station takes four (4) 1.2V, 1300mAh nickel-metal hydride (NiMH) rechargeable batteries. Regular alkaline batteries should never be inserted into the Base Station, as they may damage the device. Once you have acquired the necessary NiMH rechargeable batteries, you can follow the steps below to replace them:.

What makes a telecom battery pack compatible with a base station?

Compatibility and Installation Voltage Compatibility: 48V is the standard voltage for telecom base stations, so the battery pack's output voltage must align with base station equipment requirements. Modular Design: A modular structure simplifies installation, maintenance, and scalability.

Can you put alkaline batteries in a base station?

NEVER insert regular alkaline batteries into the Base Station as they may damage the device. Plug your Base Station back into power. Was this helpful?

Does your Keypad look like the one pictured to the left?

.

What batteries do I need to replace my SimpliSafe base station?

To replace the batteries in your SimpliSafe base station, you need QTY (4) AA nickel-metal hydride (NiMH) rechargeable batteries. Do not use Alkaline or any



other non-NiMH batteries. The batteries supplied from SimpliSafe are rated at 1000mAh capacity (very low).

What type of batteries are used in the base station?

Inside the bottom of the base station are QTY (4) AA nickel-metal hydride rechargeable batteries (abbreviated NiMH or Ni-MH). Note, being RECHARGEABLE, there is a good chance that if you just keep the power on for several hours, they will be recharged.



How to operate the battery replacement at a communication base s



[Equipment for Your Ham Radio Station](#)

Battery backup: In case of power outages or when operating in remote locations, having battery backup for your ham radio station can be invaluable. In summary, setting up an amateur radio ...

[Product Information](#)

What Are the Critical Aspects of Telecom Base Station Backup ...

Critical aspects include battery chemistry, capacity, cycle life, safety features, thermal management, and intelligent battery management systems. These factors collectively ...



[Product Information](#)



[UPS Batteries in Telecom Base Stations - leagend](#)

When designing a UPS battery system for a telecom base station, engineers must address several critical factors to ensure reliability, efficiency, and longevity.

[Product Information](#)

[Upgrading or Replacing Your Ring Alarm Base Station](#)

This replacement process will remove your old Base Station from your Ring account after it successfully saves all of your devices and settings. This will remove all of your information and ...



[Product Information](#)



[How To Replace Base Station Batteries , SimpliSafe ...](#)

Regular alkaline batteries should never be inserted into the Base Station, as they may damage the device. Once you have acquired the necessary NiMH ...

[Product Information](#)



Selection and maintenance of battery for communication base ...

Focused on the engineering applications of batteries in the communication stations, this paper introduces the selections, installations and maintenances of batteries for communication ...

[Product Information](#)



How To Replace Base Station Batteries , SimpliSafe Support Home

You will likely never need to replace your Base Station's batteries as they are rechargeable and meant to last. The batteries in the Base Station are Nickel Metal Hydride (NiMH) rechargeable ...

[Product Information](#)

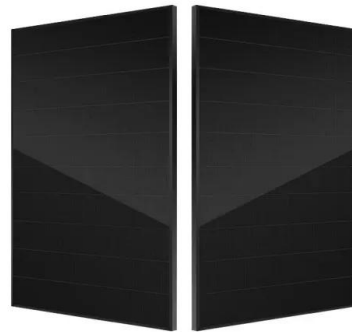




?Changing batteries in base station , SimpliSafe Support Home

We can replace those batteries with actual NiMH rechargeables at no cost! It's actually pretty simple. You have to remove the power cord which will reveal a single screw on ...

[Product Information](#)



Energy storage(KWH)

102.4kWh

Nominal voltage(Vdc)

512V

Outdoor All-in-one ESS cabinet



Selection and maintenance of batteries for communication base ...

This article focuses on the engineering application of the battery in the power supply system of the communication base station, and focuses on the selection, installation and maintenance of the ...

[Product Information](#)

[Communication base station battery maintenance equipment](#)

The necessary professional configuration includes three types of constant current chargers, single battery retention capacity detectors, and connected battery detectors.

[Product Information](#)



Selection and maintenance of battery for communication base station

Focused on the engineering applications of batteries in the communication stations, this paper introduces the selections, installations and maintenances of batteries for communication ...

[Product Information](#)





Base station operation guidelines

Make sure that the GNSS receiver does not lose power. To operate continuously for more than a few hours without loss of power at the base station, provide external power. Sources of ...

[Product Information](#)



[Comprehensive Guide to Telecom Batteries](#)

Telecom batteries play a crucial role in powering equipment, supporting backup systems, and facilitating smooth operations. This comprehensive guide will delve into the ...

[Product Information](#)



How To Replace Base Station Batteries , SimpliSafe Support Home

Regular alkaline batteries should never be inserted into the Base Station, as they may damage the device. Once you have acquired the necessary NiMH rechargeable batteries, you can ...

[Product Information](#)



Telecom Base Station Backup Power Solution: Design Guide for ...

Designing a 48V 100Ah LiFePO4 battery pack for telecom base stations requires careful consideration of electrical performance, thermal management, safety protections, and ...

[Product Information](#)





[How to Replace Your ADT TS Base Station Back Up Battery](#)

If you have an ADT Total Security - TSSC - TS Base Station and the back up battery is low, you will want to replace it. You can purchase one here at this link and then watch this video to see how

[Product Information](#)



Contact Us

For catalog requests, pricing, or partnerships, please visit:
<https://les-jardins-de-wasquehal.fr>