

# **How to determine the base station during communication**





## How to determine the base station during communication

---



### [1.3.6: The Global Positioning System \(GPS\)](#)

The base station calculates its position from satellite signals and compares this location to the known location. The base station broadcasts the range errors they're seeing from GPS ...

### [Product Information](#)

### [Always-On Emergency Comms., Emergency Communication](#)

Streamline your emergency communication with secure alerts that are impossible to miss. Quickly and easily communicate during any emergency or other disruptive event.

### [Product Information](#)



### **Describe the purpose of Base Station Identity Code (BSIC) in ...**

The Base Station Identity Code (BSIC) in GSM (Global System for Mobile Communications) networks is a unique identifier associated with each cell or sector within a ...

### [Product Information](#)



### **Base station**

In the area of wireless computer networking, a base station is a radio receiver/transmitter that serves as the hub of the local wireless network, and may also be the gateway between a wired ...

### [Product Information](#)



[Solved Suppose that a mobile base station is moving ...](#)

English Communications Communications questions and answers Suppose that a mobile base station is moving along a straight line between the base stations ...

[Product Information](#)



[How do communication base stations work](#)

They allow mobile devices to connect with the network, enabling voice calls, text messages, and data transfers. In this article, we will explore how communication base stations work and their ...

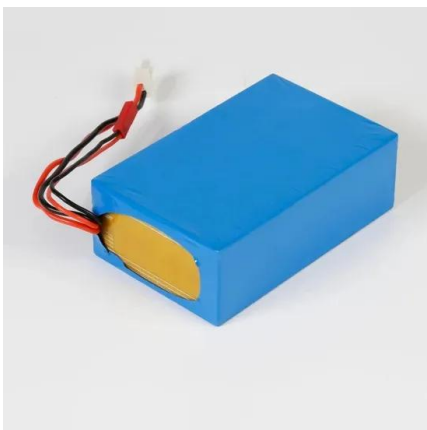
[Product Information](#)



[What Are Base Station Antennas? Complete Guide](#)

In modern telecommunications systems, the base station antenna stands out as an undeniable and crucial component to facilitate our daily communication from voice calls to ...

[Product Information](#)





### [Synchronizing Plantronics Headset With Base Station](#)

Here's a step-by-step guide to pairing your Plantronics headset with the base station:  
Prepare the Devices: Ensure that both the headset and the base station are fully ...

[Product Information](#)



### [The Base Station in Wireless Communications: The Key to ...](#)

Equipped with an electromagnetic wave antenna, often placed on a tall mast, the base station enables communication between mobile terminals (such as mobile phones or ...

[Product Information](#)

### [User Guidelines for Single Base Real Time GNSS Positioning](#)

Classical (single base) Real-Time Kinematic (RTK) positioning or "RT" positioning as commonly shortened, is a powerful application employing GNSS technology to produce and collect three ...

[Product Information](#)



### **Lithium Solar Generator: \$150**



### **Base Station System Structure**

The intent of this section is to explore the role of base stations in communications systems, and to develop a reference model that can be used to describe and compare base station software ...

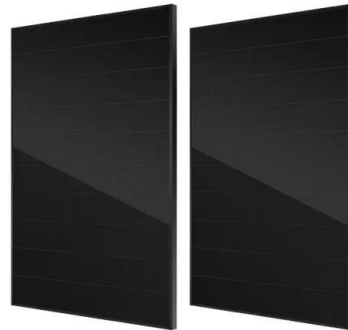
[Product Information](#)



## [INTRODUCTION TO CELLULAR MOBILE RADIO ...](#)

The base stations consist of several transmitters and receivers, which simultaneously handle full duplex communications and generally have towers that support several transmitting and ...

### [Product Information](#)



## **Complete Guide to GNSS RTK: Base Station, Rover, VRS, and ...**

An RTK system consists of at least two components: a base station (a stationary receiver with precisely known coordinates) and a rover receiver. The rover is a mobile device ...

### [Product Information](#)



## [Base Station's Role in Wireless Communication Networks](#)

The capacity and efficiency of a base station determine how many devices can connect simultaneously and how fast data is transmitted. Advanced base stations with higher ...

### [Product Information](#)



## [RTK and the Federal Communications Commission \(FCC\)](#)

RTK also requires a real-time wireless connection be maintained between the base station and the rover. The radio receiving antennas for the rovers will either be built into the GPS/GNSS ...

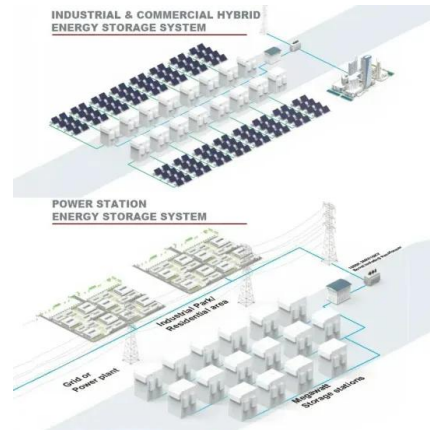
### [Product Information](#)



## Unit 6?Transmitting and Receiving Devices

In Amateur Radio data communications, however, the information instead of telephone lines. You type information into your transmitter sends it out over the air. Another amateur radio station ...

### Product Information



## VARIOUS STRATEGIES FOR 4G CELLULAR TOWER

...

communication traffic. But up to now (to our knowledge), the design of the base station placement has always focused on the consideration of the reception quality and doesn't take into account ...

### Product Information

## Contact Us

For catalog requests, pricing, or partnerships, please visit:  
<https://les-jardins-de-wasquehal.fr>