

# **How much energy storage should a 25kw inverter be equipped with**





## Overview

---

How big should a solar inverter be?

Generally, it's recommended to size the inverter to 80-100% of the DC system's rated capacity. Before determine the inverter size, the most important thing is to calculate your average daily power consumption (kWh) and calculate your solar panel array size to match your power consumption. You could follow our to make this estimation.

What is a recommended inverter power range?

By inputting your panel's rated power and number of panels, the calculator produces a recommended inverter power range that aligns with 80-100% of your system's total DC capacity. This approach ensures that your inverter is neither under-sized—risking energy losses and performance issues—nor over-sized, which can lead to unnecessary costs.

Can a 25kW solar array be put on an inverter?

A 25kW solar array can be put with an inverter with an AC output of 18.75kW. What you "can" do is not what you "should" do. All inverters have different specs. And based on those specs you might be able to put a LOT more panels on than the rated inverter capacity. That does not mean you should.

How many kW can a solar inverter generate?

Total capacity =  $20 \times 500 = 10,000$  watts or 10 kW The industry standard suggests that the inverter's capacity should be between 80% to 125% of the solar panels' capacity. For example, if your panels generate 10 kW: Minimum inverter size =  $10,000 \times 0.8 = 8$  kW Maximum inverter size =  $10,000 \times 1.25 = 12.5$  kW.

How many inverters do I Need?

The number of inverters you need depends on the system design: For small systems (less than 5 kW), a single inverter is usually sufficient. For larger



systems, multiple inverters or a string inverter with optimizers may be required.

What is a solar inverter sizing calculator?

A solar inverter sizing calculator is a tool used to determine the appropriate size of a solar inverter for your solar power system based on the total power consumption of connected appliances and the size of your solar panel array. It ensures the inverter can handle the peak loads efficiently.



## How much energy storage should a 25kw inverter be equipped with

---



### Best Solar Inverter Solutions For Maximum Energy Efficiency And ...

6 hours ago· A solar inverter with battery storage capabilities can provide several benefits, including increased energy independence, backup power during outages, and optimized ...

[Product Information](#)

### Solar and Storage Sizing Calculator

The solar panel and storage sizing calculator allows you to input information about your lifestyle to help you decide on your solar panel and solar storage (batteries) requirements.

[Product Information](#)



### [Complete Guide to Inverter Batteries - NPP POWER](#)

What exactly is an inverter battery? Inverter batteries perform several critical functions: Energy Storage They store electrical energy for future use, offering backup power ...

[Product Information](#)

### [Solar Inverter Sizing Calculator: Important Guide](#)

This comprehensive guide will walk you through solar inverter sizing, explain its importance, and help you understand how to use a solar inverter sizing calculator effectively.

[Product Information](#)



### [Inverter power and energy storage calculation](#)

In Srne guide, we'll walk you through how to calculate the right inverter size, whether you're considering a hybrid inverter, an off-grid inverter, or integrating with residential

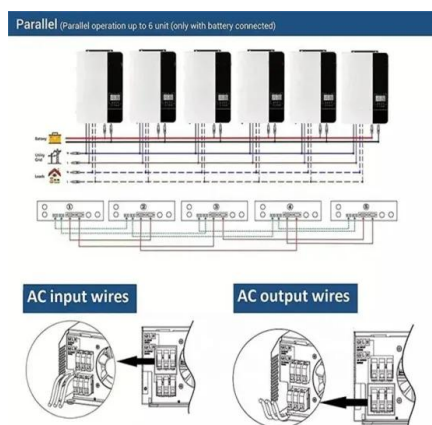
### [Product Information](#)



### [What Size Inverter Do I Need to Run a House?](#)

In this article, we'll walk through the basics of inverter sizing and help you choose the right output level for your home - especially when integrating it with a storage solution like ...

### [Product Information](#)



### [The Complete Off Grid Solar System Sizing Calculator](#)

The calculator below takes these variables, along with factors like operating temperature and system efficiency, into account, and uses your daily energy consumption to ...

### [Product Information](#)



## [50 to 200kW Battery Energy Storage Systems](#)

Discover the MEGATRON Series - 50 to 200kW Battery Energy Storage Systems (BESS) tailored for commercial and industrial applications. These systems are install-ready and cost-effective, ...

### [Product Information](#)



## **SUNSYNK 25KW SOLAR HYBRID INVERTER**

Solar energy storage inverter in the park Solar park, a large-scale solar panels installation, harnesses the sun's power to generate clean, renewable electricity on a massive scale. These ...

### [Product Information](#)

## [25KW Inverter Solar Deal - Smksolar Shop](#)

Unlock the power of renewable energy with our 25KW Inverter Solar Deal. This comprehensive solar package is designed to meet the energy demands of larger households and businesses, ...

### [Product Information](#)



50KW modular power converter



## [Hanchu Three Phase Hybrid Inverter 25kW](#)

How to Use the Tables Determine Your Energy Storage Needs (kWh): Think about how much energy you want to store. For example: If you consume around 100kWh per day, look for a ...

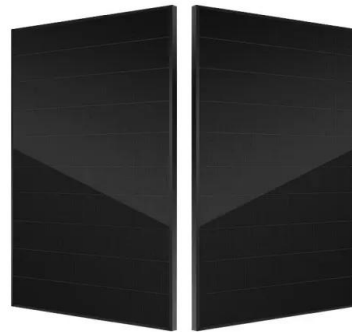
### [Product Information](#)



## The Ultimate Guide to 25kW Off-Grid Solar Inverters: Everything ...

For a 25kW system, a hybrid inverter may be the best option as it can work with both the solar panels and the battery bank, providing greater flexibility and control over the system. Another ...

[Product Information](#)



### 25kW Three-phase All-in-One Residential Energy Storage System

Hinen A Series H25T is a 25kW three-phase all-in-one ESS with 120% oversized PV input, four MPPTs, and 10ms rapid backup switching. It offers easy installation and reliable residential ...

[Product Information](#)

### [25kW Solar System Information - Facts & Figures](#)

Whether or not you need a 25kW solar system will depend on many things. If you are a Commercial customer and you use between 98.5kWhs and 151kWhs then a 25kW solar ...

[Product Information](#)



### [How much energy storage inverter stores. NenPower](#)

Energy storage inverters can store energy equivalent to multiple kilowatt-hours, ranging from 1,000 to 10,000 watts depending on the inverter capacity and battery compatibility.

[Product Information](#)



### [Choosing the Right Inverter: What Size Inverter Do I Need?](#)

In this article, we will delve into this topic and shed light on the importance of choosing the appropriate inverter size to maximize the efficiency and power yield of your solar ...

#### [Product Information](#)



### [Inverter Size Calculator - self2solar](#)

Optimize your solar system by calculating the ideal inverter size. Simply input panel specs for a recommended inverter power range that ensures efficiency and safety today!

#### [Product Information](#)

## Contact Us

For catalog requests, pricing, or partnerships, please visit:  
<https://les-jardins-de-wasquehal.fr>