

# **How much electricity does a 5G base station consume in a year**





## Overview

---

One 5G base station is estimated to consume about as much power as 73 households (6), and 3x as much as the previous generation of base stations (5), (7). When base stations, data centers and device.

How much power does a 5G station use?

The power consumption of a single 5G station is 2.5 to 3.5 times higher than that of a single 4G station. The main factor behind this increase in 5G power consumption is the high power usage of the active antenna unit (AAU). Under a full workload, a single station uses nearly 3700W.

Are 5G base stations causing more energy consumption?

However, Li says 5G base stations are carrying five times the traffic as when equipped with only 4G, pushing up power consumption. The carrier is seeking subsidies from the Chinese government to help with the increased energy usage.

Why does 5G use more power than 4G?

The data here all comes from operators on the front lines, and we can draw the following valuable conclusions: The power consumption of a single 5G station is 2.5 to 3.5 times higher than that of a single 4G station. The main factor behind this increase in 5G power consumption is the high power usage of the active antenna unit (AAU).

How much power will a 5G base station use in 2025?

The Small Cell Forum predicts the installed base of small cells to reach 70.2 million in 2025 and the total installed base of 5G or multimode small cells in 2025 to be 13.1 million. "A 5G base station is generally expected to consume roughly three times as much power as a 4G base station.

Which network consumes the most power in 5G?

Also, NextGalliance published a report with the below figure clearly illustrates that the RAN consumes the most power. Although RAN power consumption is



reduced in 5G, it is still over 50% of the total 5G network infrastructure consumption. Another trend worth noting is the rise in data center power consumption in 5G.

Why does a ran consume more power than a 4G network?

Despite improvements in energy efficiency, the RAN continues to consume more power than any other part of the network. This is due largely to new technology like mmWave transceivers and MIMO antennas, all of which require more power. Power Consumption of 4G and 5G Networks How can 5G reduce power consumption Vs. 4G



## How much electricity does a 5G base station consume in a year

---



### [Front Line Data Study about 5G Power Consumption](#)

The power consumption of a single 5G station is 2.5 to 3.5 times higher than that of a single 4G station. The main factor behind this increase in 5G power consumption is the high power ...

### [Product Information](#)

### [A technical look at 5G energy consumption and performance](#)

In this post, we explore the energy saving features of 5G New Radio and how this enables operators to build denser networks, meet performance demands and maintain low 5G ...

### [Product Information](#)



### [The Long Road to Sobriety: Estimating the Operational ...](#)

The modern end-user devices with newer mobile generations like 5G are becoming more and more energy-efficient in terms of energy per transmitted bit. However, these energy gains can ...

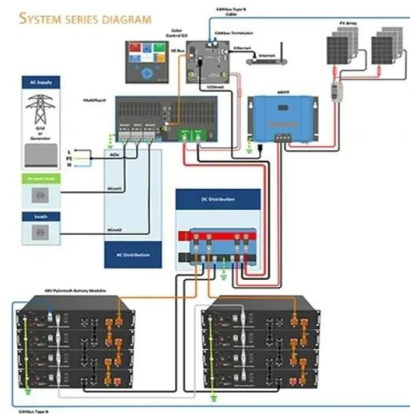
### [Product Information](#)

### [5G base station saves energy and reduces consumption](#)

In 5G communications, base stations are large power consumers, and about 80% of energy consumption comes from widely dispersed base stations. It is predicted that by ...



## [Product Information](#)



## [What is the Power Consumption of a 5G Base Station?](#)

These 5G base stations consume about three times the power of the 4G stations. The main reason for this spike in power consumption is the addition of massive MIMO and ...

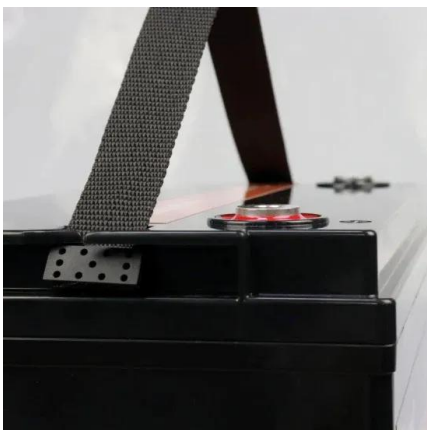
## [Product Information](#)



## **5G base stations use a lot more energy than 4G base stations: MTN**

A typical 5G base station consumes up to twice or more the power of a 4G base station, writes MTN Consulting Chief Analyst Matt Walker in a new report entitled " Operators ...

## [Product Information](#)



## [Energy-efficient 5G for a greener future](#)

Compared to earlier generations of communication networks, the 5G network will require more antennas, much larger bandwidths and a higher density of base stations. As a ...

## [Product Information](#)



## A picture tells you why 5G base stations consume so much power

However, while 5G base stations are blooming everywhere, the saying that the energy consumption of 5G base stations has become a veritable "electric tiger" is also ...

[Product Information](#)



## Power Consumption of 4G and 5G Networks

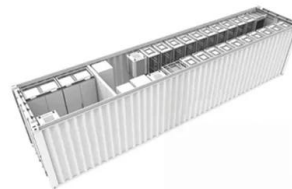
With many of the core network services moving to the cloud in 5G, we see a reduction in the energy consumption of core network elements from 4G to 5G and an increase ...

[Product Information](#)

## Energy Consumption of 5G, Wireless Systems and ...

"A 5G base station is generally expected to consume roughly three times as much power as a 4G base station. And more 5G base stations are needed to cover ...

[Product Information](#)



- ✓ IP65/IP55 OUTDOOR CABINET
- ✓ OUTDOOR MODULE CABINET
- ✓ OUTDOOR ENERGY STORAGE CABINET
- ✓ 19 INCH

## 5G base stations consume too much electricity. How can we ...

Through smart circuit breaker equipment, 5G energy saving is combined with AI artificial intelligence to improve the accuracy of power consumption prediction for each base ...

[Product Information](#)



## [How Much Power Does 5G Base Station Consume?](#)

Have you ever wondered how much energy our hyper-connected world is consuming? 5G base stations, the backbone of next-gen connectivity, now draw 3-4 times more power than their 4G ...

### [Product Information](#)



## **How much power does 5G consume?**

One 5G base station is estimated to consume about as much power as 73 households (6), and 3x as much as the previous generation of base stations (5), (7). When base stations, data centers ...

### [Product Information](#)

## **Why does 5g base station consume so much power and how to ...**

According to industry insiders' estimates, 100000 5G base stations require at least 2 billion yuan in electricity bills per year, so 8 million 5G base stations require at least 160 billion ...

### [Product Information](#)



## **What is 5G Energy Consumption?**

5G Base Station Power Consumption: With each base station carrying at least 5X more traffic and operating over more frequency bands, 5G base station power consumption is at least twice ...

### [Product Information](#)



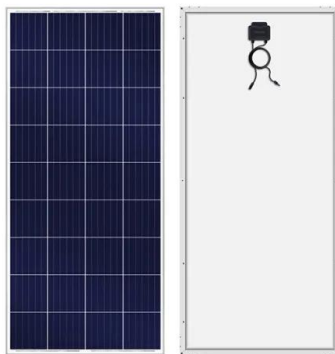




## [Carbon emissions of 5G mobile networks in China](#)

Here we develop a large-scale data-driven framework to quantitatively assess the carbon emissions of 5G mobile networks in China, where over 60% of the global 5G base ...

### [Product Information](#)



## **Energy Consumption of 5G, Wireless Systems and the Digital ...**

"A 5G base station is generally expected to consume roughly three times as much power as a 4G base station. And more 5G base stations are needed to cover the same area," -IEEE ...

### [Product Information](#)

## **What is 5G Energy Consumption?**

The 5G network is a dynamic system that consumes energy continually and responds to spikes in network activity. Over 70% of this energy is consumed by RAN antennas, radio units, and ...

### [Product Information](#)



## [5G Base Station Growth: How Many Are Active?\\_PatentPC](#)

Energy efficiency improvements in 5G base stations are projected to reduce power consumption by 15-20% per year One of the biggest challenges with 5G is its high power consumption, but ...

### [Product Information](#)





## Does 5G require electricity?

One 5G base station is estimated to consume about as much power as 73 households (6), and 3x as much as the previous generation of base stations (5),(7). Takedown request , View ...

[Product Information](#)



## 5G base stations consume so much power that operators are ...

Tower told News that the current average power consumption of a single tenant of a 5G outdoor base station is about 3.8KW, which is more than three times that of a 4G base station. The ...

[Product Information](#)

## Modelling the 5G Energy Consumption using Real-world Data: Energy

This paper proposes a novel 5G base stations energy consumption modelling method by learning from a real-world dataset used in the ITU 5G Base Station Energy Consumption Modelling ...

[Product Information](#)



## Contact Us

For catalog requests, pricing, or partnerships, please visit:  
<https://les-jardins-de-wasquehal.fr>