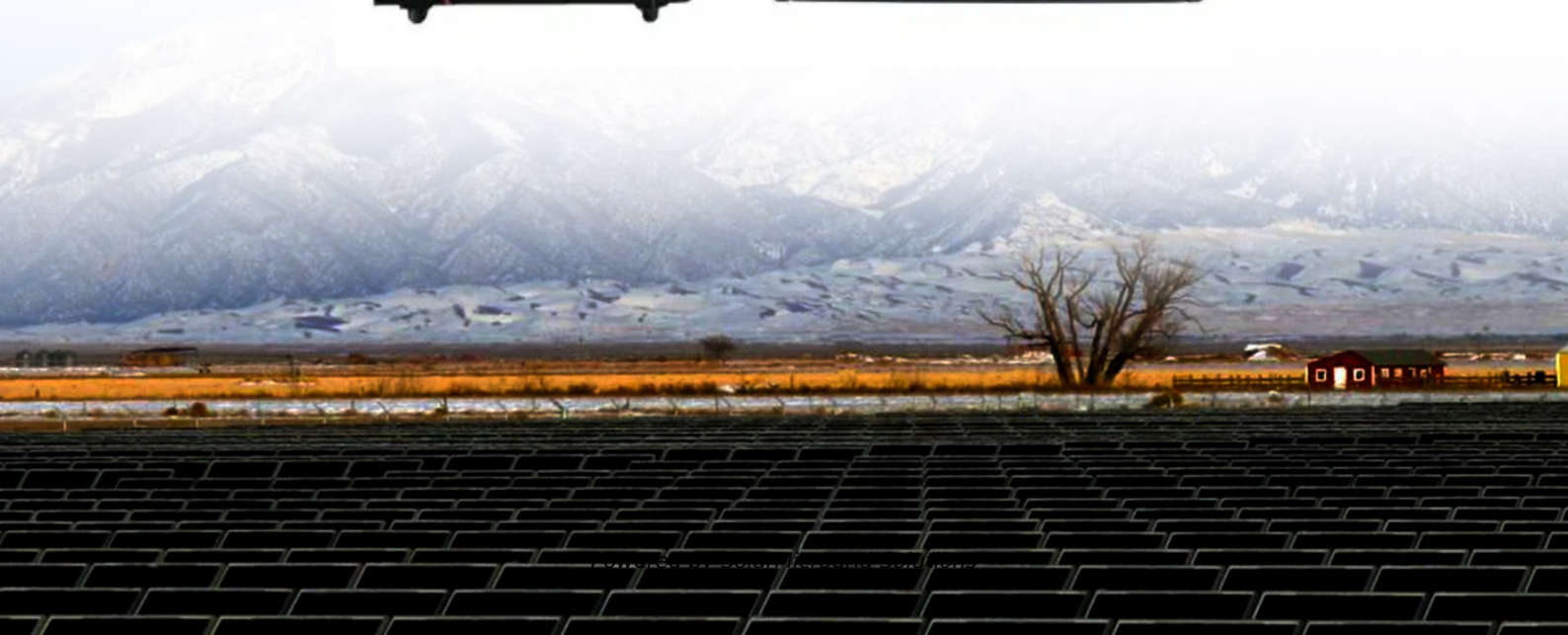


How much does a 20-cell lithium battery pack weigh





Overview

A typical home battery pack can weigh anywhere from 20 to 100 kilograms, depending on the lithium battery size and capacity. When you choose a battery, always consider battery sizing for your needs. The right lithium battery weight ensures your device works well without being too heavy or bulky. Are lithium ion batteries lightweight?

Generally, the Lithium-ion batteries are lightweight but as the size of the machine that the battery has to operate increases, the battery weight increases as well. From the shape of the Lithium-ion batteries to their size and weight, every feature matters a lot.

How much does a lithium ion battery weigh?

An electric car that needs 100 kWh of energy would require 14,285 cells to store its charge in these cells alone at 95 percent efficiency. Weighing in at around 50 grams each, this totals up to 714 kilograms (1,574 lbs). Lithium Ion Battery Weight Calculator Lithium ion batteries can weigh as little as 3g/Wh, or as much as 8g/Wh.

How much does a battery pack weigh?

For example, the Tesla Model 3 has a battery pack that weighs about 480 kilograms (1,060 pounds). In contrast, the battery in a typical smartphone weighs approximately 50 to 70 grams (0.11 to 0.15 pounds). Several factors affect the weight of lithium-ion batteries, including the materials used, design, and capacity.

What is the weight breakdown of a lithium ion battery pack?

The weight breakdown of a Lithium ion battery pack is as follows (Kokam data): Cell - 48% Packaging - 25% Other (cables, connectors, contactors, etc.) - 9% Cooling System - 5% Battery Management System - 5% Hardware/Support Structure - 4% Safety Systems - 2% Miscellaneous (fans, electrical components) - 2% Conclusion.



How much does a 12V lithium battery weigh?

Most RV users prefer 12V 100Ah lithium batteries, which weigh around 25 to 30 pounds. Depending on your power needs, you may install multiple batteries in parallel. Boats benefit greatly from the reduced weight of lithium batteries. A 12V 50Ah battery is light enough to carry by hand and potent enough for trolling motors.

How do you calculate the weight of a lithium ion battery pack?

The first step in calculating the weight of a lithium ion battery pack is to determine its capacity in amp-hours (Ah). This is typically provided by the product specification for off-the-shelf batteries or by dividing the total energy (in Watt-hours) by the nominal voltage if designing custom packs.



How much does a 20-cell lithium battery pack weigh



[Weight Of Batteries - The Complete Guide - Measuring Stuff](#)

Understanding the factors influencing lithium car battery weight is crucial for both consumers and manufacturers as they navigate the evolving landscape of electric mobility.

[Product Information](#)

How Heavy Is a Lithium Car Battery? Surprising Facts Revealed

Factors Affecting the Weight of Lithium-Ion Batteries The weight of a lithium-ion battery is influenced by several factors, including: Cell size and configuration: The size and ...



[Product Information](#)



[How Much Does A Lithium Car Battery Weigh? Unveiled](#)

Understanding the factors influencing lithium car battery weight is crucial for both consumers and manufacturers as they navigate the evolving landscape of electric mobility.

[Product Information](#)

[AA Battery Weight: How Much Do Batteries Weigh?](#)

AA batteries typically weigh between 20-30 grams (0.7-1.05 ounces), depending on the brand and type of battery. This weight can slightly vary based on the battery's ...



[Product Information](#)



[Lithium Ion Battery Weight-Calculator and Density](#)

This lithium ion battery weight calculator is an extremely lightweight and simple-to-use tool, which will help you find the approximate weight of a li-ion battery based on its specific ...

[Product Information](#)



[How Much Do Li-Ion Batteries Weigh? Factors & Data](#)

The weight of a lithium-ion battery varies based on its capacity, chemistry, and design. For instance, a typical AA lithium-ion battery weighs about 20 grams, while larger ...

[Product Information](#)



[How Much Does A Lithium Car Battery Weigh? Unveiled](#)

2. Cell Size and Configuration The physical dimensions and arrangement of individual cells within the battery pack significantly impact its weight. Larger cells generally ...

[Product Information](#)





[Calculating Lithium-Ion Battery Weight: A Guide for ...](#)

The weight of a lithium-ion battery depends on several factors, including its capacity, chemistry, and construction. In this article, LiPol will guide you ...

[Product Information](#)



[What is the weight of lithium-ion battery per kWh?](#)

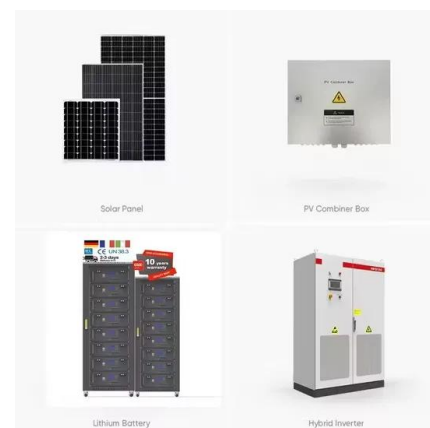
For the vehicles that have a higher capacity say 60 to 100 kWh, the battery pack weight might increase to 385 to 544 kg approximately. The increased weight and capacity of ...

[Product Information](#)

[Weight Of Batteries - The Complete Guide - Measuring Stuff](#)

Alkaline AA batteries weigh about .8 ounces or about 22.5 grams, while lithium AA batteries weigh about .5 ounces or just over 14 grams. Rechargeable batteries are heavier, so ...

[Product Information](#)



Battery pack calculator : Capacity, C-rating, ampere, charge and

Battery calculator : calculation of battery pack capacity, c-rate, run-time, charge and discharge current. Online free battery calculator for any kind of battery : lithium, Alkaline, LiPo, Li-ION, ...

[Product Information](#)



Lithium-Ion Battery Weight: How Much Does It Weigh and Its ...

A lithium-ion battery typically weighs between 40-50 grams, depending on its size and capacity. Larger batteries used in electric vehicles or energy storage systems can weigh ...

[Product Information](#)



[Lithium-Ion Battery Pack Prices Hit Record Low of \\$139/kWh](#)

BloombergNEF's annual battery price survey finds a 14% drop from 2022 to 2023 New York, November 27, 2023 - Following unprecedented price increases in 2022, battery ...

[Product Information](#)

[Understanding Lithium-Ion Battery Weight and Energy Density](#)

For electric vehicles, lithium battery weight increases with capacity. A Tesla Model S 85 kWh battery weighs about 540 kilograms. The Nissan Leaf 40 kWh battery weighs ...

[Product Information](#)



[How Much Does a Prius Battery Weigh? Key Factors and...](#)

The weight of a Toyota Prius hybrid battery varies by model year and type. First-generation (1997-2003) Nickel-Metal Hydride (NiMH) batteries weigh approximately 118 lbs, while fourth ...

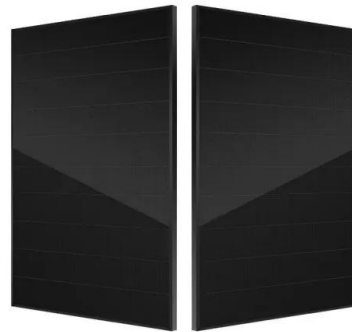
[Product Information](#)



[How much does the energy storage battery pack weigh?](#)

Lithium-ion battery packs tend to be lighter than lead-acid options, generally ranging from 30 to 300 pounds for residential use, with industrial packs weighing much more, ...

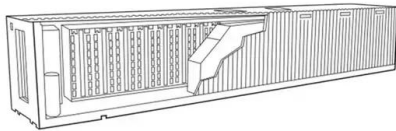
[Product Information](#)



Lithium Ion Batteries , Buy Online

Buy Lithium Ion Batteries Online. Enjoy safe shopping online with Jumia. Widest Range of Lithium Ion Batteries in Nigeria. Best Price in Nigeria Fast Delivery & Cash on delivery Available.

[Product Information](#)



Calculating Lithium-Ion Battery Weight: A Guide for Custom Lithium

The weight of a lithium-ion battery depends on several factors, including its capacity, chemistry, and construction. In this article, LiPol will guide you through the process of calculating the ...

[Product Information](#)



[Lithium Battery Weight Chart: From Small to Large](#)

This article provides a comprehensive, size-by-size breakdown of lithium battery weight, helping you confidently choose the right battery for your application. Part 1.

[Product Information](#)





Contact Us

For catalog requests, pricing, or partnerships, please visit:
<https://les-jardins-de-wasquehal.fr>