

How many watts of power does a photovoltaic panel have per square meter





Overview

However, on average, a solar panel will produce around 100 watts of electricity per square meter (10 square feet). So, for example, a typical residential solar panel measuring 1.6 meters by 0.8 meters (around 5 feet by 2.5 feet) would produce around 160 watts of electricity under ideal conditions. What is solar panel watts per square meter (W/M)?

Solar panel watts per square meter (W/m) measures the power output of a solar panel based on its size. Compare solar panels to see which generates most electricity per square meter. A higher W/m value means a solar panel produces more power from a given area. This can help you determine how many solar panels you need for your energy needs.

How much power does a solar panel produce?

But on average, a typical solar panel will produce around 100 watts of power per square foot. So if you have a 1000 square foot roof, you could potentially generate 100 kilowatts of power from your solar panels. That's enough to power 10 homes! And if you have a 100 amp hour battery, your 800 watt panel will recharge it in about 8 hours.

How do you calculate solar panel output in watts per square meter?

The formula to calculate the solar panel output and how much energy solar panels produce (in watts) using watts per square meter is as follows: Solar Panel Output (W) = Watts per Square Meter (W/m²) × Area of Solar Panel (m²).

How many Watts Does a solar panel use?

Here, the amount of the force of the electricity is represented by volts. The aggregate amount of energy used is expressed in amps (amperes). Output ratings on most solar panels range between 250 watts to 400 watts. 1. Number of Solar Cells The most common categorization of solar cells is in 60-cell solar panels and 72-cell solar panels.



What is solar panel efficiency?

Solar panel efficiency is crucial for a solar power system's success. High-efficiency panels convert more sunlight into electricity, boosting overall output. To measure this efficiency, use solar panel Watts per square meter (W/m). This metric shows how much power a solar panel produces per square meter of surface area under standard conditions.

What does wattage mean on a solar panel?

Generally, they are referring to the wattage, power output, and capacity of a solar panel. Standardized residential solar panels on the market are quoted to generate averagely between 250 and 400 watts an hour. Typical domestic solar panel systems are rated to produce power ranging from 1 KW to 4 KW.



How many watts of power does a photovoltaic panel have per square



[Solar Panel Watts Per Square Foot: 'We \(Finally\) Did The Math'](#)

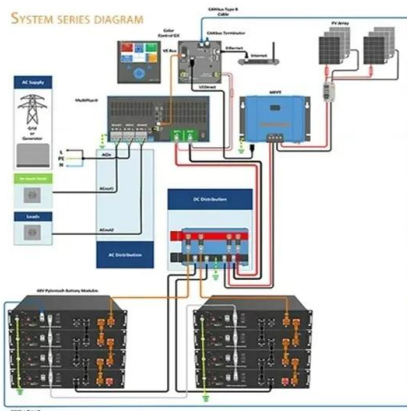
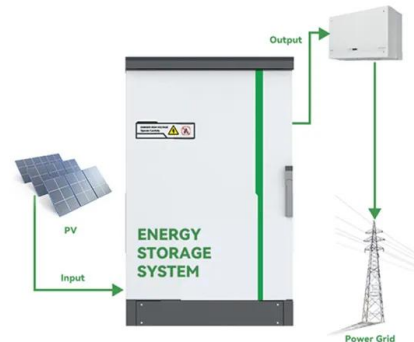
There is a lot of disagreement on how many watts can solar panels produce per square foot. Some say as little as 10 watts per square foot; others say it's 20+ watts per square foot.

[Product Information](#)

[Solar Panel Watts Per Square Meter Explained](#)

To measure this efficiency, use solar panel Watts per square meter (W/m). This metric shows how much power a solar panel produces per square meter of surface area under standard conditions.

[Product Information](#)



[Watts Per Square Meter Solar Panel - The Go-to Guide](#)

Watts per square meter (W/m^2) is the power density of sunlight falling on a given area of solar panels. In the context of solar panels, it refers ...

[Product Information](#)

[Solar Power per Square Meter Calculator](#)

Power of Panel (Watt Peak): Solar panels are marked with watt peak (Wp), and this is the amount of output the panels should produce in ideal conditions. Your solar panel will ...

[Product Information](#)



Solar Panel Output per Square Meter: Efficiency Factors & Future ...

When panel efficiency reaches 30%, a 100m² roof could generate 50,000kWh/year - enough to power 20 average homes. The solar revolution isn't coming; it's already here. Solar panels ...

[Product Information](#)

[How Many Watts Does A Solar Panel Produce](#)

How do you determine how much electricity A solar panel Produces? Solar panels differ in manufacturing, efficiency, and output, so it is very difficult to exactly state how many ...

[Product Information](#)



[How Much Power Do Solar Panels Produce Per Square Feet](#)

The average watts per square foot produced by solar panels is 17. 25 watts per square foot, with Tesla roof panels being slightly above average (8. 9+). A single square mile ...

[Product Information](#)





[How Much Power Can One Solar Panel Produce? \(Full Answer\)](#)

If you have a solar panel that's 1 square meter in size, it will produce about 200 watts of electricity per day. This means that you would need about 5 panels to generate 1 kilowatt-hour (kWh) of ...

[Product Information](#)



How many watts per square meter is a solar panel? , NenPower

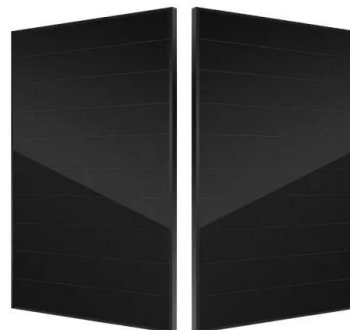
The average power output of a solar panel is approximately 150 to 400 watts per square meter, depending on various factors including the technology used and the angle of ...

[Product Information](#)

[How many watts is a square meter of solar panel? , NenPower](#)

1. The power output of a solar panel per square meter typically ranges from 150 to 200 watts, which can be influenced by various factors such as efficiency, orientation, and ...

[Product Information](#)



[Calculate Solar Panel kWp & KWh \(KWh Vs. KWp + Meanings\)](#)

Let's say 1,000-watts per square meter of sunlight is hitting your area, and if you have a 1 square meter panel, you'll end up with 1,000-watts exactly. If you have a 200 kWp ...

[Product Information](#)



[How Many Watts Per Square Foot Of Solar Panel?](#)

This means that for every square meter of solar panel, you can expect to generate approximately 150 watts of power. If you convert this to square feet, that works out to 15 watts ...

[Product Information](#)



[How Much Power \(Watts\) does a Solar Panel Produce?](#)

Usually, the typical amount can be 1,000 watts of sunlight per square meter of the panel. As we have mentioned before, average domestic solar panels hold a capacity ranging from 1,000 ...

[Product Information](#)

[How Much Energy Do Solar Panels Produce Per Square Foot?](#)

However, on average, a solar panel will produce around 100 watts of electricity per square meter (10 square feet). So, for example, a typical residential solar panel measuring 1.6 ...



[Product Information](#)



[Watts Per Square Meter Solar Panel - The Go-to Guide](#)

Watts per square meter (W/m^2) is the power density of sunlight falling on a given area of solar panels. In the context of solar panels, it refers to the amount of electrical power a ...

[Product Information](#)



[How Much Power \(Watts\) does a Solar Panel Produce?](#)

Usually, the typical amount can be 1,000 watts of sunlight per square meter of the panel. As we have mentioned before, average domestic solar panels hold a ...

[Product Information](#)



Contact Us

For catalog requests, pricing, or partnerships, please visit:
<https://les-jardins-de-wasquehal.fr>