

How many square meters does 100 000 watts of solar energy cover





Overview

A solar power per square meter calculator takes details regarding these factors and then gives the accurate output generated by the solar panel per square meter.

What is solar panel watts per square meter (W/M)?

Solar panel watts per square meter (W/m) measures the power output of a solar panel based on its size. Compare solar panels to see which generates most electricity per square meter. A higher W/m value means a solar panel produces more power from a given area. This can help you determine how many solar panels you need for your energy needs.

How much energy does a solar panel produce per square meter?

Given Egypt's high solar irradiance levels, which can reach up to 2200 kWh/m² annually, the potential power output per square meter of a solar panel can be quite significant. For a solar panel with an efficiency of 18%, this translates to an annual energy production of about 396 kWh/m².

How do you calculate solar panel output in watts per square meter?

The formula to calculate the solar panel output and how much energy solar panels produce (in watts) using watts per square meter is as follows: Solar Panel Output (W) = Watts per Square Meter (W/m²) × Area of Solar Panel (m²).

What is a solar power per square meter calculator?

It also includes wiring, inverter, charge controller, and battery bank (if used). A solar power per square meter calculator takes details regarding these factors and then gives the accurate output generated by the solar panel per square meter. After this, it's time to learn about solar panel output calculators.

What is solar energy production per square meter (W/m2)?

It is often expressed in units of watts per square meter (W/m²) and is used to



evaluate the performance of different solar energy systems. The solar energy production per square meter is determined by the amount of solar energy that is received by the solar panel or array, and the efficiency of the solar panel or array.

How many Watts Does a solar panel use?

Here, the amount of the force of the electricity is represented by volts. The aggregate amount of energy used is expressed in amps (amperes). Output ratings on most solar panels range between 250 watts to 400 watts. 1.

Number of Solar Cells The most common categorization of solar cells is in 60-cell solar panels and 72-cell solar panels.



How many square meters does 100 000 watts of solar energy cover



[Total Area Required for Solar Panel Installation Calculator](#)

To start, it's essential to know typical panel sizes, wattages, and efficiencies used in residential, commercial, and utility-scale installations. Below are comprehensive tables with ...

[Product Information](#)

How many watts of photovoltaic solar energy per square meter

Photovoltaic solar energy can generate between 150 to 200 watts per square meter under optimal conditions. To elaborate, various factors influence this output, including ...

[Product Information](#)



[How many square miles of solar panels would it take ...](#)

Have you ever wondered how many square miles of solar installations it would take to power the entire United States? The answer may be smaller than you ...

[Product Information](#)

[How many square meters is one watt of solar energy?](#)

Solar irradiance, defined as the power per unit area received from the sun, plays a direct role in determining how many square meters are equivalent to one watt of energy.



[Product Information](#)



Watts Per Square Meter Solar Panel

In this comprehensive guide, we'll delve into the intricacies of watts per square meter for solar panels, exploring what they are, how they work, and why they matter in solar ...

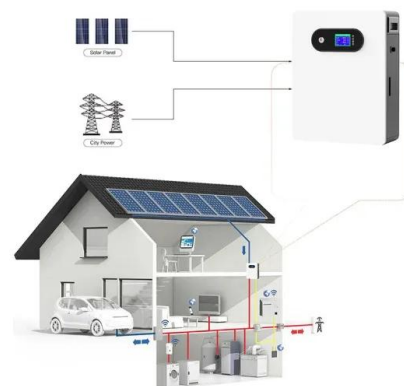
[Product Information](#)



Solar Energy Per Square Meter

Solar energy per square meter (W/m^2) = Total solar energy received (W) / Total surface area (m^2) The total solar energy received by a surface can be measured using a solar ...

[Product Information](#)



How many watts can one square meter of solar energy produce?

1. One square meter of solar energy can generate approximately 150 to 200 watts under ideal conditions, conditions that include optimal positioning relative to the sun, high ...

[Product Information](#)



[Solar Panel kWh Calculator: kWh Production Per Day, ...](#)

Here is how this solar output works: Let's say you have a 300-watt solar panel and live in an area with 5.50 peak sun hours per day. How many kWh does ...



[Product Information](#)



[Solar Panel Watts Per Square Foot: 'We \(Finally\) Did The Math'](#)

There is a lot of disagreement on how many watts can solar panels produce per square foot. Some say as little as 10 watts per square foot; others say it's 20+ watts per square foot.

[Product Information](#)

Solar Panel Power Per Square Meter: How to Calculate Efficiency

Power Output= $0.18 \times 1000 \text{ W/m}^2 = 180 \text{ W/m}^2$. This means that for every square meter of this solar panel, you can generate 180 watts of power under optimal conditions. Panel ...

[Product Information](#)



[How many kw is one square meter solar panel?_NenPower](#)

To determine the energy output of a solar panel measured per square meter, several factors must be considered, including panel efficiency, solar irradiance, and ...

[Product Information](#)



[How many watts does a square meter of solar panel have?](#)

1. Solar panels generate approximately 100 to 200 watts per square meter under optimal sunlight conditions, 2. Factors affecting solar panel output include angle, shading, and ...

[Product Information](#)



[How Big Is A 100 Mw Solar Farm? \[Updated: September 2025\]](#)

The solar farm is quite large, taking up 640 acres of land. It is capable of producing 100 megawatts of power. This is enough to power all of the MGM resorts in Las Vegas. So, ...

[Product Information](#)

Contact Us

For catalog requests, pricing, or partnerships, please visit:
<https://les-jardins-de-wasquehal.fr>