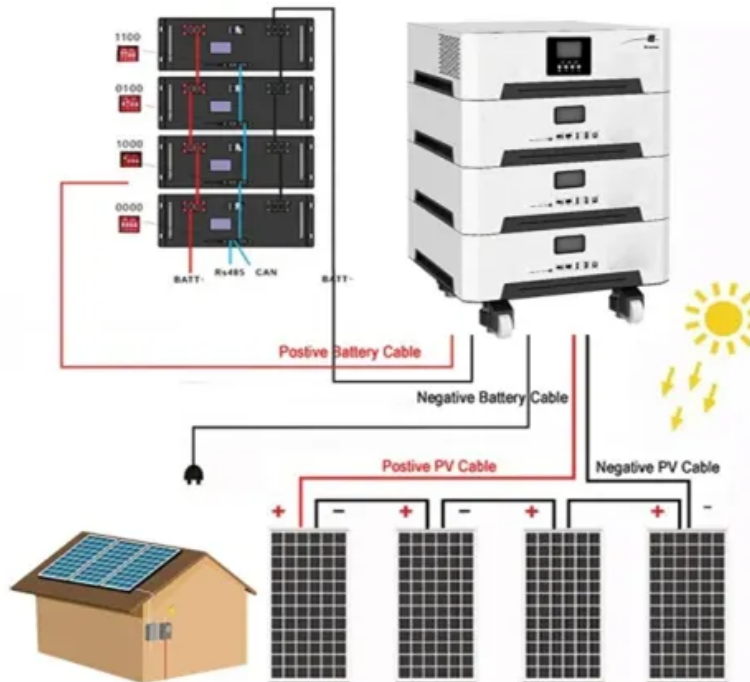


How many photovoltaic panels can a 225kw inverter support





Overview

How many solar panels can an inverter handle?

To effectively determine the number of solar panels an inverter can handle, you must first assess the size of your solar panel array. The overall capacity of your solar installation is defined by the wattage and number of panels. You can expect that the inverter should match or slightly exceed the combined wattage produced by the solar panels.

How many solar panels can a 5 kW inverter use?

You will also need to consider the wattage of the solar panels you plan to use. For example, if you have a 5 kW inverter and each of your solar panels is rated at 300 watts, you can calculate the maximum number of panels by dividing the inverter's capacity by the panel wattage: $5,000 \text{ watts (inverter)} / 300 \text{ watts (panel)} = \text{approximately } 16.67$.

How much power does a 5KVA inverter need?

If you are looking to power a 5kva inverter with solar panels, you will need at least 18 250-watt panels. This is because the inverter will require 1,500 watts of power and each panel produces about 250 watts of power. Inverters also have a peak wattage, which is usually about 50% higher than the continuous wattage.

How to choose a solar inverter?

You can expect that the inverter should match or slightly exceed the combined wattage produced by the solar panels. Therefore, if you have an array of 20 solar panels, each with a capacity of 300 watts, the total output will be 6000 watts, which is an important benchmark for choosing your inverter.

What size solar inverter do I Need?

The size of your inverter will ultimately be determined by the wattage of your



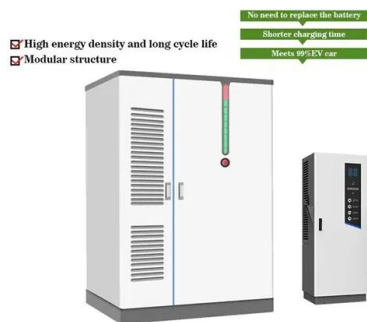
solar panel array and the amount of power you want to produce. A 3000-watt inverter is a good choice for most households who want to use solar power.

Can I connect more solar panels to an inverter?

It's not a good idea to connect more solar panels to an inverter than it's rated for. But if the total power output of the solar panels matches or is within the maximum rated capacity of the inverter, then it's safe and efficient.



How many photovoltaic panels can a 225kw inverter support



[How many solar panels do I need to power my home?](#)

Don't have your energy usage data handy? Estimate how many solar panels you need based on your home's square footage, # of bedrooms, or monthly energy bill.

[Product Information](#)

[How many solar panels can I use with a particular inverter?](#)

Pretending that our system is going to be 240V, we need at least 125V to start the inverter, therefore, the minimum number of solar panels you can use is 4 ($125V / 40V_{oc} = ...$)

[Product Information](#)



[How Many Solar Panels Can Be Connected To Solar Inverter?](#)

Generally, when configuring solar panels for solar inverters, the sales can recommend solutions to you based on your needs, combined with comprehensive factors such ...

[Product Information](#)

[Solar Panel Inverter Size Calculator](#)

Solar Panel Inverter Size Calculator Total Load (Watts): Inverter Efficiency (%): Calculate Inverter Size Did you know the right solar panel inverter size is key to your solar ...

[Product Information](#)



[Is it Safe to Have Too Many Solar Panels on an Inverter?](#)

It's not a good idea to connect more solar panels to an inverter than it's rated for. But if the total power output of the solar panels matches or is within the maximum rated ...

[Product Information](#)



[How many solar panels does a 10kW inverter really support](#)

A 10kW solar inverter from HopeWind can efficiently support up to 27 solar panels of 550W each, ensuring maximum efficiency and operational safety as voltage limits and ...

[Product Information](#)



[Is it Safe to Have Too Many Solar Panels on an Inverter?](#)

It's not a good idea to connect more solar panels to an inverter than it's rated for. But if the total power output of the solar panels matches or ...

[Product Information](#)





[How Many Solar Panels Can I Connect to My Inverter?](#)

Adding solar panels is an obvious solution, but how many of these PV modules can your inverter handle? A solar array can be up to 130% of the inverter capacity.

[Product Information](#)



[How Many Solar Panels Can I Connect to an Inverter?](#)

To get the best performance from your solar system, you need to match your solar panel wattage with your inverter's capacity. Here's an easy, step-by-step guide to finding the ...

[Product Information](#)

[How Many Inverters Per Solar Panel? Don't Miss This Tip](#)

When installing a solar panel system, understanding the role of inverters is crucial. Solar inverters convert the DC electricity from your panels into AC electricity for use in your ...

[Product Information](#)



[How many solar panels can an inverter handle](#)

To effectively determine the number of solar panels an inverter can handle, you must first assess the size of your solar panel array. The overall capacity of your solar ...

[Product Information](#)



PV Inverters

PV Inverters - Basic Facts for Planning PV Systems The inverter is the heart of every PV plant The inverter is the heart of every PV plant; it converts direct current of the PV modules into ...

[Product Information](#)



[How Many Solar Panels Can I Connect to an Inverter? A...](#)

This guide will discuss the factors that determine how many solar panels can be connected to an inverter, such as inverter specifications, wiring configurations, and the use of charge controllers.

[Product Information](#)

[Solar String Sizing for Installers & Mistakes to Avoid](#)

Solar string sizing is fundamental to making sure everything in a system runs smoothly. When done right, it helps the photovoltaic (PV) panels and inverters ...



[Product Information](#)



[How Many Solar Panels Can Connect to Inverter? _inverter](#)

The specifications will vary so make sure to check the inverter before connecting any solar panel. Generally speaking, the inverter can handle 30% more power than the rated ...

[Product Information](#)



[How Many Panels Can I Put on My Inverter?](#)

The number of panels that can be connected to an inverter depends on the wattage and voltage of the inverter. Most residential inverters have a capacity of around 1,000 ...

[Product Information](#)



[Solar Panel kWh Calculator: kWh Production Per Day, ...](#)

Solar Output = Wattage × Peak Sun Hours × 0.75 Based on this solar panel output equation, we will explain how you can calculate how many kWh per day ...

[Product Information](#)

Contact Us

For catalog requests, pricing, or partnerships, please visit:
<https://les-jardins-de-wasquehal.fr>