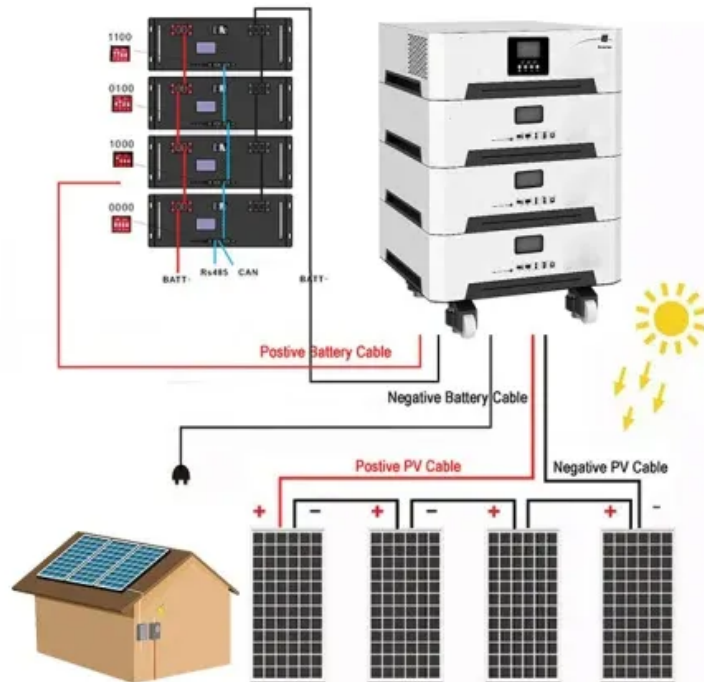


How many degrees can the outdoor power supply reach





Overview

What temperature should a commercial power supply be rated?

Typical commercial power supplies are specified to support their full rated load over an ambient temperature range from zero or minus 25 degrees Celsius to around 50 degrees Celsius, and they may derate to 50% load at 70 degrees Celsius.

What is a good ambient temperature for a power supply?

Some applications may require ambient operating temperatures as low as -40 degrees Celsius and as high as +85 degrees Celsius, or an even wider range. A number of factors can influence the ambient temperature that a power supply is subjected to in a given application, including the following:.

Why should a power supply have a wide operating temperature range?

Depending on the application, a power supply with a wide operating temperature range may provide better reliability and a longer operating lifetime, prevent the need for a cooling fan or other special design consideration for thermal management, and reduce the overall cost of your system.

What does it mean if a power supply exceeds standard operating temperatures?

Exceeding standard operating temperatures means running your power supply when the ambient temperature falls outside the operating temperatures for which it is rated. Sometimes this happens — you can't predict every possible usage scenario, and you can't always guarantee a stable environment.

Why is running a power supply at a specified temperature important?

Running your power supply within its specified operating temperatures is essential for optimizing its performance, preventing overheating and



breakdowns, and extending its lifespan.

How do I choose a power supply?

When you're selecting a power supply for your system, you'll need to consider its ambient operating temperature range. Running your power supply within its specified operating temperatures are essential for optimizing its performance, preventing overheating and breakdowns, and extending its lifespan.



How many degrees can the outdoor power supply reach



[How Many Degrees Can an Air Conditioner Cool Your Space?](#)

Typical Cooling Capacity of Air Conditioners Most residential air conditioners can lower indoor temperatures by about 15 to 20 degrees Fahrenheit compared to the outside ...

[Product Information](#)

[The Benefits of Wide Operating Temperature Power Supplies](#)

Typical commercial power supplies are specified to support their full rated load over an ambient temperature range from zero or minus 25 degrees Celsius to around 50 degrees Celsius, and ...

[Product Information](#)



The new 100 Watt outdoor power supply: How many lamps are ...

If you want to play it safe and need even more power, you can now reach for the big 100 watt power supply, which Philips Hue already announced in January. Meanwhile the new ...

[Product Information](#)



[How to convert portable outdoor power supply](#)

Many people need to know how long it will last, and how much power can carry what devices, before buying an off-customer storage power supply. In order to ensure ...

[Product Information](#)



How many degrees of outdoor power supply are considered normal

What does it mean if a power supply exceeds standard operating temperatures? Exceeding standard operating temperatures means running your power supply when the ambient ...

[Product Information](#)



[Can an AC be designed to cool more than 20 degrees below](#)

2. an AC compressor is designed to operate at a specific temperature range. when it is 100+ degrees outside, there is only so much the compressor can do. unless you have a super, ...

[Product Information](#)



[How to choose an outdoor power supply?](#)

How to choose an outdoor power supply? The only purpose of this article is to save your time with the data I have compiled and to provide you with a comprehensive ...

[Product Information](#)





[What Classifies an Extreme Environment for Power Supplies?](#)

High heat above +85°C and freezing environments below -40°C can cause a major threat to a power supply. An environment that is too hot can cause rapid degradation of ...

[Product Information](#)



[How Many Degrees Does an Evaporative Cooler Cool? The ...](#)

The scorching summer heat can make staying indoors feel like an unbearable ordeal. While air conditioners are the go-to solution for many, evaporative coolers offer a more ...

[Product Information](#)



[How many degrees can milliwatts of solar energy reach?](#)

How many degrees can milliwatts of solar energy reach? **1. Milliwatts can convert energy into heat, achieving potentially high temperatures, **2. The efficiency of solar panels ...

[Product Information](#)



[The Benefits of Wide Operating Temperature Power...](#)

Typical commercial power supplies are specified to support their full rated load over an ambient temperature range from zero or minus 25 degrees Celsius to ...

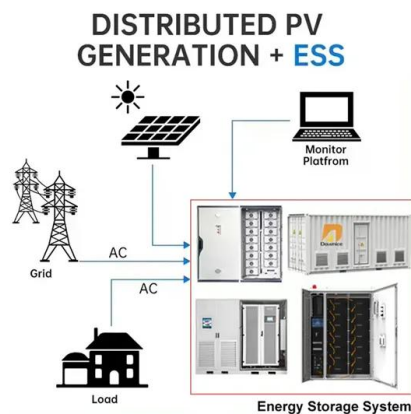
[Product Information](#)



[Uninterruptible Power Supply Outdoor](#)

Weather Resistance: Designed with enclosures rated to withstand rain, snow, humidity, and UV exposure. These units often carry IP65 or higher ratings. Wide Operating Temperatures: ...

[Product Information](#)



[Simple electricity basics for outdoor cooling](#)

Here's how you can know if this outdoor fan or that portable air conditioner or that other cooler will work with your electricity supply and how much electricity it will use.

[Product Information](#)

[Does Outside Temperature Affect Air Conditioner Efficiency?](#)

Does Outside Temperature Affect Air Conditioner?Extremely cold temperatures can cause issues for AC units that provide heating. Strategies such as shading the outdoor ...

[Product Information](#)



[How many degrees can a solar panel reach?..](#) [NenPower](#)

In general, solar panels can reach temperatures of around 150 to 185 degrees Fahrenheit (65 to 85 degrees Celsius), depending on several factors, including the ...

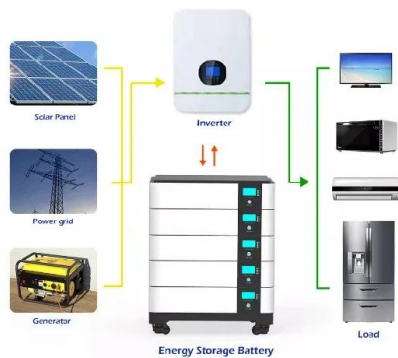
[Product Information](#)



[TSI Outdoor UPS Solution , Ideal For Harsh Environments](#)

TSI Offers Outdoor UPS In Both AC And DC-Output. Ideal For Harsh Outdoor Environments. Keep Your Critical Equipment Running With A Reliable Outdoor Uninterruptible Power Supply.

[Product Information](#)



[National Electrical Code \(NEC\) Rules for Outdoor Wiring](#)

Homes must have at least one outdoor receptacle at the front and rear of the house. They must be readily accessible from the ground and positioned no more than 6 1/2 feet above ...

[Product Information](#)

Contact Us

For catalog requests, pricing, or partnerships, please visit:
<https://les-jardins-de-wasquehal.fr>