

How big an inverter should I use for 1kW of solar power





Overview

The size of the inverter will be determined by the watts of your solar panels. A general rule of thumb is that you will need a 1,000 watt (1kW) inverter for every 1 kilowatt (kW) worth of solar panels. So, if you have 4 kW of solar panels, you would need at least a 4kW inverter. What are the different solar inverter sizes?

Solar generators range in size from small generators for short camping trips to large off-grid power systems for a boat or house. Consequently, inverter sizes vary greatly. During our research, we discovered that most inverters range in size from 300 watts up to over 3000 watts. In this article, we guide you through the different inverter sizes.

Should your inverter size match your solar panel size?

Match your inverter to your lifestyle, not just your roof. If you're running a fridge, home office, and PS5 all day, size accordingly. If you're barely home, go leaner. Here's the cheat code: your inverter size should usually match your solar panel system's size in kilowatts.

How many kW can a solar inverter generate?

Total capacity = $20 \times 500 = 10,000$ watts or 10 kW The industry standard suggests that the inverter's capacity should be between 80% to 125% of the solar panels' capacity. For example, if your panels generate 10 kW: Minimum inverter size = $10,000 \times 0.8 = 8$ kW Maximum inverter size = $10,000 \times 1.25 = 12.5$ kW.

What is a solar inverter sizing calculator?

A solar inverter sizing calculator is a tool used to determine the appropriate size of a solar inverter for your solar power system based on the total power consumption of connected appliances and the size of your solar panel array. It ensures the inverter can handle the peak loads efficiently.

What size inverter do I Need?



Inverters come in different sizes starting from as little as 125 watts. The typical inverter sizes used for residential and commercial applications are between 1 and 10kW with 3 and 5kW sizes being the most common. With such an array of options, how do you find the right size for you?

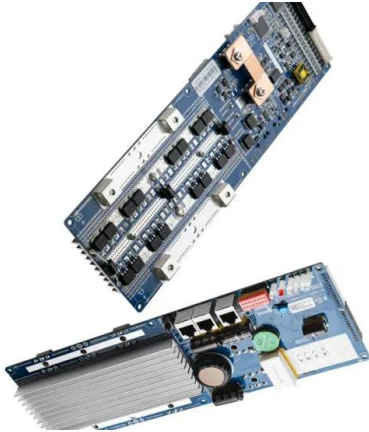
An inverter works best when close to its capacity.

How much wattage should a solar inverter have?

Determine how many watts and the number of solar panels you will be installing. For example, assume you have eight 350W panels, then your total wattage would be ($8 * 350W = 2800W$) or 2.8kW. This number will become important in the inverter sizing equation. 3. Account for System Losses



How big an inverter should I use for 1kW of solar power



[Solar inverter size: Calculate the right size for your ...](#)

Discover why solar inverter sizing is important for efficiency and performance. Learn how to calculate the ideal inverter size for your solar panels, battery, ...

[Product Information](#)

Size your solar system

The size of a rooftop solar system refers to the total power-generating capacity of all the solar panels, measured in kilowatts (kW). The system size depends on the number of solar panels ...

[Product Information](#)



[What Size Solar Inverter Do I Need? Experts Break It Down](#)

What Size Solar Inverter Do I Need? A solar inverter should closely match your solar system's output in kW--typically within 80% to 120% of your total panel capacity.

[Product Information](#)

Solar Panel Inverter Size Calculator: Know What You Need , Angi

For example, if you have a 6-kilowatt (kW) solar energy system, use an inverter that has a maximum AC output of around 6,000 watts. Keep in mind, this is just a rule of thumb. ...



[Product Information](#)



[What Size Inverter Needed for Solar Panels?](#)

The size of the inverter will be determined by the watts of your solar panels. A general rule of thumb is that you will need a 1,000 watt (1kW) inverter for every 1 kilowatt (kW) ...

[Product Information](#)

[How to Determine the Right Inverter Sizes for Your Needs](#)

Choosing the right inverter size ensures your electrical needs are met efficiently and safely. An inverter converts direct current (DC) electricity from sources like batteries or ...



[Product Information](#)



[How To Size an Inverter: Solar Inverter Sizing Explained](#)

When sizing an inverter, calculate the total wattage needed and understand surge vs. continuous power. Choose the right size with a 20% safety margin. Factor in simultaneous ...

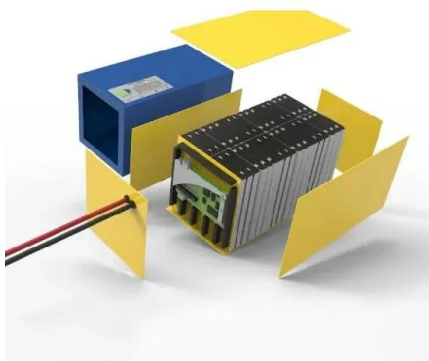
[Product Information](#)



[how big an inverter do i need for 10kw solar](#)

How Big of an Inverter Do I Need for a 10 kW Solar System? Introduction When installing a 10 kW solar system, it is essential to choose the right size inverter ...

[Product Information](#)



[How does sizing a solar inverter work?](#)

As a general rule of thumb, the size of your inverter should be similar to the DC rating of your solar panel system; if you are installing a 6 kilowatt (kW) system, you can expect ...

[Product Information](#)

How to Choose the Right Size Solar Inverter: Step-by-Step with ...

Wondering what size solar inverter do I need for your solar system? This guide walks you through calculating inverter size based on panel capacity, power usage, and safety ...

[Product Information](#)



[calculate inverter size for solar + Sizing Formula](#)

Sizing your solar inverter and on grid solar inverter is very important for efficiency but also pertains to longevity. In this article, we are going to find out how to calculate inverter ...

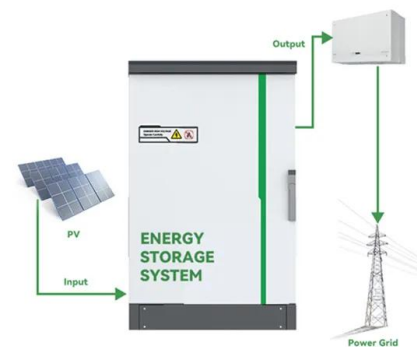
[Product Information](#)



[Choosing and Sizing Batteries, Charge Controllers ...](#)

Calculation Once you have sized your battery bank and solar panel array, determining which charge controller to use is comparatively straight forward. ...

[Product Information](#)



[How To Size A Solar Inverter in 3 Easy Steps](#)

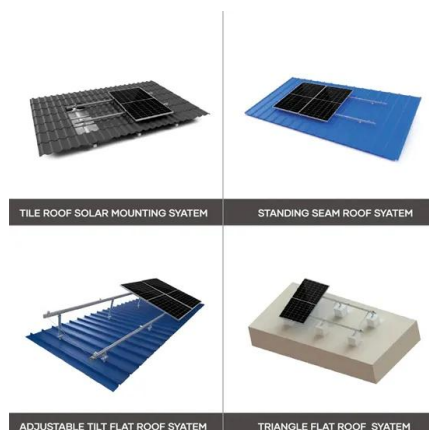
Your solar inverter should have a similar or slightly higher wattage rating than the DC output of your solar panels (which in this case is 4.5 kW). You can size it between 1.15 and 1.5 times ...

[Product Information](#)

[Solar Inverter Sizing Calculator: Important Guide](#)

For a 10 kW solar system, an inverter size between 8 kW to 12.5 kW is typically recommended. However, specific requirements may vary based on panel performance, ...

[Product Information](#)



[Solar inverter sizing: Choose the right size inverter](#)

Converting energy from DC to AC allows you to deliver it to the grid or use it to power buildings, both of which operate with AC electricity. When designing a solar installation, and selecting the ...

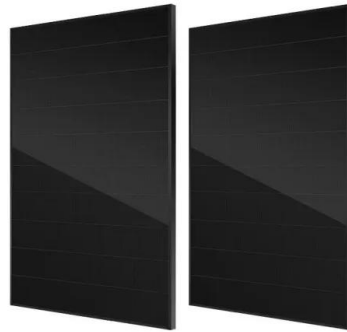
[Product Information](#)



[The Only Inverter Size Chart You'll Ever Need](#)

During our research, we discovered that most inverters range in size from 300 watts up to over 3000 watts. In this article, we guide you through the different inverter sizes. ...

[Product Information](#)



Contact Us

For catalog requests, pricing, or partnerships, please visit:
<https://les-jardins-de-wasquehal.fr>