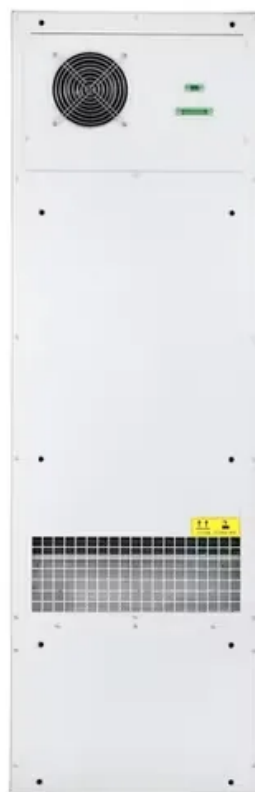
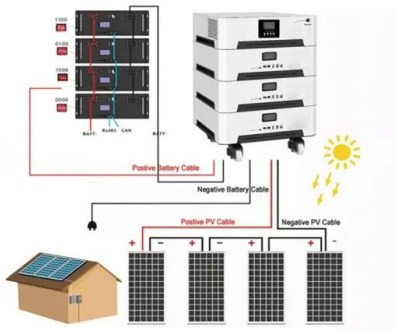


High-power inverter composed of ipm intelligent power modules





High-power inverter composed of ipm intelligent power modules



[MITSUBISHI ELECTRIC Power devices: Product Information](#)

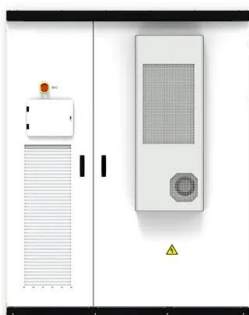
IPM (Intelligent Power Module) with a drive circuit, DIPIPM with a transfer molded exterior developed for small capacity inverter equipment such as home appliances.

[Product Information](#)

[Mitsubishi Electric Power devices: IPM V1](#)

IPM (Intelligent Power Module) is a high-performance module equipped with a dedicated drive circuit for drawing greater performance from an IGBT chip, and provides a custom IC for ...

[Product Information](#)



[Intelligent power modules \(IPM\) , Infineon Technologies](#)

Infineon's CIPOS(TM) IPM family offers a series of end-to-end integrated power modules for applications spanning from 20 W to 5 kW, including low-power and major home appliances, as ...

[Product Information](#)

[Why High-Power Applications Demand IPM Power Modules](#)

3. Compact Design Replacing multiple parts with one intelligent power module IPM saves space. Critical for EVs and solar inverters. 4. Built-In Protection IPMs include: Short-circuit detection ...



[Product Information](#)



[Intelligent Power Module \(IPM\) Inverter, 1200 V, 35 A](#)

NFAM3512L7B is an advanced IPM module providing a fully-featured, high-performance inverter output stage for AC Induction, BLDC and PMSM motors. These modules integrate optimized ...

[Product Information](#)

SLLIMM nano small low-loss intelligent molded module IPM, 3 A, ...

Description This intelligent power module implements a compact, high performance AC motor drive in a simple, rugged design. It is composed of six IGBTs with freewheeling diodes and ...

[Product Information](#)



Intelligent Power Modules (IPM) , Tutorials on Electronics , Next

An Intelligent Power Module (IPM) is a high-performance, integrated power electronics module that combines power switching devices, gate drivers, protection circuits, and thermal ...

[Product Information](#)





PIM (Power Integrated Module)

The difference with IPM (Intelligent Power Module) is that IPM also has a built-in gate driver, but PIM does not have a built-in gate driver. And PIM is more specialized for high power. By using ...



[Product Information](#)



[How Intelligent Power Module Inverter Technology is ...](#)

The intelligent power module inverter is transforming energy efficiency across industries. With benefits like lower power loss, compact size, and better reliability, IPMs are a key technology ...

[Product Information](#)

Classification and Application Prospects of Intelligent Power Modules (IPM)

Conclusion Intelligent power modules (IPMs) play an important role and have broad application prospects in modern electronic and power systems. Through continuous ...

[Product Information](#)



[Porsche Debuts World's First 11 kW Wireless EV Charging ...](#)

3 days ago · An Intelligent Power Module (IPM) is an advanced electronic component that integrates power devices like Insulated Gate Bipolar Transistors (IGBTs) or Silicon Carbide ...

[Product Information](#)





[Intelligent power modules \(IPM\) , Infineon Technologies](#)

Infineon's CIPOS(TM) IPM family offers a series of end-to-end integrated power modules for applications spanning from 20 W to 5 kW, including low-power ...

[Product Information](#)



[Intelligent power modules target inverter drives](#)

Onsemi's EliteSiC SPM 31 intelligent power modules enable high efficiency in inverter motor drives. Onsemi has launched the first generation of its 1,200-V silicon carbide ...

[Product Information](#)

[4GL-IPU: Power Unit for 2-Motor System](#)

Authors: Satoshi Ishibashi* and Noriyuki Wada*
Mitsubishi Electric Corporation first commercialized Intelligent Power Modules (IPM) for hybrid electric vehicles in 1997. Since ...

[Product Information](#)



The Intelligent Power Module Concept for Motor Drive Inverters

The Large DIIPM(TM) package targets high power inverters where space is limited and a PCB based design is preferred. Blocking voltages of 600V and 1200V are offered with a ...

[Product Information](#)



Intelligent Power Module (IPM)

The NFAQ0560R43T is a fully-integrated inverter power stage consisting of a high-voltage driver, six IGBTs (FS4 RC IGBT technology) and a thermistor, suitable for driving permanent magnet ...

[Product Information](#)



We are the Ultimate Partner in Power Electronics , Semikron ...

To help enable zero emission driving, Semikron Danfoss provides cutting-edge power modules integrated into the drivetrain, enabling automotive manufacturers worldwide to deliver electric ...

[Product Information](#)

4 Easy Ways to Test Intelligent Power Modules (IPM) in Inverter

Learn the top 4 methods to test Intelligent Power Modules (IPM) in inverter circuits quickly and accurately! This video covers essential IPM testing techniques for diagnosing inverter circuit

[Product Information](#)



New High Level Integrated Intelligent Power Module with Three ...

This paper introduces a new high level integrated IPM (Intelligent Power Module) with a three phase inverter and a power factor correction (PFC) topology optimi

[Product Information](#)



Contact Us

For catalog requests, pricing, or partnerships, please visit:
<https://les-jardins-de-wasquehal.fr>