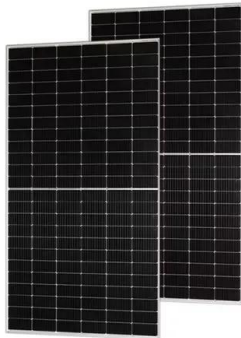


Fixed power generation in substations





Fixed power generation in substations



[Substation configuration and build types .
National Grid](#)

Substation bay: A set of equipment that connects a circuit into a substation. Bays can be connected to generation, such as renewable generators or demand, ...

[Product Information](#)

[Fixed Transformer Substations Market](#)

Renewable integration creates distinct requirements across market types. Mature markets require substations with advanced voltage regulation for distributed solar and wind farms - UK ...

[Product Information](#)



The basic things about substations you MUST know in the middle ...

For energy developers, understanding the distinctions between grid stations, substations, and switchyards in power systems is essential to ...

[Product Information](#)

[Fundamentals of Modern Electrical Substations](#)

Part 1 of this course series is concentrated on demonstrating how modern power systems are arranged to accomplish all these goals; what place electrical substations have in the overall ...

[Product Information](#)



[Six common bus configurations in substations up to 345 kV](#)

Comparison of bus configurations This technical article explains six most common bus configurations used for distribution, transmission, or switching substations at voltages up ...

[Product Information](#)



[Dynamic Cable System for Floating Offshore Wind Power...](#)

Floating offshore wind power generation has attracted increasing attention because of the deep water levels around Japan. We have developed a dynamic cable system that stably transmits ...

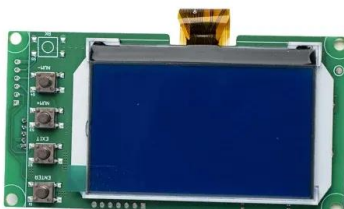
[Product Information](#)



[Shunt reactors improve voltage stability and power quality](#)

Shunt reactors are cost-effective and reliable Shunt reactors (SR) are commonly used to compensate reactive power and to maintain voltage stability ->1. Traditionally, SRs have fixed ...

[Product Information](#)





[What Is an Electrical Substation? Complete Guide](#)

Let's explore what makes electrical substations so essential to keeping your facility powered safely and efficiently. What Is an Electrical Substation and ...

[Product Information](#)



Types of Substations and Functions

These substations provide a rapid and flexible power supply when permanent substations are unavailable or undergoing repairs. Mounted on trailers or skids, mobile substations can be ...

[Product Information](#)



[SECTION 9: ELECTRICAL POWER DISTRIBUTION](#)

Circuit protection Surge arresters Circuit breakers Substation bus feeds the primary distribution network Feeders leave the substation to distribute power into the service area in one of three ...

[Product Information](#)



Electric Power Generation, Transmission, and Distribution eTool

Typically substations are unoccupied and are considered "field" work locations. Where workers report to and work regularly at substations, these substations would be "fixed" work locations.

[Product Information](#)



Electrical Substation: Equipment, Types, Components & Functions

Based on the construction and installation of switchgear, electric substations are of two types. Based on transmission voltage and function, the electric substation is classified into three ...

[Product Information](#)



[How It Works: Electric Transmission & Distribution and...](#)

Distribution circuits, also known as express feeders or distribution main feeders, carry low-voltage power from the distribution substations to transformers closer to customer sites that further ...

[Product Information](#)



Electrical Substations Explained: Key Functions and Importance ...

Distribution substations reduce voltage levels for local distribution, while generation substations connect power plants to the grid. Switching substations focus on routing electricity ...

[Product Information](#)



[Distributed generation hosting capacity methodology](#)

Distributed generation hosting capacity methodology The DG Hosting Capacity uses a simple, high iteration approach appropriate to the current quality of data, modelling, and ...

[Product Information](#)

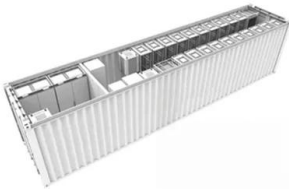




Understanding Grid Stations, Substations, and Switchyards in Power ...

For energy developers, understanding the distinctions between grid stations, substations, and switchyards in power systems is essential to effectively plan and manage ...

[Product Information](#)



The basic things about substations you MUST know in the middle ...

Sub-transmission substations typically operate at 33 kV through 138 kV voltage levels. This kind of substations transform the high voltages used for efficient long distance ...

[Product Information](#)

[Complete Guide to Electrical Substations](#)

There are three primary types of electrical substations as described below - Step-up substations: These substations increase the voltage for long-distance transmission. Step ...

[Product Information](#)



Contact Us

For catalog requests, pricing, or partnerships, please visit:
<https://les-jardins-de-wasquehal.fr>