

# **Communication base station distribution box base station**





## Communication base station distribution box base station

---



### [Rath Communications IP Command 10 Zone](#)

IP Command Center 10 Zone - Desk Mount  
Features & Specs Desk mount phone Includes handset and speaker phone for communication to Call Boxes Base Station and Sub-Master ...

### [Product Information](#)

### [Rath Communications Base Station 112 Zone](#)

Area of Refuge 5 & 10 Call Box Our Rath Communications 1 - 10 Call Box Area of Refuge System supports 5 and 10 zone base stations to provide coverage for your facility. These systems ...

### [Product Information](#)



### [Rath Communications Base Station 10 Zone](#)

This system features a lockable base station cabinet and two-way communication utilizing one dedicated phone line. With one pair of wires between the call box and distribution module, ...

### [Product Information](#)

### [Rath Communications Base Station 112 Zone](#)

The base station and call boxes are available in surface or flush mount and provide two-way person to person voice communication capabilities. All of our Rath area of refuge systems are ...



## [Product Information](#)



### **Base Station System Structure**

To develop a base station reference model we will take a top-down approach that explores the system context from which the cellular service has evolved and toward which it is migrating. ...

## [Product Information](#)



### **Critical Communication Base Station -- Global Communications**

For customers running operations in a mix of built-up and rural areas, it is also possible to run both VHF and UHF in the same network using separate BS422 base stations operating the ...

## [Product Information](#)



### **Multi-objective cooperative optimization of communication ...**

This paper develops a method to consider the multi-objective cooperative optimization operation of 5G communication base stations and Active Distribution Network (ADN) and constructs a ...

## [Product Information](#)





### [Critical Communication Base Station -- Global ...](#)

For customers running operations in a mix of built-up and rural areas, it is also possible to run both VHF and UHF in the same network using separate BS422 ...

### [Product Information](#)



### **Fiber Distribution Box Basics**

Telecommunications Networks: In telecommunications networks, fiber distribution box is used for the termination and connection of fiber optic cables connecting base stations, ...

### [Product Information](#)

### [Rath Communications Base Station 92 Zone](#)

The base station and call boxes are available in surface or flush mount and provide two-way person to person voice communication capabilities. All of our Rath area of refuge systems are ...

### [Product Information](#)



### [Communication Base Station Power Supply Communication ...](#)

We are a professional company engaged in electrical automation, committed to providing customers with integrated power distribution and automation solutions for high and low voltage ...

### [Product Information](#)



### [Telecom Base Station Power System Solution](#)

In order to ensure the continuity and efficiency of communication services, the power system of telecommunications base stations needs to have high reliability, stability and high efficiency to ...

#### [Product Information](#)



### [IoT Glossary: Base Station Controller Explained](#)

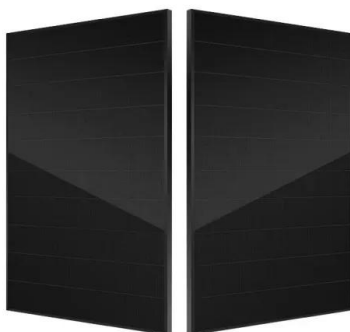
At its core, a base station is a radio receiver equipped with one or multiple antennas. Originally introduced in mobile telecommunication networks, the base station has ...

#### [Product Information](#)

### [What is a Base Station in Telecommunications?](#)

Base stations are the backbone of modern telecommunications networks, providing the essential infrastructure for wireless communication. They enable mobile devices to connect to the ...

#### [Product Information](#)



### [Rath Communications Base Station 56 Zone](#)

The base station and call boxes are available in surface or flush mount and provide two-way person to person voice communication capabilities. All of our Rath area of refuge systems are ...

#### [Product Information](#)



### [Section 273000: Area of Refuge/Elevator Landing](#)

Section 273000: Area of Refuge/Elevator Landing  
- Two-Way Communication System o Command Center (Base Station & Distribution Module), Call Boxes, and Signage

#### [Product Information](#)



### **Communication Base Station Power Supply Communication Base Station**

We are a professional company engaged in electrical automation, committed to providing customers with integrated power distribution and automation solutions for high and low voltage ...

#### [Product Information](#)

## **Contact Us**

---

For catalog requests, pricing, or partnerships, please visit:  
<https://les-jardins-de-wasquehal.fr>