

Communication and which 5g base station





Overview

What is a 5G base station?

As the world continues its transition into the era of 5G, the demand for faster and more reliable wireless communication is skyrocketing. Central to this transformation are 5G base stations, the backbone of the next-generation network. These base stations are pivotal in delivering the high-speed, low-latency connectivity that 5G promises.

What are base stations in 4G LTE networks called?

The base stations in 4G LTE networks are called either evolved Node B or eNodeB. You'll find that eNodeB is usually abbreviated as eNB in 5G network architecture diagrams, and gNodeB as gNB. It helps to keep mind that a base station called eNB is for 4G, and gNB is for 5G.

What are the components of a 5G core network?

The key components of a 5G core network are seen here: User Equipment (UE): 5G cellular devices, such as smartphones, connect via the 5G New Radio Access Network to the 5G core and then to the internet. Radio Access Network (RAN): Coordinate network resources across wireless devices.

What is 5G ran architecture?

One of the key components of 5G is the Radio Access Network (RAN) architecture, which is responsible for managing the wireless connections between devices and the network. This article will provide a technical overview of the 5G RAN architecture, including its various nodes and components.

What is a 5G baseband unit?

The 5G baseband unit is responsible for NR baseband protocol processing, including the entire user plane (UP) and control plane (CP) protocol processing functions, and provides the backhaul interface (NG interface) with the core



network and the interconnection interface between base stations (Xn interface).

What frequency bands do 5G base stations use?

Utilization of Frequency Spectrum: 5g Base Stations Operate in specific Frequency Bands Allocated for 5G Communication. These bands include Sub-6 GHz Frequencies for Broader Coverage and Millimeter-Wave (Mmwave) Frequencies for Higher Data Rates.



Communication and which 5g base station



Modeling information and communication interaction in 5G cluster

The research focuses on the processes of information and communication interaction between a set of subscribers and a base station in a 5G cluster. We...

[Product Information](#)

[Ambitious 5G base station plan for 2025](#)

China aims to build over 4.5 million 5G base stations next year and give more policy as well as financial support to foster industries that can define the next decade, the ...

[Product Information](#)



Energy-efficiency schemes for base stations in 5G heterogeneous

In today's 5G era, the energy efficiency (EE) of cellular base stations is crucial for sustainable communication. Recognizing this, Mobile Network Operators are actively prioritizing EE for ...

[Product Information](#)

[What is 5G base station architecture?](#)

The base stations in 4G LTE networks are called either evolved Node B or eNodeB. You'll find that eNodeB is usually abbreviated as eNB in 5G network architecture diagrams, ...

[Product Information](#)



[Learn What a 5G Base Station Is and Why It's Important](#)

A 5G base station is the heart of the fifth-generation mobile network, enabling far higher speeds and lower latency, as well as new levels of connectivity. Referred to as gNodeB, 5G base ...

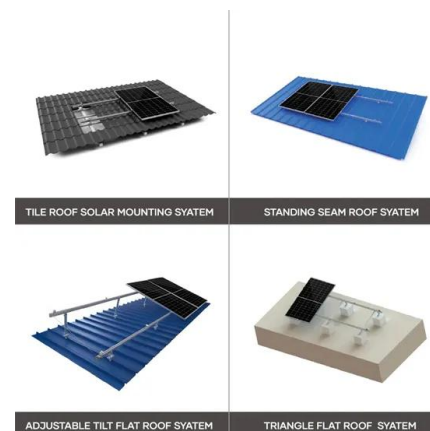
[Product Information](#)



[An Introduction to 5G and How MPS Products Can Optimize ...](#)

5G wireless devices communicate via radio waves sent to and received from cellular base stations (also called nodes) using fixed antennas. These devices communicate across specific ...

[Product Information](#)



[Which RF Technologies Are Shaping 5G Base Stations?](#)

5G base stations are the backbone of the 5G network, transmitting and receiving radio signals across various frequency bands to provide connectivity to mobile devices.

[Product Information](#)



Towards Integrated Energy-Communication-Transportation Hub: A Base

Abstract The rise of 5G communication has transformed the telecom industry for critical applications. With the widespread deployment of 5G base stations comes a significant ...

[Product Information](#)



[5G RAN Architecture: Nodes And Components](#)

One of the key components of 5G is the Radio Access Network (RAN) architecture, which is responsible for managing the wireless connections between devices and the network. ...

[Product Information](#)

[5G Communication Base Stations Participating in Demand](#)

The 5th generation mobile networks (5G) is in the ascendant. The 5G development needs to deploy millions of 5G base stations, which will become considerable ...

[Product Information](#)



[Unveiling the 5G Base Station: The Backbone of Next-Gen...](#)

In this comprehensive article, we will delve into the intricate world of 5G base stations, exploring their components, architecture, enabling technologies, deployment strategies, and the ...

[Product Information](#)



Optimization Control Strategy for Base Stations Based on Communication

With the maturity and large-scale deployment of 5G technology, the proportion of energy consumption of base stations in the smart grid is increasing, and there is an urgent need to ...

[Product Information](#)



[5G Base Station Chips: Driving Future Connectivity by 2025](#)

As 5G networks become the backbone of modern communication, 5G base station chips are emerging as a cornerstone of this transformation. With projections showing ...

[Product Information](#)



Lithium battery parameters

Product capacity: 100Ah

Product size: 135*197*35mm

Product weight: 1.82kg

Product voltage: 3.2V

internal resistance: within 0.5



5g base station architecture

5G (fifth generation) base station architecture is designed to provide high-speed, low-latency, and massive connectivity to a wide range of devices. The architecture is more ...

[Product Information](#)



Comparison of Power Consumption Models for 5G Cellular Network Base

A recent evaluation of 5G networks [18] concludes that 87% of the total energy consumption associated with the operation of the network is attributed to the radio access ...

[Product Information](#)



[How a 5G cell tower works , Deutschland spricht über 5G](#)

Base stations, or mobile communications base stations, are stationary radio or mobile communications installations essentially consisting of two elements: (1) ...

[Product Information](#)



Optimizing the ultra-dense 5G base stations in urban outdoor ...

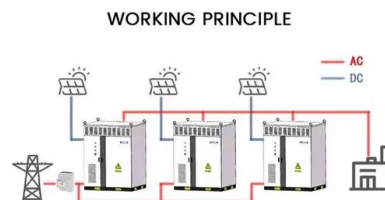
The developed model can facilitate the rollout of 5G technology. Due to the high propagation loss and blockage-sensitive characteristics of millimeter waves (mmWaves), ...

[Product Information](#)

[Installation of Base Stations and Radiation Safety](#)

The rollout of 5G services needs the establishment of an extensive network of radio base stations and small cells to support very high-speed data transmission and ubiquitous coverage. To ...

[Product Information](#)



Contact Us

For catalog requests, pricing, or partnerships, please visit:
<https://les-jardins-de-wasquehal.fr>