

Check the current of the photovoltaic combiner box





Check the current of the photovoltaic combiner box



Field Guide for Testing Existing Photovoltaic Systems for ...

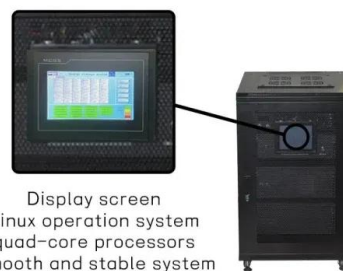
Proceed to the combiner box associated with the grounded conductor current and verify that the current is present in the combiner box's grounded output circuit conductor (Phase

[Product Information](#)

[Testing PV Modules , SunWize , Power Independence](#)

The best, quickest, and easiest way to test a solar module is to check both the open circuit voltage (Voc) and short circuit current (Isc). Depending on the ...

[Product Information](#)

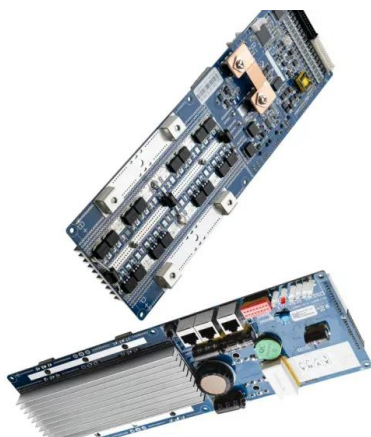


Display screen
Linux operation system
quad-core processors
smooth and stable system

Electrical Parameters to Consider When Designing a Combiner ...

The rated current of the combiner box reflects the maximum current it can safely transmit. The design must consider the current generated by the PV strings and ensure that the internal ...

[Product Information](#)



[7-Point Guide to Wiring a Combiner Box Like a Pro](#)

A combiner box wiring diagram is an essential part of any solar power system. It shows how to connect the solar panels to the combiner box, and from the combiner box to the ...



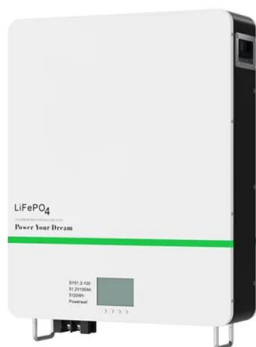
[Product Information](#)



[ECO-WORTHY Upgraded 6 String Solar PV Combiner Box,...](#)

Amazon : ECO-WORTHY Upgraded 6 String Solar PV Combiner Box, Upgraded 25A Current Fuse, 125A Circuit Breakers with Max Support Up to 6480W Solar System, Better ABS ...

[Product Information](#)



[Professional Solar PV Combiner Box Solutions](#)

A Solar Combiner Box is an essential component in solar power systems that combines multiple strings of solar panels into one main output circuit. It provides critical protection functions ...

[Product Information](#)



[What is a Combiner box?& How Does a Combiner Box Work?](#)

A combiner box consolidates the output from multiple solar panels into a single line for efficient energy transfer and monitoring. It includes overcurrent protection and improves system safety ...

[Product Information](#)





The Ultimate Guide to Solar Combiner Boxes: From Basics to ...

Maximum Current: Select a combiner box with a current rating that can handle the maximum current produced by your solar panel strings. Common ratings are typically below ...

[Product Information](#)



[Combiner Box Output Voltage/Current help](#)

I want to know what the output voltage and current would be on the diagrams below. I assume i'm correct with what I've written in the second picture but wondering what the ...

[Product Information](#)

Comprehensive Guide to PV Combiner Box Installation and Wiring

Since the components have been combined, the short-circuit current is significant, potentially causing fuses under the same inverter to blow and, in severe cases, destroy ...

[Product Information](#)



[Solar Combiner Box Common Problems & Troubleshooting](#)

Check the fuse holders and test each fuse for continuity. Burned fuses might result from a ground fault, overcurrent, or surge. Be sure to switch off the DC breaker before doing any live testing ...

[Product Information](#)



Integrating a Photovoltaic Combiner Box: A Step-by-Step Guide

The integration of a photovoltaic (PV) combiner box is a pivotal aspect of establishing a high-performing and safe solar energy system. This component serves to ...

[Product Information](#)



[Ultimate Guide: PV Combiner Boxes, Isolators, Disconnects](#)

4 days ago · This piece focuses on PV Combiner Boxes, Solar Isolators, and DC Disconnects. You will see how each device works, where it fits, and how to select ratings that align with ...

[Product Information](#)



How to Connect the Current of Photovoltaic Combiner Box: A ...

The secret often lies in properly connecting the photovoltaic combiner box current. Think of it as the backstage manager of your solar power concert - mess this up, and your entire show could ...

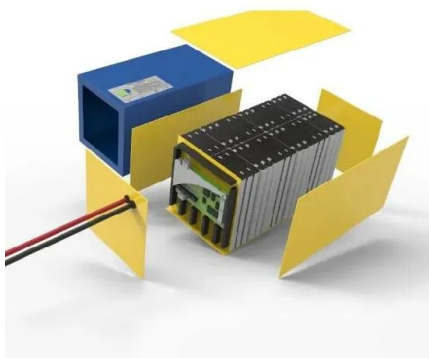
[Product Information](#)



[Routine Maintenance Tips for Photovoltaic Combiner Boxes](#)

In contemporary solar power systems, the Photovoltaic (PV) combiner box is a critical component. Its main function is to consolidate the output current from multiple solar panels and deliver it ...

[Product Information](#)





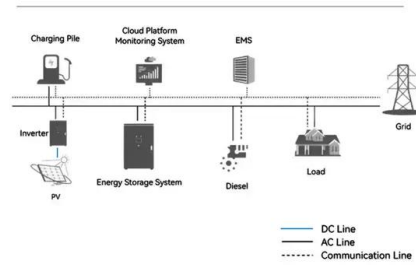
Electrical Parameters to Consider When Designing a Combiner Box

The rated current of the combiner box reflects the maximum current it can safely transmit. The design must consider the current generated by the PV strings and ensure that the internal ...

[Product Information](#)



System Topology



[How to determine the current in photovoltaic combiner box](#)

Basic Photovoltaic (PV) Module Testing The best, quickest, and easiest way to test a solar module is to check both the open circuit voltage (Voc) and short circuit current (Isc).

[Product Information](#)

Contact Us

For catalog requests, pricing, or partnerships, please visit:
<https://les-jardins-de-wasquehal.fr>