

# Can a single 12v lithium battery pack be connected in series



✓ IP65/IP55 OUTDOOR CABINET

✓ OUTDOOR MODULE CABINET

✓ OUTDOOR ENERGY STORAGE CABINET

✓ 19 INCH



## Overview

---

Yes, you can connect 12V lithium batteries in series to increase the overall voltage of your battery bank. This configuration allows you to create a higher voltage system, which is often necessary for various applications such as solar power systems, electric vehicles, and more. How many lithium batteries can be connected in series?

For instance, LiTime allows for a maximum of four 12V lithium batteries to be connected in series, resulting in a 48-volt system. It's always important to consult the battery manufacturer to ensure that you stay within their recommended limits for series connections.

Why are lithium batteries connected in series?

Lithium batteries are connected in series when the goal is to increase the nominal voltage rating of one individual lithium battery - by connecting it in series strings with at least one more of the same type and specification - to meet the nominal operating voltage of the system the batteries are being installed to support.

Can lithium-ion batteries be connected in parallel or in series?

Connecting lithium-ion batteries in parallel or in series is not as straightforward as a simple series-parallel connection of circuits. To ensure the safety of both the batteries and the individual handling them, several important factors should be taken into consideration.

What is the difference between LiFePO4 and 12V batteries?

For instance, if four 12V batteries are connected in series, the output voltage of the battery pack will be 48V. In contrast, parallel connection of LiFePO4 batteries increases the overall capacity of the battery pack, but the voltage output remains the same as that of an individual cell or battery.

Can a group of batteries be connected at the same time?



There are many ways to connect a group of batteries in both series and parallel at the same time. This is common practice in many battery power appliances, particularly in electric vehicles and large UPS systems where the battery packs require large voltages and amp-hour capacities.

Should you mix lithium ion batteries?

Consistent battery performance is essential, and mixing lithium-ion batteries of different brands, capacities, or types should be avoided. Always pay attention to battery polarity to prevent voltage drops or hazards. To effectively expand your battery bank, prompt action is crucial.



## Can a single 12v lithium battery pack be connected in series



### [Batteries in Series vs Parallel: Which is Better?](#)

If you connect two 12v 50ah batteries in parallel, it will still be a 12 volt system, but the amps will double to 100ah, so the batteries will last longer. On the other ...

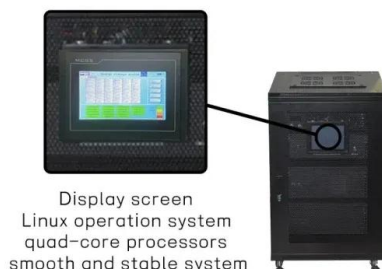
### [Product Information](#)

### Can You Link Battery Packs? Understanding Series Vs. Parallel

Yes, you can link battery packs together. However, it is important to consider how you connect them to avoid potential issues. Connecting battery packs in series increases the ...

### [Product Information](#)

#### Support Customized Product



### [Can lithium battery cells be connected in series?](#)

First off, yes, lithium battery cells can absolutely be connected in series. Connecting battery cells in series means you're linking the positive terminal of one cell to the negative ...

### [Product Information](#)

### [Can I connect BMS in parallel or series?](#)

A bank is considered to be a group of 1 or more batteries. Four batteries wired in parallel into a (single) battery bank would be capable of four times the Ah rating of each ...

### [Product Information](#)



### [Batteries and Chargers Connected in Series and Parallel](#)

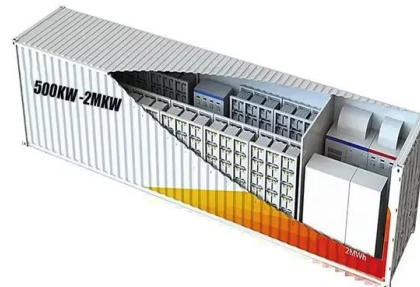
Learn how to connect batteries in series and parallel for different voltage and amp-hour capacities. Battery Tender® offers detailed instructions and diagrams for safely charging and configuring ...

[Product Information](#)

### [Complete Guide to Wiring Batteries in Series - PowMr](#)

3 days ago · How to wire 12V batteries in series? This guide explains voltage, amp-hours, precautions, pros& cons, and steps for reliable series battery connections.

[Product Information](#)



### [Ultimate Guide of LiFePO4 Lithium Batteries in Series ...](#)

Unlock the ultimate guide to using LiFePO4 lithium batteries in series and parallel. Learn configurations, benefits, and tips for optimal performance!

[Product Information](#)



- ☒ IP65/IP55 OUTDOOR CABINET
- ☒ OUTDOOR CABINET WITH AIR CONDITIONER
- ☒ OUTDOOR ENERGY STORAGE CABINET
- ☒ 19 INCH



### [Lithium Series, Parallel and Series and Parallel](#)

Connecting multiple lithium batteries into a string of batteries allows us to build a battery bank with the potential to operate at an increased voltage, or with increased capacity and runtime, or both.

#### [Product Information](#)



### [LiFePO4 Lithium Batteries in Series VS Parallel Connection](#)

It's essential to always consult the battery manufacturer to ensure adherence to their recommended limits for series connections. On the contrary, there is no strict limitation on ...

#### [Product Information](#)



### [Charging LiFePO4 Batteries In Parallel And Series Guide](#)

Like other types of battery cells, LiFePO4 (Lithium Iron Phosphate) cells are often connected in parallel and series configurations to meet specific ...

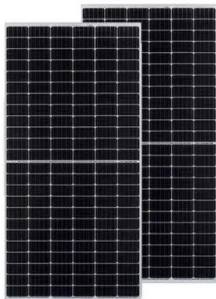
#### [Product Information](#)



### [How To Wire Lithium Batteries In Parallel Increase ...](#)

In this article, we will explain why you would want to wire lithium-ion batteries in parallel, how you wire them in series and how to charge battery ...

#### [Product Information](#)





## Connecting Batteries in Series

The video has practical advice, distilled into three rules for connecting batteries in series to avoid common pitfalls, such as mixing different capacities or chemistries, and the

[Product Information](#)



[12V Lithium Ion Battery Guide, 12V Li Ion Battery ...](#)

12V lithium battery is a lithium battery pack composed of 3 or 4 lithium batteries in series. The capacity of the battery is determined by the capacity of the single ...

[Product Information](#)



[Can I connect 12V lithium batteries in series?](#)

Yes, you can connect 12V lithium batteries in series to increase the overall voltage of your battery bank. This configuration allows you to create a higher voltage system, which is ...

[Product Information](#)



[Can a lithium battery pack be used in series?](#)

Can a lithium battery pack be used in series? That's a question I get asked a lot as a lithium battery pack supplier. So, let's dive right into it and break down the ins and outs of using ...

[Product Information](#)







## Ultimate Guide of LiFePO4 Lithium Batteries in Series & Parallel

Unlock the ultimate guide to using LiFePO4 lithium batteries in series and parallel. Learn configurations, benefits, and tips for optimal performance!

[Product Information](#)



### [Two 12V vs. One 24V Lithium Battery. Which One is Better?](#)

The most common current ratings of 12V Lithium batteries is 100Ah or 200Ah, with some going up to 300Ah. The Ah stands for (Ampere Hours) in full, and shows the total ...

[Product Information](#)

## Contact Us

---

For catalog requests, pricing, or partnerships, please visit:  
<https://les-jardins-de-wasquehal.fr>