

Can a 72v inverter last for an hour





Overview

Our batteries store power in DC (Current current) but most of our household appliances require AC (Alternating current) Our batteries come in different voltages (12,24, & 48v) But AC appliances required 120 volts (because our grid power comes in 120 volts). So an.

There are a few points to keep in mind before getting into calculation stuff, Which are the basics and you need to know.

The next question which comes to mind that how long my inverter will last on load with a 12, 24, or 48v battery. To understand this first of all we need to know 1. What size battery is connected 2. Its type 3. total output load in watts

A rule of thumb is that the total output load should be less than the inverter capacity. For example,if you have a 3000-watt inverter you can run up to 2500 watts of output load with it. As I have mentioned earlier you have to keep in mind the efficiency rate of your.

To calculate how long will an inverter last on a battery using this formula
Battery capacity in watts - 15% (for 85 efficient inverters) / Output total load =
Battery backup time on inverter let's assume that you have a 12v 100Ah lithium battery connected with a.

An inverter battery typically lasts 5 to 10 hours when fully charged. The backup time varies based on power consumption, total load power, and battery capacity. For optimal duration, ensure that your battery is well-maintained and used efficiently.How long does a 24V inverter last?

An inverter draws its power from the battery so the battery capacity and power load determines how long the inverter will last. Regardless of the size, the calculation steps are always the same. Using this calculation, a 24V inverter with a 100ah battery and 93% efficiency can run a 500W load for 2.3 hours.

What is inverter run time?

Inverter run time refers to the duration for which an inverter can supply power



to a load using the stored energy in a battery. This is a crucial parameter for determining how long your backup power system will last during a power outage. The run time depends on the battery capacity and the power consumption of the connected load.

Does an inverter use time?

Inverter Usage Time Calculator - Yes! Calculator Understanding how long your inverter will last is essential for efficient energy management and backup power planning. This guide explores the science behind inverter usage time, providing practical formulas and expert tips to help you maximize your system's performance.

How long can an inverter supply power?

The duration it can supply power depends on three key factors: Battery Capacity (Ah): The amount of energy stored in the battery. Inverter Efficiency (%): How effectively the inverter converts DC to AC power. Load Power (W): The total wattage consumed by connected devices. This knowledge is crucial for:.

How long can a 24V inverter run a 500W load?

Using this calculation, a 24V inverter with a 100ah battery and 93% efficiency can run a 500W load for 2.3 hours. You have a 24V inverter with a 150ah deep cycle battery. The inverter is 93% efficient. You want to run a 700 watt load, so how long can the inverter run this?

The inverter can run a 700 watt load for 2.4 hours.

How do you calculate inverter usage time?

To calculate the usage time of an inverter, multiply the battery capacity by 12 (to convert Ah to Wh assuming a 12V battery), then multiply by the inverter efficiency, and finally divide by the load power. What is Inverter Usage Time?

Inverter usage time refers to the duration an inverter can supply power to a load before the battery is depleted.



Can a 72v inverter last for an hour



What Is A 72 Volt Battery And How Long Does It Usually Last?

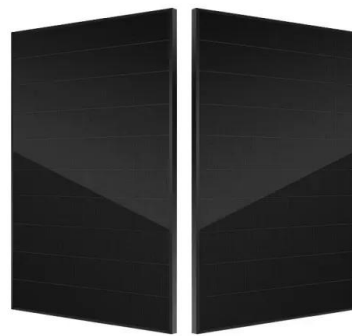
A 72-volt battery is a high-voltage energy storage system commonly used in electric motorcycles, golf carts, and industrial equipment. Its lifespan depends on capacity ...

[Product Information](#)

[Inverter Runtime: Can It Run 24/7? Discover the Truth! -- ...](#)

As long as the inverter has a sufficient power supply and is not overloaded, it can operate continuously without any issues. However, it's essential to consider the inverter's ...

[Product Information](#)



Inverter Usage Calculator

Enter the battery capacity, inverter efficiency, and load power into the calculator to determine the usage time of an inverter. This calculator helps to estimate how long an inverter ...

[Product Information](#)

[Battery Runtime Calculator , How Long Can A Battery Last](#)

However, Lithium-Ion batteries charge the fastest - some can reach 80% capacity in just 1-2 hours - perfect for applications where quick turnaround is essential, like electric ...



[Product Information](#)



Inverter Battery: How Many Hours Does It Last During Power ...

An inverter battery typically lasts 5 to 10 hours when fully charged. The backup time varies based on power consumption, total load power, and battery capacity. For optimal ...

[Product Information](#)



[How Long Does A 24 volt Battery Last? \(incl. Calculator\)](#)

To calculate how long your 24v battery will last on an inverter, use our previously mentioned calculator. Select "YES" for "Load Connected ...

[Product Information](#)



[How Long Can I Run The Power Inverter On My Battery?](#)

How long can a battery-powered inverter last? This article will explore this issue in depth, revealing how to scientifically match the power of the equipment, optimize load ...

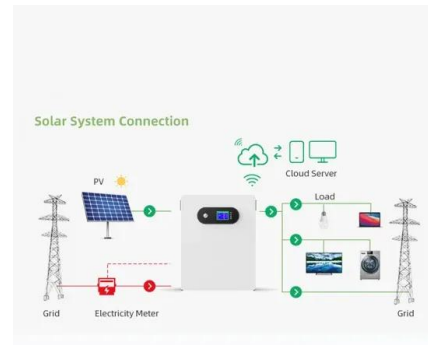
[Product Information](#)



What Will a 1200W Inverter Run?

If the inverter is running a full load it will last for an hour, give or take a few minutes. If the load is 600 watts, the runtime is approximately two hours. Inverter size / running load = runtime So if ...

[Product Information](#)



[1500 Watt Inverter: Battery Sizing Guide](#)

How many batteries do I need for a 1500-watt inverter? In short, For 1500 watt inverter you'll need two 12V 100Ah lead-acid batteries connected in series or a single 24V ...

[Product Information](#)

How Long Will My Inverter System Last in a Day? Here's What ...

One of the most frequently asked questions we get from both homeowners and business owners alike is: "How many hours will my inverter system last in a day?" And while ...

[Product Information](#)



[What Will An Inverter Run & For How Long? \(With Calculator\)](#)

So I'm gonna explain to you guys in simple words about what you can run on your any size inverter and what are the key point to keep in mind. And also how long your inverter ...

[Product Information](#)

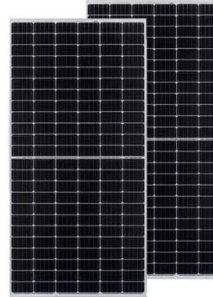




[eBike lithium batteries can hold an insane amount of ...](#)

Or keep your fridge running for hours. My entertainment system only uses a couple hundred watts, I could probably run it for hours. For reference I've used ...

[Product Information](#)



Contact Us

For catalog requests, pricing, or partnerships, please visit:
<https://les-jardins-de-wasquehal.fr>