

# **Can a 12v inverter be connected to a 36v**





## Overview

---

Can I use a 12V inverter with a 36V power system?

No, the inverter must match the system voltage. Use a 36V inverter. How long will my system run?

Depends on total Ah.



## Can a 12v inverter be connected to a 36v

---



### [Best way to charge 12v battery. 36v 12v MPPT](#)

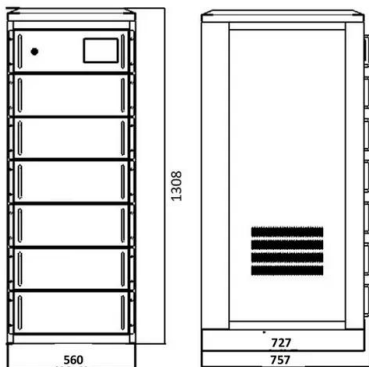
Charging with too high voltage is really hard on the battery, and would likely damage a controller not intended for it. You need an mppt type controller with those panels. A 12v nominal panel ...

### [Product Information](#)

## 12V vs 24V Inverters Key Differences and Which One is Right for ...

A 12V inverter is typically more suitable for smaller setups, while a 24V inverter offers enhanced efficiency and is ideal for larger applications.

### [Product Information](#)



## matching a 300w 36v solar panel to my 12v battery and 12/24v ...

Hello chacha and welcome to Solar Panel Talk! If your charge controller (CC) is the Pulse Width Modulated (PWM) type, then you can go ahead and use it safely but you will ...

### [Product Information](#)

## [The Best 36 Volt Power Inverters , SolarKnowHow](#)

Your inverter should match the DC voltage of your battery or solar system--e.g., 36 V input for a 36 V battery bank. Mismatches can cause poor performance or damage. Try to operate your ...

### [Product Information](#)



### [How to charge my 36v 15ah SLA battery from the car?](#)

I can only assume you have a 36V charger that needs to plug in to 110VAC to operate and charge your 36VDC battery. The 12V inverter needs to output the watts required ...

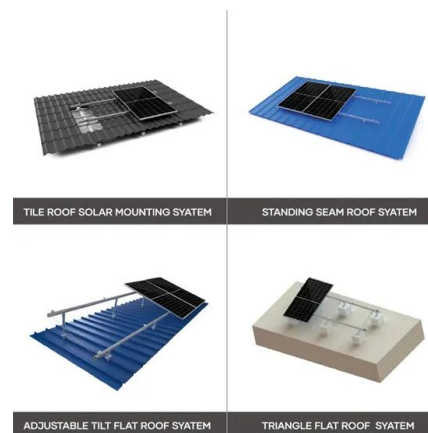
### [Product Information](#)



### **Stocked 12V to 36V DC/DC converter 150 Watts continuous from ...**

The PST-DC1236-5 DC/DC Converter can be used to provide regulated 36V from 12V or 24V sealed lead acid batteries--excellent for special purpose UPS DC battery backups.

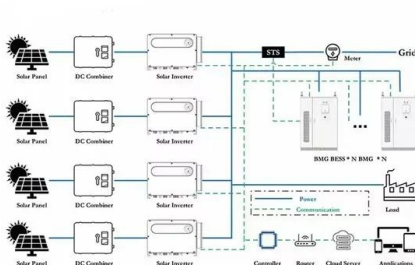
### [Product Information](#)



### **matching a 300w 36v solar panel to my 12v battery and 12/24v inverter**

Hello chacha and welcome to Solar Panel Talk! If your charge controller (CC) is the Pulse Width Modulated (PWM) type, then you can go ahead and use it safely but you will ...

### [Product Information](#)





## 12V, 24V, or 48V Solar Power System: Which Voltage Is Best for ...

To do this, you need to connect an inverter to the battery bank. It is important to match the battery bank voltage with an inverter that can handle that same voltage. Simply put, if you have a 12V ...

[Product Information](#)



## Holdwell DC-DC Converter 12V to 36V 5A 180W Step Up Booster ...

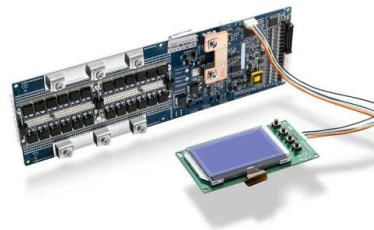
Industry grade DC 12V to 36V step-up converter auto protect over voltage, over current, over temperature, short circuit,,can work in normal condition when restored. 100% waterproof & anti-shock protection Ultra compact size, light weight Auto-recovery when device is back to ...

[Product Information](#)

## [Wiring Six 12V Batteries to Build a 36V Power System](#)

A 36V power system created by wiring six 12V batteries in series is a smart and scalable solution for many medium-power applications. Whether you're powering a solar ...

[Product Information](#)



## [36V to 12V then inverter to 220-240V AC : r/OffTheGrid](#)

I am salvaging scooter batteries that are 36V but 36V to 220V inverters are not as readily available so is it possible to Have a 36V battery pack use a transformer to output 12V then use ...

[Product Information](#)





### [36v Solar Panel to 12v Battery : r/SolarDIY](#)

As for an inverter (if you need one, to run AC loads) just get a decent pure sine wave inverter that works with your battery voltage. (So, in your case, a 12 Volt input pure sine wave inverter.)

#### [Product Information](#)



### **36 to 12 Volt o DWE**

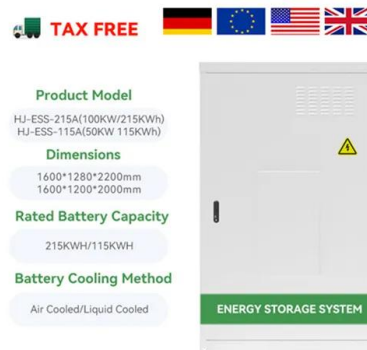
A 36V to 12V DC/DC converter, also known as an inverter, converts the input DC voltage to a 36V stabilised DC voltage. DWE supplies DC/DC converters with various input voltages over a ...

#### [Product Information](#)

### [Complete Guide to Wiring Batteries in Series - PowMr](#)

3 days ago· Wiring batteries in series is a common method used in solar power systems, RVs, golf carts, and other DC setups. 12V batteries are the most popular, offering flexibility for ...

#### [Product Information](#)



### **36 volt solar to 12 volt battery -- northernarizona-windandsun**

Short Circuit Current: 3850A Max Discharge Current: 1500A (5s) Internal Resistance: 3.1 mOhms Recommended Charging Options: AC Chargers: Any Quality Brand AGM- Smart & ...

#### [Product Information](#)



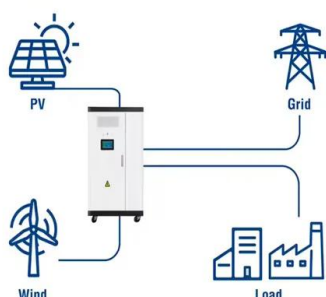
## [The Best 36 Volt Power Inverters , SolarKnowHow](#)

Your inverter should match the DC voltage of your battery or solar system--e.g., 36 V input for a 36 V battery bank. Mismatches can cause poor performance ...

### [Product Information](#)



## Utility-Scale ESS solutions



## Step-by-Step Guide: How to Safely Wire 12V LiFePO4 Batteries ...

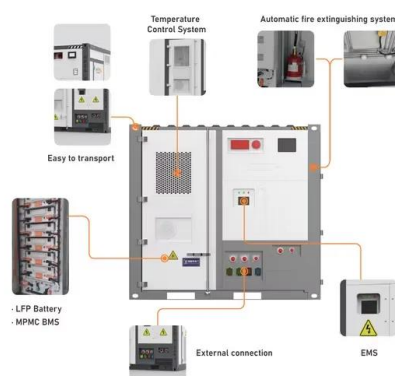
Upgrading your power system to 24V or 36V doesn't require buying new equipment. By wiring 12V LiFePO4 batteries in series, you can achieve higher voltage for ...

### [Product Information](#)

## Inverter advice sought. 12 and 36 volt pure sine wave models.

He needs 12v because he wants to connect it to the 12v system on the Bolt, which is powered by the onboard DC-DC converter, taking HV power from the big battery and ...

### [Product Information](#)



## Contact Us

For catalog requests, pricing, or partnerships, please visit:  
<https://les-jardins-de-wasquehal.fr>