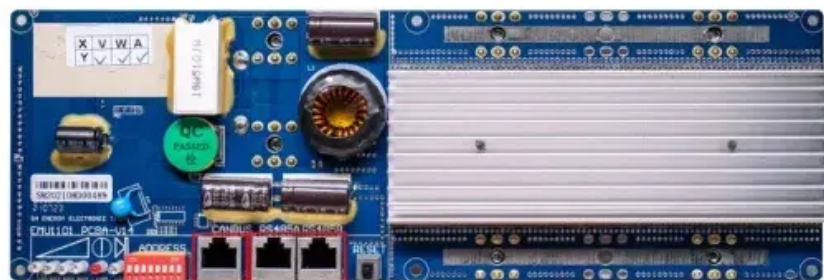


Base station battery load



RS485
Communication between battery and inverters
Baud rate:9600bps

RS485 Interface
Communication between parallel packs or BMS and PC
Baud rate:9600bps





Overview

Why do communication base stations use battery energy storage?

Meanwhile, communication base stations often configure battery energy storage as a backup power source to maintain the normal operation of communication equipment [3, 4]. Given the rapid proliferation of 5G base stations in recent years, the significance of communication energy storage has grown exponentially [5, 6].

What is a base station energy storage system?

A single base station energy storage system is configured with a set of 48 V/400 A-h energy storage batteries. The initial charge state of the batteries is assumed to obey a normal distribution, assuming that the base station has a uniform specification and its parameters are shown in Table 2. Table 2. Parameters of the energy storage system.

How do I choose a base station?

Key Factors: Power Consumption: Determine the base station's load (in watts). Backup Duration: Identify the required backup time (hours). Battery Voltage: Select the correct voltage based on system design. Efficiency & Discharge Rate: Consider battery efficiency and discharge characteristics.

Can a virtual battery model be used for a base station?

Grounded in the spatiotemporal traits of chemical energy storage and thermal energy storage, a virtual battery model for base stations is established and the scheduling potential of battery clusters in multiple scenarios is explored.

How does a virtual battery control a base station?

By regulating the charging and discharging behavior of the virtual battery of the base station in such a way that the base station avoids the peak period of power consumption and staggered power preparation, it is able to optimize the regional demand for electricity.



How does a base station work?

In the working state of the signal, this type of base station transmits a positive hexagonal region for a base station radiation area. The scope of a single radiation area is divided to achieve the scope of the sub-control area of the range of the increase, that is, to complete a small range of user clustering.



Base station battery load



[Base Power Battery Specifications . Compare Models](#)

Compare Base Power's home battery systems - from our streamlined 20kWh wall-mount to our advanced 50kWh ground-mount solution. View complete technical specifications.

[Product Information](#)

[What Size Battery for Base Station? . Huijue Group E-Site](#)

New EU Ecodesign mandates effective 2024 require base station batteries to have 90% recyclability. This shifts the calculus toward lithium-based solutions despite higher upfront costs.

[Product Information](#)



[Battery technology for communication base stations](#)

In order to ensure the reliability of communication, 5G base stations are usually equipped with lithium iron phosphate cascade batteries with high energy density and high charge and ...

[Product Information](#)



[What are base station energy storage batteries used for?](#)

Innovations in battery technologies, such as lithium-sulfur or solid-state batteries, promise higher energy densities and improved lifespan, thereby enhancing the operational ...



[Product Information](#)



An optimal dispatch strategy for 5G base stations equipped with battery

The escalating deployment of 5G base stations (BSs) and self-service battery swapping cabinets (BSCs) in urban distribution networks has raised concern...

[Product Information](#)



Optimized Power System Planning for Base Transceiver Station ...

PDF , On Nov 1, 2019, Huzaifa Rauf and others published Optimized Power System Planning for Base Transceiver Station (BTS) based on Minimized Power Consumption and Cost , Find, ...

[Product Information](#)



Backup Battery Analysis and Allocation against Power Outage for

Base stations have been widely deployed to satisfy the service coverage and explosive demand increase in today's cellular networks. Their reliability and availability heavily ...

[Product Information](#)

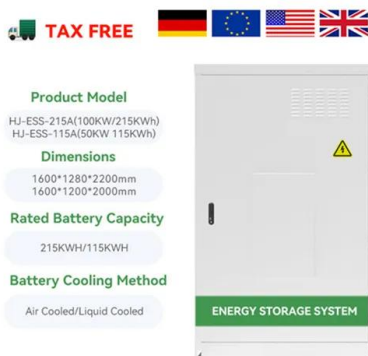




[Load profile of the BTS site under investigation](#) [Power ...](#)

The high cost of power supply and the environmental emission of gases from base stations are also addressed by integrating a renewable energy resource ...

[Product Information](#)



[Optimal configuration of 5G base station energy storage](#)

Abstract: The high-energy consumption and high construction density of 5G base stations have greatly increased the demand for backup energy storage batteries. To maximize overall ...

[Product Information](#)

[Hybrid Control Strategy for 5G Base Station](#) [Virtual Battery](#)

The analysis results demonstrate that the proposed model can effectively reduce the power consumption of base stations while mitigating the fluctuation of the power grid load.

[Product Information](#)



[How do I use a battery to store power? : r/Stationeers](#)

I have 80 hours in, and I'm trying to figure out how do use a kit battery, like how do I hook it up to store power, I can't grow food, all of it died, and I need some major advice. If you want more ...

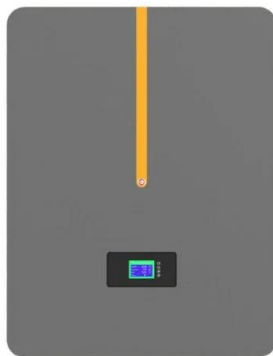
[Product Information](#)



Strategy of 5G Base Station Energy Storage Participating in the ...

The proportion of traditional frequency regulation units decreases as renewable energy increases, posing new challenges to the frequency stability of the power system. The ...

[Product Information](#)



[Optimization of Communication Base Station Battery ...](#)

In the communication power supply field, base station interruptions may occur due to sudden natural disasters or unstable power supplies. This work studies the optimization of ...

[Product Information](#)

[Optimum sizing and configuration of electrical system for](#)

This study develops a mathematical model and investigates an optimization approach for optimal sizing and deployment of solar photovoltaic (PV), battery bank storage ...

[Product Information](#)



Multi-objective cooperative optimization of communication base station

Recently, 5G communication base stations have steadily evolved into a key developing load in the distribution network. During the operation process, scientific dispatching ...

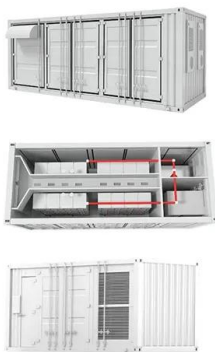
[Product Information](#)



Example: If a base station consumes 500W and needs 4 hours of backup at 48V, the required capacity is: $500W \times 4h / 48V = 41.67Ah$ Choosing a battery with a slightly higher ...



Customizable pattern color

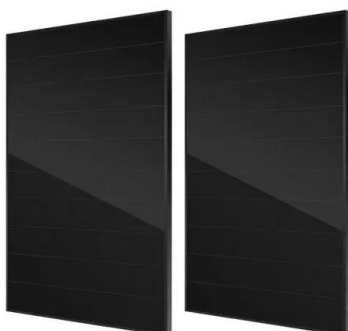


Background Unattended base stations require an intelligent cooling system because of the strain they are exposed to. The sensitive telecom equipment is operating 24/7 with continuous load ...

Urban base stations generally require shorter backup times, around 1-3 hours, to sustain operations during outages. In stark contrast, rural stations may necessitate more ...

This image displays a variety of electronic products arranged around a central circular graphic. The products are categorized into eight groups, each with a label in a blue box:

- Medical instruments:** A handheld medical device, possibly a pulse oximeter or a small ultrasound probe.
- Model power:** A white, boxy electronic device, possibly a power supply or a model component.
- Electric traffic:** A small, white, toy-like vehicle or model.
- Battery:** A collection of small, cylindrical batteries arranged in a grid.
- Electrical tools:** A green and black power drill.
- Flashlight:** A black, cylindrical flashlight.
- Model airplane video game:** A small, white, toy-like airplane.
- Battery pack:** A black, rectangular battery pack with a blue label.



Cellular base stations (BSs) are equipped with backup batteries to obtain the uninterruptible power supply (UPS) and maintain the power supply reliability. While ...

Powered by SolarMicrogrid Solutions



What Are the Critical Aspects of Telecom Base Station Backup ...

Backup batteries must supply sufficient energy to maintain base station operations during power outages. Higher capacity (measured in ampere-hours) and energy density ...

[Product Information](#)



How to Determine the Right Battery Capacity for Telecom Base Stations

Example: If a base station consumes 500W and needs 4 hours of backup at 48V, the required capacity is: $500W \times 4h / 48V = 41.67Ah$ Choosing a battery with a slightly higher ...

[Product Information](#)

Contact Us

For catalog requests, pricing, or partnerships, please visit:
<https://les-jardins-de-wasquehal.fr>