

BMS battery external voltage is low





Overview

Does BMS output match battery pack output?

However, when I measure the voltage across the BMS P- cable and the Battery Pack's positive terminal, I am only getting 47V even though the pack measures 58V. I read that the BMS output is supposed to match the pack output, but can't think of anything I did wrong.

How does a BMS monitor a battery pack?

Detection of imbalance: The BMS continuously monitors the voltage of each cell or module in the battery pack. When the voltage of some cells is significantly higher than that of others, or the voltage difference exceeds a preset threshold, the BMS determines that the battery pack is unbalanced.

How does BMS balance a battery cell?

Balancing operation: After deciding to balance the voltage, BMS will discharge the battery cell with a higher voltage or charge the cell with a lower voltage through the charge and discharge controller. This helps reduce voltage differences between battery cells.

What is a BMS low voltage range?

Low voltage range: The input voltage of the low voltage range is generally between 1V and 12V, which is suitable for mobile devices, sensors, handheld tools, and other small devices. These applications usually require a certain volume and weight of the battery and need to operate in a BMS low voltage range, while requiring a long service life.

What is a battery management system (BMS)?

The BMS acts as a safeguard by monitoring voltage levels, temperature fluctuations, and other critical parameters to prevent any potential hazards. Optimal performance is key when it comes to battery-powered systems. A well-functioning BMS helps maintain balanced cell voltages and protects against



over-discharge.

How do you test a battery management system (BMS)?

Another important step in testing the BMS is monitoring battery voltage and temperature. A healthy battery should maintain a stable voltage within a specified range, while abnormal temperature readings could signal an overheating issue.



BMS battery external voltage is low



[Battery Monitor vs Battery Management System: Key Insights](#)

3 days ago · Part 2. What is a battery management system (BMS)? A battery management system is an electronic system that protects and controls a battery pack. It ensures safe ...

[Product Information](#)

[A Beginner's Guide to Battery Management System](#)

Below is a simple introduction to common terms related to Battery Management Systems (BMS), designed to help beginners understand the basics. This guide covers "1S," ...



[Product Information](#)



Understanding the Protections Provided by a Battery Management System (BMS)

A Battery Management System (BMS) monitors cell voltage, temperature, and state of charge while providing protections against overcharging, over-discharging, short ...

[Product Information](#)

[Help!! The output voltage of my bms is lower than the ...](#)

Apply a load to the output terminals and measure again. If you measure 0 V, then it means that the BMS has turned off the battery. If you measure the same ...



[Product Information](#)



[BU-908: Battery Management System \(BMS\)](#)

Capacity is the primary indicator of battery state-of-health (SoH) and should be part of the battery management system (BMS). Knowing SoC and SoH provides state-of-function ...

[Product Information](#)



6. Troubleshooting & support

The battery has a cell imbalance, causing premature low-voltage alarms, which in turn causes the BMS to turn loads off. Please refer to section How to recover an imbalanced battery.

[Product Information](#)



SOLVED: Is it Normal For BMS Voltage Reads Less Than Battery ...

There was no smoke or anything when I plugged everything in, but the output voltage doesn't seem right. The top picture shows the output voltage of BMS, and the bottom shows the ...

[Product Information](#)





How to Detect and Keep Types of BMS Voltage for Your Battery ...

The innovative battery voltage state detection method in the BMS system provided by MOKOEnergy can not only conveniently monitor whether there is abnormal battery voltage, ...

[Product Information](#)



[3. System design and BMS selection guide](#)

In the event of a high cell voltage or high/low battery temperature, the VE.Bus BMS V2 will send a "charge disconnect" signal to turn the charger (s) off and it will also disable the charger of the ...

[Product Information](#)

[How Do I Know If My BMS Is Bad? 8 Warning Signs Explained](#)

A failing Battery Management System (BMS) manifests through voltage irregularities, communication failures, overheating batteries, and inconsistent charging. ...

[Product Information](#)



[How To Test If BMS Is Working? Ensuring BMS Functionality](#)

The battery voltage can provide valuable information about the state of charge, while temperature readings can indicate any potential issues or abnormalities. To monitor the battery voltage, ...

[Product Information](#)



[Battery not charging BMS voltage lower than battery total](#)

Currently the cell banks are around 4v each. The charge port measures 24.2 so will not start charging. Should the voltage after going through the BMS equal the total battery ...

[Product Information](#)



JK BMS not allowing charging when recovered from low voltage.

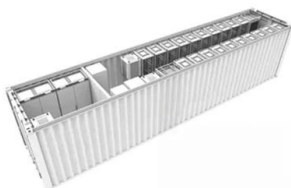
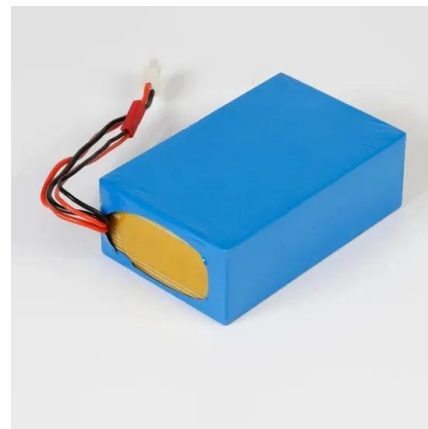
When you hit low cut-off, the battery stops delivering voltage/current. The MPPT needs power from the battery to operate. It's not that the BMS is not allowing charge it's that ...

[Product Information](#)

Help!! The output voltage of my bms is lower than the voltage of ...

Apply a load to the output terminals and measure again. If you measure 0 V, then it means that the BMS has turned off the battery. If you measure the same voltage, it means that ...

[Product Information](#)



[How Do I Know if My BMS is Bad? A Comprehensive Guide](#)

Some of the signs of a bad BMS include irregular battery readings, the inability to charge the battery fully, or the battery discharging more quickly than usual. If you observe any of these ...

[Product Information](#)



June 2013 Report.pdf

The BMS takes this measurement inside the battery contactors, which is why the values observed on the TDS will be different depending on the contactor state. This can be used to determine ...

[Product Information](#)



[Power Battery \(CELL/BMS/PACK\) Failure Mode](#)

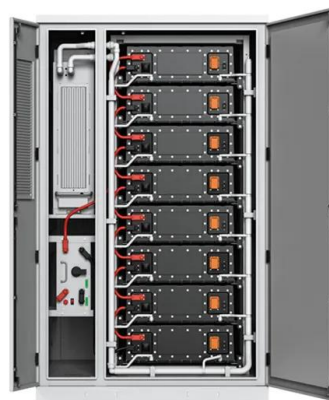
2. The main circuit connector of the power battery system fails: The high-voltage line of the power battery system is connected to the external high-voltage system through a connector. The ...

[Product Information](#)

[SOLVED: Is it Normal For BMS Voltage Reads Less...](#)

There was no smoke or anything when I plugged everything in, but the output voltage doesn't seem right. The top picture shows the output voltage of BMS, ...

[Product Information](#)



Contact Us

For catalog requests, pricing, or partnerships, please visit:
<https://les-jardins-de-wasquehal.fr>