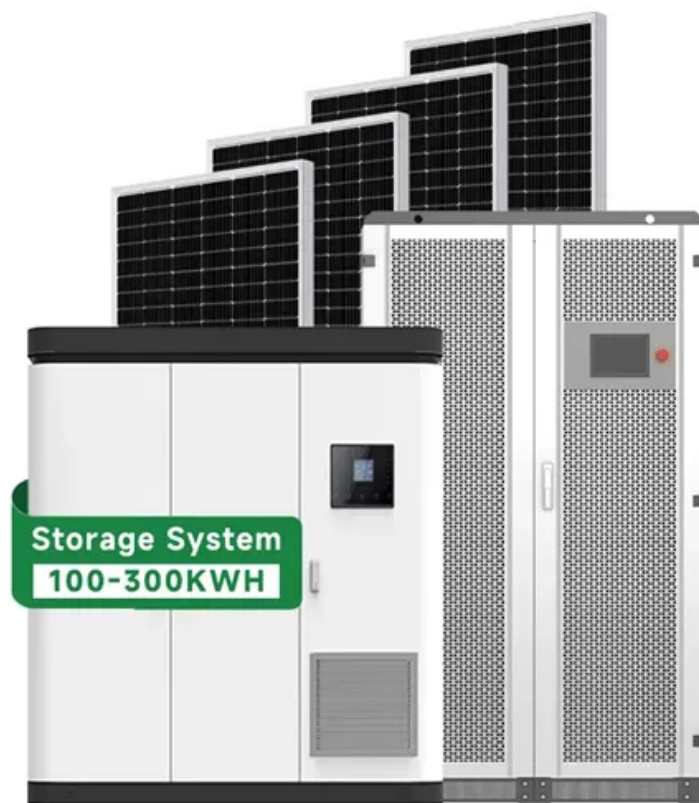


12V lithium battery pack series and parallel connection





Overview

Connecting multiple lithium batteries into a string of batteries allows us to build a battery bank with the potential to operate at an increased voltage, or with increased capacity and runtime, or both.

Lithium battery banks using batteries with built-in Battery Management Systems (BMS) are created by connecting two or more batteries together to support a.

The primary function of a BMS is to ensure that each cell in the battery remains within its safe operating limits, and to take appropriate action to prevent the.

The primary purpose of a BMS is to interrupt the charge and discharge process if cell and battery voltage, cell and battery current and cell and BMS temperatures.

Lithium batteries are connected in series when the goal is to increase the nominal voltage rating of one individual lithium battery - by connecting it in series strings.

Connecting battery packs in series increases the total voltage while maintaining the same capacity. This configuration can be useful when higher voltage is needed. Conversely, connecting them in parallel maintains the voltage but increases the total capacity, providing longer usage time.



12V lithium battery pack series and parallel connection



[How to Wire 12V Batteries in Series & Parallel \(w/ Photos!\)](#)

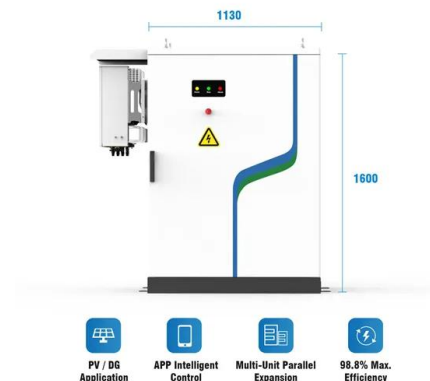
Wiring batteries in series sums their voltages and keeps their amp hours the same. It's particularly useful for wiring two 6V lead acid batteries, or four 3.2V lithium cells, to make a ...

[Product Information](#)

[Battery Series vs Parallel Explained](#)

Best Batteries for Series and Parallel Configurations Renogy Deep Cycle AGM Battery 12V 100Ah Ideal for solar and RV setups, Renogy's sealed AGM battery excels in both ...

[Product Information](#)



Batteries in Series vs Parallel: A Detailed Comparison , EcoFlow PH

Understand the difference between batteries in series vs parallel, their pros and cons, and how to safely wire them for your solar, RV, or off-grid setup.

[Product Information](#)

3. Battery bank wiring

The maximum is at around 3 (or 4) paralleled strings. The reason for this is that with a large battery bank like this, it becomes tricky to create a balanced battery bank. In a large ...

[Product Information](#)



Ultimate Guide of LiFePO4 Lithium Batteries in Series & Parallel

Unlock the ultimate guide to using LiFePO4 lithium batteries in series and parallel. Learn configurations, benefits, and tips for optimal performance!

[Product Information](#)



[Batteries in Series vs Parallel: Which is Better?](#)

If you connect two 12v 50ah batteries in parallel, it will still be a 12 volt system, but the amps will double to 100ah, so the batteries will last longer. On the other hand, when you connect ...

[Product Information](#)



Lithium Series, Parallel and Series and Parallel Connections

Connecting multiple lithium batteries into a string of batteries allows us to build a battery bank with the potential to operate at an increased voltage, or with increased capacity and runtime, or both.

[Product Information](#)





[Lithium battery pack series and parallel connection diagram](#)

Series-parallel connection is required when you need to increase both the system voltage and amperage. A series-parallel system is a combination of both series and parallel connections, ...

[Product Information](#)



[LiFePO4 Lithium Batteries in Series VS Parallel Connection](#)

Series connections are ideal for high voltage output, while parallel connections are best for high capacity needs. Both configurations have their pros and cons but can enhance ...

[Product Information](#)



[Batteries and Chargers Connected in Series and Parallel](#)

Learn how to connect batteries in series and parallel for different voltage and amp-hour capacities. Battery Tender® offers detailed instructions and diagrams for safely charging and configuring ...

[Product Information](#)



[Lithium Battery Series & Parallel Operation . Fact Sheets](#)

Series / Parallel Operation and Fault Indication
Each EarthX battery requires its own remote fault indication LED. The 12V LED is connected across the battery's positive terminal and the ...

[Product Information](#)



Battery pack calculator : Capacity, C-rating, ampere, charge and

Battery calculator : calculation of battery pack capacity, c-rate, run-time, charge and discharge current Online free battery calculator for any kind of battery : lithium, Alkaline, LiPo, Li-ION, ...

[Product Information](#)



Analysis of lithium battery in series and parallel connections

In the development of modern technology, lithium batteries have become the primary power source for various electronic devices and electric motorcycles due to their high energy density ...

[Product Information](#)

How To Connect Batteries In Series and Parallel

If you have two sets of batteries connected in series, you can wire both sets into a parallel connection to make a series-parallel battery bank. In the images below we will walk ...

[Product Information](#)



Batteries in Parallel vs Series. All You Need to Know

Deciding between series and parallel battery wiring depends on your voltage and capacity needs. Series increases voltage while keeping capacity the same, and parallel ...

[Product Information](#)



[Wiring Batteries in Series vs. Parallel](#)

Understanding the difference between wiring batteries in series vs. parallel is critical if you have multiple batteries you want to connect together in a larger bank. It's something that ...

[Product Information](#)



[Lithium battery series and parallel, the difference](#)

The process of assembling lithium batteries into groups is called PACK, which can be a single battery or a lithium battery pack connected in series and parallel.

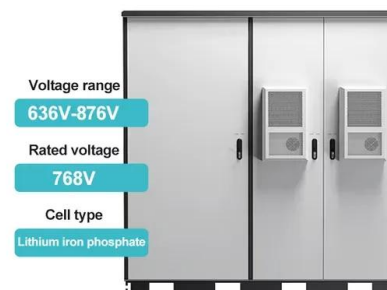
[Product Information](#)



[Batteries and Chargers Connected in Series and Parallel](#)

Learn how to connect batteries in series and parallel for different voltage and amp-hour capacities. Battery Tender® offers detailed instructions and ...

[Product Information](#)



Can You Link Battery Packs? Understanding Series Vs. Parallel

Connecting battery packs in series increases the total voltage while maintaining the same capacity. This configuration can be useful when higher voltage is needed. Conversely, ...

[Product Information](#)



HOW TO CONNECT BATTERIES IN SERIES AND PARALLEL

To configure batteries with a series connection each battery must have the same voltage and capacity rating, or you can potentially damage the batteries. For example you can connect two ...

[Product Information](#)



Batteries in Series vs Parallel: Which is Better?

If you connect two 12v 50ah batteries in parallel, it will still be a 12 volt system, but the amps will double to 100ah, so the batteries will last longer. On the other ...

[Product Information](#)

Contact Us

For catalog requests, pricing, or partnerships, please visit:
<https://les-jardins-de-wasquehal.fr>